

INCHLINE™

1" x 1 1/2" REMOTE BALLAST
T5 FLUORESCENT
ILF SERIES



- Miniature 1" x 1 1/2" profile.
- Uses premium T5 lamps.
- Electronic ballast in separate low profile wiring enclosure may be remote mounted up to 6 feet from InchLine luminaire.
- Optional linear prism lens protect lamp from physical damage and provides wipe-down cleaning.
- Choose rear-feed for when fixture fascia will be visible or universal end-feed for concealed applications.

Miniature profile, InchLine fluorescents can solve lighting needs under space restricted cabinets, shelving, millwork, retail displays and exhibits



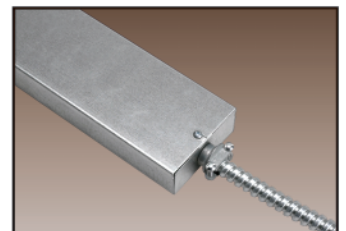
Rear feed



Optional linear prism lens



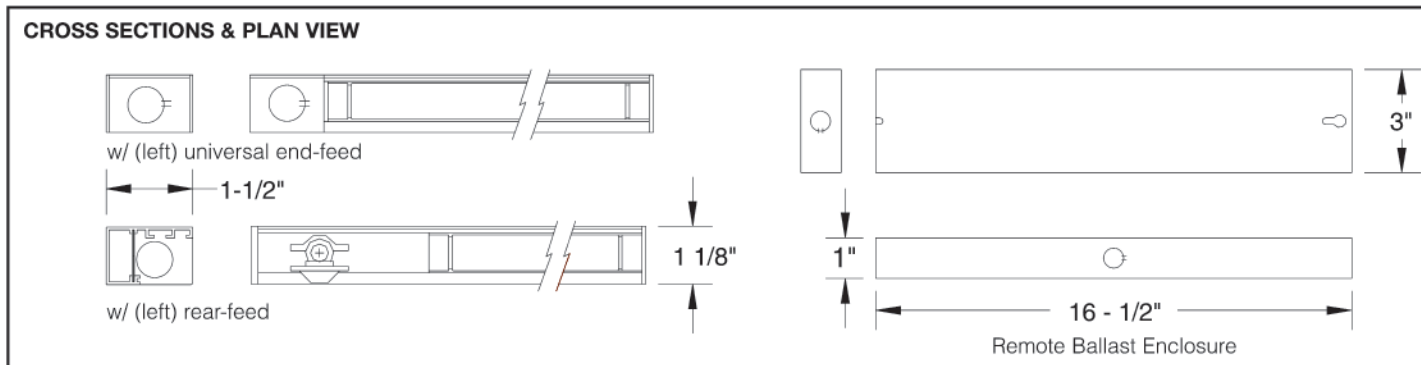
Universal feed



Remote ballast enclosure

INCHLINE™

**1" x 1 1/2" REMOTE BALLAST
T5 FLUORESCENT
ILF SERIES**



PHOTOMETRIC DATA

Cat #	Footcandles on Worksurface								
	A	B	C	D	E	F	G	H	I
ILF128	49	94	115	28	43	48	15	19	23
ILF128/DIF	41	79	99	23	36	47	14	19	22

SPECIFICATIONS

CONSTRUCTION

.060" extruded aluminum housing with injection molded polycarbonate end caps. Ballast enclosure constructed of 20 gauge galvanized CRS.

OPTIONAL DIFFUSER

Standard Incline luminaires are shipped without a diffuser. An optional clear linear prism lens may be specified to protect the lamp from physical damage and permit wipe-down cleaning. Extruded from Alkcrylic™DR acrylic and warranted to remain pliable and not to discolor.

FINISH

White polyester resin powder coat with minimum reflectivity of 87%. White end-caps.

ELECTRICAL/LAMPS

High frequency electronic rapid start ballast. 3000K tri-phosphor lamp included. 3500K or 4100K tri-phosphor lamp available in place of standard 3000K. 20,000 hour average life, 96-104 LPW.

INSTALLATION FEATURES

Luminaires are provided with 96" of 18 gauge secondary wire for connection to remote mounted ballast. Wires exit luminaire from right or left end as specified with either rear-feed or universal end-feed configuration as illustrated above. 1-lamp, or optional 2-lamp ballast in low profile enclosure is supplied for remote mounting up to 6 feet from luminaire (note: with 2-lamp ballast, individual secondary feeds are required to both Incline luminaires). UL recognized electrical fittings for 3/8" flexible metal conduit are provided for luminaire-to-ballast and supply-to-ballast connections (3/8" flexible metal conduit by others).

LABELS

UL, CUL & IBEW.

ORDERING INFORMATION

CAT#	LAMPS	LENGTH	
		w / Rear Feed	w / universal feed
ILF114	1/F14T5	25 15/16"	24 3/16"
ILF121	1/F21T5	37 5/8"	36"
ILF128	1/F28T5	49 7/16"	47 5/16"
ILF135	1/F35T5	61 1/4"	59 5/8"

ELECTRICAL FEED STYLE & LOCATION (add as suffix, location as you face lamp)

/LR	Left Rear Feed
/RR	Right Rear Feed
/LU	Left Universal Feed
/RU	Right Universal Feed

OPTIONAL EQUIPMENT (add as suffix)

/2	Two luminaires supplied with (1) two-lamp remote ballast (not available with 277V option)
/277	277 Volt
/DIF	Clear Linear Prism Lens

ELECTRICAL DATA

LAMP WATTAGE	14	21	28	35
Input Watts	17.2	26.1	34.8	40
Max. Amps	.16	.24	.32	.37
Power Factor	.98			
THD	<10%			