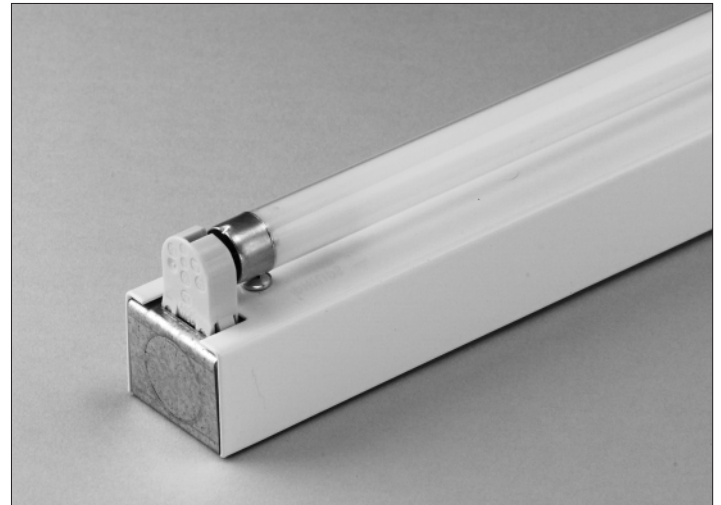


MINI-COVE T5 STRIP MINIATURE FLUORESCENT MCS SERIES



Miniature 1 7/16" wide x 2" high profile.

Utilizes premium T5 and T5 high output lamps for high lumens per watt, 85 CRI, 3000K, 3500K or 4100K color temperatures and 20,000 hour life.

Available in nominal 2', 3', 4', & 5' lengths.

Optional master/slave configuration allows two 4' luminaires to more economically operate off of one 2-lamp ballast.

Electronic ballast for maximum energy efficiency and flicker-free performance.

Optional reflectors for asymmetric or narrower symmetric light distribution.

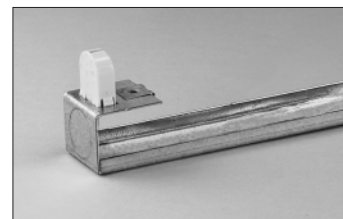
The Mini-Cove Strip's miniature profile combined with 700+ lumens/foot and excellent color rendering solves for a variety of concealed-source applications including cove, valance and casework/display integrated lighting.



W/ Asymmetric Reflector



W/ Symmetric Reflector



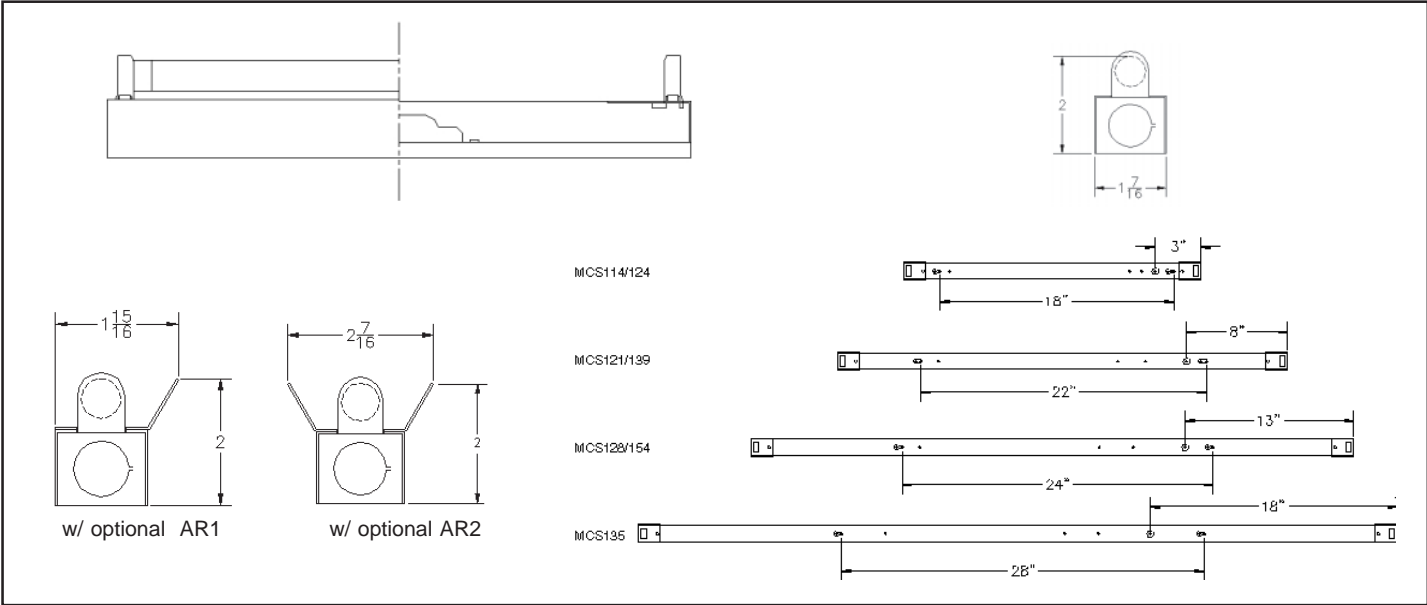
Elevated Lampholder Mounting
Provides Enhanced Wiring
Accessibility

MINI-COVE T5 STRIP

MINIATURE FLUORESCENT

MCS SERIES

TYPE



SPECIFICATIONS

CONSTRUCTION

Wireway is 18 gauge galvanized steel. Cover and optional reflectors are 20 gauge cold rolled steel.

FINISH

Housing and optional reflectors are white polyester resin powder coat with minimum reflectivity of 87%. Wireway is hot-dipped galvanized.

ELECTRICAL

High frequency electronic rapid start ballast. Universal voltage 120-277 volt standard.

Dimming

A dimming ballast—for use with an analog 0 - 10 volt fluorescent dimming control supplied by others—may be specified.

LAMPS

14 watt, 21 watt, 28 watt, 35 watt premium T5 or 24 watt, 39 watt, 54 watt T5 high output 3000K tri-phosphor lamp included with

each fixture. 3500K or 4100K tri-phosphor lamps may be specified. 20,000 hour average lamp life, 96 to 104 LPW.

INSTALLATION FEATURES

3/8" knock outs in the wireway ends accommodate supplied electrical fittings and allows for row mounting of multiple luminaires. Shallow sided wireway with elevated lampholder mounting creates open, visible wiring access.

OPTIONAL MASTER/SLAVE CONFIGURATION

One 2-lamp ballast is provided in the "master" fixture and shipped with enough wire for end-to-end row mounting with "slave" fixture less ballast. Field wiring is required. (available on MCS128 only).

Labels

UL & CUL, IBEW.

ORDERING INFORMATION

Catalog #	Lamps	Length
MCS114	1/F14T5	22 7/8"
MCS121	1/F21T5	34 11/16"
MCS128	1/F28T5	46 1/2"
MCS135	1/F35T5	58 9/32"
MCS128/2	2/F28T5	93"

Note: MCS128/2 consists of (2) fixtures in a master-slave configuration.

MCS124	1/F24T5/HO	22 7/8"
MCS139	1/F39T5/HO	34 11/16"
MCS154	1/F54T5/HO	46 3/8"

OPTIONS

/35	3500K tri-phosphor lamp substituted for standard 3000K lamp
/41	4100K tri-phosphor lamp substituted for standard 3000K lamp
/AR1	Single sided asymmetric reflector accessory
/AR2	Two-sided symmetric reflector accessory
/DIM	Dimming ballast

ELECTRICAL DATA							
Lamp Wattage	14	21	28	35	24	39	54
Input Watts	17.2	26.1	34.8	40	28	44	59
Max. Amps	.16	.24	.32	.32	.22	.37	.53
Power Factor	-- .98 --						
THD	-- <10% --						