

Maximum versatility,
highly
efficient
and simple to use.

LOUVERBAY FL4 NARROW BODY SERIES



PENDANT MOUNTED FLUORESCENT, 4' AND 8' LENGTHS
13" WIDE BODY WITH UP-LIGHT FOR 4 LAMP T8 OR T5

The new LouverBay brings new light to the T5 Highbay/Lowbay family. It is designed as a rugged one piece construction, making it more durable than any other fluorescent highbay/lowbay on the market today. The LouverBay's sleek shallow design and aesthetically pleasing louver make it ideal for today's ever changing retail market.

Project: _____
Location: _____
Catalog No: _____
Fixture Type: _____
Mfg: _____ Lamps: _____ Qty: _____
Notes: _____

Ordering Guide

Explanation of Catalog Number Example: FL4C4ULW43212004

FL Series LouverBay	Fixture Length	Reflector	Luminaire Width	Light Direction	Lens/Shielding Type	Lamps in X-Section	Lamp	Voltage	Ballast Type
<input type="text" value="FL"/>	<input type="text" value=""/>	<input type="text" value="C"/>	<input type="text" value="4"/>	<input type="text" value=""/>	<input type="text" value=""/>	<input type="text" value=""/>	<input type="text" value=""/>	<input type="text" value=""/>	<input type="text" value=""/>
One Piece Construction Pendant Fixture	4 = 4' Length 8 = 8' Length	C = Contoured Specular Inside Reflector	4 = 13 1/2"	U = Up-light	LW = Solid Louver White XX = No Shielding L3 = Solid White Louver/ 3ft Cord and Twist Lock Plug	2 = 2 Lamp 3 = 3 Lamp 4 = 4 Lamp	28 = 28W T5 32 = 32W T8 54 = 54W T5HO (Nominal 48")	UNV = 120/277V 120 = 120V 277 = 277V 347 = 347V	PG = T5/T5HO Elect. P.S. One 2 Lamp THD<10% PV = T5/T5HO Elect. P.S. One 4 Lamp THD<10% H4 = T8 Elect. I.S. One 4 Lamp THD<10% HA = T8 Elect. I.S. One 2 Lamp HBF THD<10% HC = T8 Elect. I.S. One 4 Lamp HBF THD<10% P6 = T5/T5HO Elect. P.S. (6 Lamp) One 2 Lamp Inner One 4 Lamp Outer H5 = T8 Elect. I.S. (6 Lamp) One 2 Lamp Inner One 4 Lamp Outer P8 = T8 Elect. PRS THD<10% (FL8 Only) One 4 Lamp Inner One 4 Lamp Outer

LOUVERBAY FL4

NARROW BODY SERIES

Features

- Efficiency 86.7% (based on 4 T8 32W).
- Riveted 20 gauge. One piece, post painted chassis for superior strength.
- Stem or chain mounting options.
- Contoured Miro IV reflector for optimum efficiency.
- Slim profile of 2 3/4" depth ideal for applications where ceiling height may be an issue.
- Ideal for Trade/Retail, Recreational and Industrial applications where efficiency and lighting control are required.

Specifications

Materials: Chassis parts are die-formed code 20 gauge cold rolled steel.

Finish: Chassis exterior—post painted in a white baked polyester powder coat finish.

Cavity: Post painted in a white baked polyester powder coat finish.

Reflector: Contoured or Flat Design specular reflector. 95% reflectivity.

Electrical: Thermally protected class "P" ballast C.B.M. approved, non PCB. If K.O. is within 3" of ballast, use wire suitable for at least 90°.

Labels: Listed by cCSAus.

Options/Accessories

Emergency Power Pack: Factory installed emergency power pack includes charger and inverter concealed in fixture channel. Upon loss of AC power, operates one lamp at high lumen output for a period of 90 minutes. For 347V, consult your Philips Lighting representative. **Suffix: E** (Standard Bodine LP600 O B100-CAN for T8 lamps).

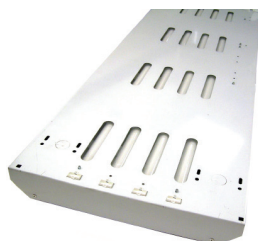
Electrical Wiring Options: Consult your Philips Lighting representative.

Stem and Canopy Kits: Suspend luminaire 12", 18", 24", 36" and 48" from surface. (Four per luminaire is recommended). **Catalog numbers: STKF12, STKF18, STKF24, STKF36, STKF48.**

Chain Suspension Option: 24" Chain Suspension Kit (Two per fixture is required). Order: **EE9HC.**

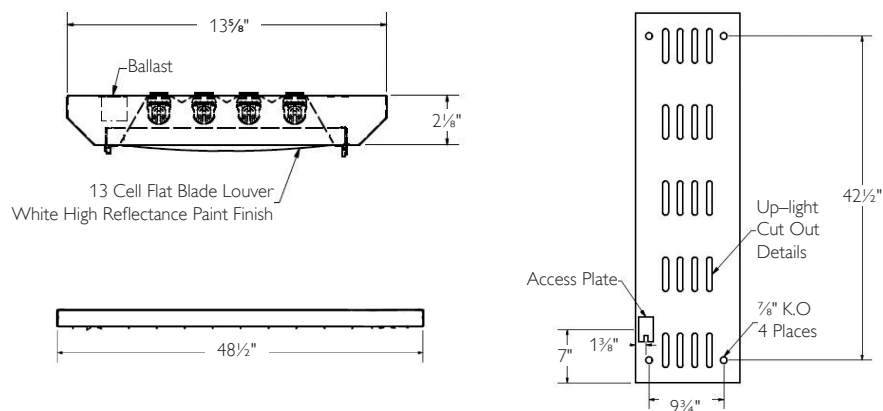


One piece radial louver with hinged and cam latch design for tool less entry to lamp compartment



Rear venting design allows for 12% up-light

Dimensions



LOUVERBAY FL4 NARROW BODY SERIES

Performance

Report Number: LSCD157

Catalog No: FL4C4ULW432120O4

Lamp Type: 4 F32T8/TL841 32W T8

Lumens per Lamp: 2950

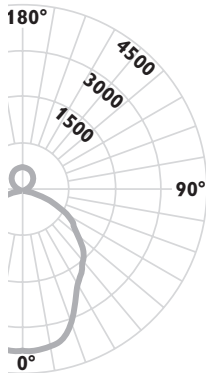
Lumen Input Watts: 113.0

Total Efficiency: 86.7%

Candela at Nadir: 4003cd

Candela Distribution

Angle	Along	22.5	45.0	67.5	Across
0	4003	4003	4003	4003	4003
5	3988	3966	3988	4000	3998
15	3735	3776	3835	3859	3849
25	3342	3385	3342	3180	3127
35	2834	2840	2608	2540	2563
45	2219	2124	2023	2092	2175
55	1538	1430	1495	1534	1577
65	896	845	912	1023	1072
75	337	333	372	403	405
85	77	50	54	36	0
90	0	0	0	0	0
95	9	0	0	0	0
105	94	59	80	67	59
115	179	119	120	161	164
125	270	213	159	113	134
135	386	334	276	224	190
145	445	430	361	316	313
155	529	503	463	409	413
165	572	569	551	518	503
175	567	582	587	600	580
180	584	584	584	584	584



Coefficients of Utilization

RC	80%				70%				50%			
RW	70	50	30	10	70	50	30	10	50	30	10	
RCR	Zonal Cavity Method Effective Floor Cavity Reflectance = .20											
Room Cavity Ratio	1	93	90	87	84	90	87	84	82	81	79	77
	2	86	80	75	71	83	77	73	69	73	69	66
	3	79	71	65	60	76	69	64	59	65	61	57
	4	73	64	57	52	70	62	56	51	59	53	49
	5	67	57	50	45	65	55	49	44	52	47	43
	6	62	51	44	39	60	50	43	38	47	42	37
	7	57	46	39	35	55	45	39	34	43	37	33
	8	53	42	35	30	51	41	34	30	39	33	29
	9	49	38	31	26	47	37	30	26	35	29	25
	10	45	34	28	23	44	34	27	23	32	26	22

Zonal Lumen Summary

Zone	Lumens	% Lamp	% Luminaire
0-30	2961	25.10	28.93
0-40	4630	39.24	45.25
0-60	7594	64.36	74.20
0-90	8995	76.23	87.89
40-90	4364	36.99	42.65
60-90	1401	11.87	13.69
90-180	1239	10.50	12.11
0-180	10,234	86.73	100.00



© 2013 Koninklijke Philips N.V. All rights reserved.
Specifications are subject to change without notice.
www.philips.com/luminaires

Philips Lighting Company
200 Franklin Square Drive
Somerset, NJ 08873
Phone: 855-486-2216

Philips Lighting Company
281 Hillmount Road
Markham ON, Canada L6C 2S3
Phone: 800-668-9008