

PHILIPS Day-Brite CFI

Healthcare

Impression
Bed Light

T8



Project: _____
Location: _____
Cat.No: _____
Type: _____
Lamps: _____ Qty: _____
Notes: _____

The Philips Day-Brite / Philips CFI Impression Bed Light provides the functions of a patient bed light in a sturdy, extruded aluminum housing that resembles custom architectural millwork. In addition to patient rooms, Impression can be specified for examination rooms, offices and over vanities.

Ordering guide

Example: IB5332120SWHHDSLNL

Model no.	Voltage	Finish	Options
<input type="text"/>	<input type="text"/>	<input type="text"/>	<input type="text"/>
2' nominal lengths	120 120V	WHG White Glossy	HDSL¹ 4-position pull cord switch for sequential control of indirect and direct lamp compartments, left end (as facing luminaire)
IB5217 1/F17T8 lamp up, 1 down	277 277V	SWH Soft White	HDSR¹ 4-position pull cord switch for sequential control of indirect and direct lamp compartments, right end (as facing luminaire)
IB5317 2/F17T8 lamps up, 2 down	347 347V	TPE Taupe	PCSR¹ Pull cord switch for on-off control of direct light compartment, right end (as facing luminaire)
IB5517 1/F17T8 lamp up, 2 down		AL Aluminum	LVC² Low voltage controller (4' models only)
IB5417 2/F17T8 lamps up, 1 down		ALM Almond	LS Less switch (only specify if 120V)
3' nominal lengths			COL¹ Convenience outlet left
IB5225 1/F25T8 lamp up, 1 down			COR¹ Convenience outlet right
IB5325 2/F25T8 lamps up, 2 down			NL² LED night light
IB5525 1/F25T8 lamp up, 2 down			GMF Slow blow fuse
IB5425 2/F25T8 lamps up, 1 down			RF2³ (2) Radio Suppressors
4' nominal lengths			
IB5232 1/F32T8 lamp up, 1 down			
IB5332 2/F32T8 lamps up, 2 down			
IB5532 1/F32T8 lamp up, 2 down			
IB5432 2/F32T8 lamps up, 1 down			

Footnotes:

¹ Available in 120V only

² LVC cannot be used with pull cords or 347V.

³ Not available in 2' or 347V.

Features

- Dual lamp compartments provide direct and indirect illumination with a variety of lamp and switching options to allow added flexibility for patients and healthcare professionals.
- Lift-out chassis, with quick electrical disconnect, can be removed independently from the housing for ease of installation and service.
- The architectural design reinforces a residential ambience.
- Optional indirect LED night light provides low level illumination to facilitate night observation and movement within the room.
- Impression is available in five standard colors. All standard finishes include an antimicrobial additive to inhibit the growth of microbes.

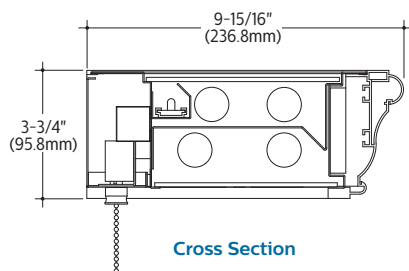
Impression Bed Light

T8

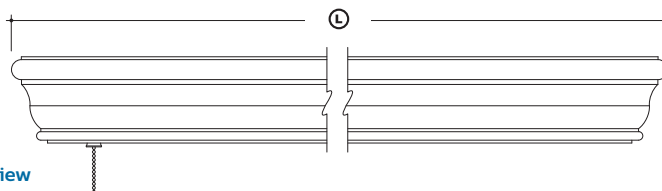
Specifications

- **Construction:** Extruded aluminum mitered and welded frame is secured to a 20 gauge cold rolled steel back plate. A drop-in chassis contains all electrical components and is die-formed from 20 gauge cold rolled steel. It is secured to the frame with 2 screws.
- **Finish:** The housing is available in five standard polyester powder coat finishes. The drop-in chassis is painted after fabrication with a high reflectance white polyester powder coat finish. All standard finishes have an antimicrobial finish to inhibit the growth of microbes.
- **Reflector & Lenses:** Clear acrylic prismatic diffuser is standard for both downlight and uplight lamp compartments. Downlight diffuser is held securely in position to avoid accidental unlodging, and is easily removed without tools via a finger tab installed onto the diffuser.
- **Lamps:** Impression is available with T8 fluorescent lamps in a variety of configurations. (See ordering information for details.) The standard color temperature is 3500K. Consult factory for alternative color temperatures.
- **Switching:** The standard switch configuration is an on-off pull chain on the left side for the direct light compartment, with the indirect light compartment controlled from a remote switch (by others). Optional 4-position pull chain switch (HDS) for sequential control of indirect and direct lamp compartments. Pull switches are supplied with a plastic pull cord that is latex-free, stain resistant, and easy to clean with standard disinfectant. There is also an optional low voltage relay (LVC) that is compatible with industry standard bed control systems (by others) and can be field wired for either separate or sequential switching of direct or indirect lamps. The luminaire can also be specified "less switch" (LS) for use with remote switching (by others) for all functions.
- **Listing:** cULus listed damp locations
- **Electrical:** Electronic, high power factor ballasts. One ballast is provided for each lamp compartment.
- **Installation:** Electrical chassis, with quick electrical disconnect, is removable from frame for ease of installation and maintenance by a single person. Luminaire should be secured to wall stud or wall reinforcement with a minimum of (4) anchors.

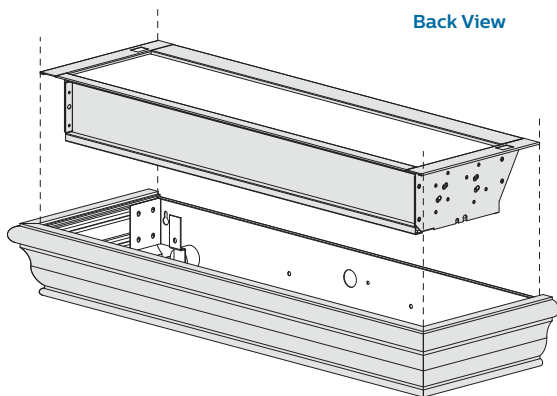
Dimensions



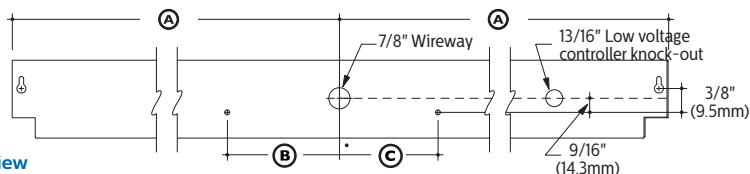
Front View



Assembly View



Back View



DIMENSION	L	A	B	C
IB5217 IB5317 IB5517 IB5417	28-3/4" (730.3mm)	14-3/8" (365.1mm)	4-3/16" (106.4mm)	4-3/16" (106.4mm)
IB5225 IB5325 IB5525 IB5425	40-3/4" (1035.1mm)	20-3/8" (517.5mm)	6-3/16" (157.2mm)	8-3/16" (208.0mm)
IB5232 IB5332 IB5532 IB5432	52-3/4" (1339.9mm)	26-3/8" (670.0mm)	8-3/16" (208.0mm)	8-3/16" (208.0mm)

© 2016 Philips Lighting Holding B.V. All rights reserved.
Philips reserves the right to make changes in specifications and/or to discontinue any product at any time without notice or obligation and will not be liable for any consequences resulting from the use of this publication.
philips.com/luminaires



Philips Lighting North America Corporation
200 Franklin Square Drive, Somerset, NJ 08873
Tel. 855-486-2216

Philips Lighting Canada Ltd.
281 Hillmount Rd, Markham, ON, Canada L6C 2S3
Tel. 800-668-9008