

Maximum versatility,
highly
efficient
and simple to use.

SEALATRON LED VTL SERIES



IP65 VAPOR RESISTANT LED LUMINAIRE

CSA listed for damp and wet locations, the Sealatron LED features a one-piece fiberglass reinforced polyester housing and a latched and gasketed acrylic lens to ensure performance in most industrial and commercial applications.

Project: _____
Location: _____
Catalog No: _____
Fixture Type: _____
Mfg: _____ Lamps: _____ Qty: _____
Notes: _____

Ordering Guide

Explanation of Catalog Number Example: VTL445A40DRULAG

Family	Luminaire Length	LED Package	Color Temperature	Lens Type	Voltage	Driver Type	Options
<input type="text" value="VTL"/>	<input type="text" value="4"/>	<input type="text"/>	<input type="text"/>	<input type="text" value="DR"/>	<input type="text"/>	<input type="text"/>	<input type="text"/>
Sealatron LED	4 = 4' Length (Nominal)	27A = 2700 Lumens 45A = 4500 Lumens (Nominal)	40 = 4000K 35 = 3500K	DR = High Impact Acrylic	UNV = 120/277V 120 = 120V 277 = 277V 347 = 347V	LAG = LED Driver DZT = 0-10V Dimming	Add Appropriate Suffix to Catalog No.



PHILIPS
Day-Brite

PHILIPS
CFI

Features

- Can be surface (wall/ceiling) or suspended mounted unless otherwise specified.
- Wet location areas of high humidity, water vapor, rain, incidental water spray, or other noncorrosive or non-flammable liquid.
- IP65 rated standard (possible upgrade to IP67—please consult your Philips Lighting representative).
- LED sources provide excellent low temperature performance, product can replace a 2 lamp T8 model in cold environments.
- Can be used in conjunction with an occupancy sensor—no reduction in life due to frequent switching.
- Suitable for ambient temperatures of -30°C to 40°C.
- Two lumen packages available.
- Non-conductive, non-corrosive housing.
- Smooth exterior surface for easy cleaning.
- White molded fiberglass reinforced polyester body.
- High Impact DR acrylic molded lens.
- Continuous closed cell, foam in-place gasket.
- ABS cam action latches.
- Lighting channel has a high reflectance baked white enamel finish.
- Two gasketed threaded (1/2" trade size) wet location hubs installed on ends.
- Meets NSF / ANSI Standard 2—Food Equipment.

Specifications

Materials: Inner chassis parts are die-formed code gauge cold rolled steel.

Lens: Injection molded, one piece impact resistant .125" starting thickness smooth virgin acrylic with crepe inner surface. Lens enclosure fully gasketed to seal fixture from dirt, moisture and other contaminants.

Latches: Lock-tight molded cam-action tension latches, securely clamps lens to fixture.

Finish: Inner chassis exterior—phosphate undercoating, baked white polyester enamel, 84% minimum reflectivity.

System Life: Long life LED provides 50,000 hours at L₇₀.

Electrical: Wet Location UL1598, also suitable for damp locations.

Labels: Listed by cULus/cETLus.

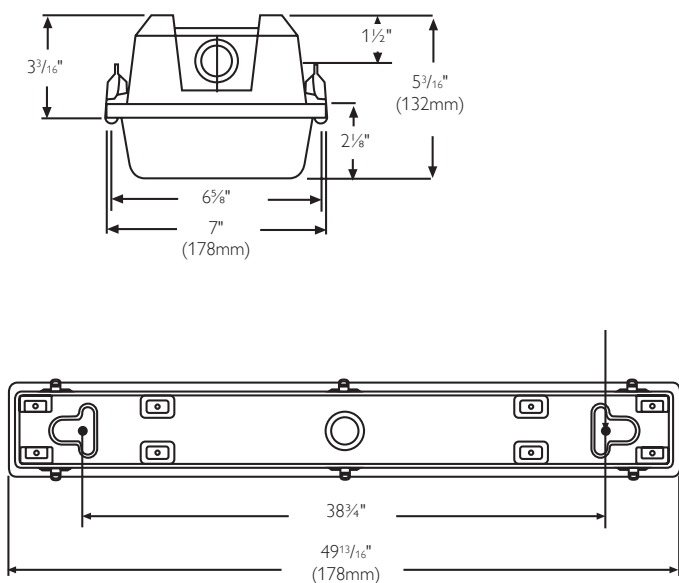
Options/Accessories

Mounting Bracket Kit: Sold separately. Order catalog number: **VTL-BRKT** (top mounting bracket) or **VTL-BRKE** (end mounting bracket)—one pair per kit.

Dimming: 0–10V (Consult your Philips Lighting representative).

Internal Fusing: Fast-blow fusing add suffix **F**.

Dimensions



SEALATRON LED VTL SERIES

Performance

Report Number*: 29464

Catalog No: VTL445A40DRULAG

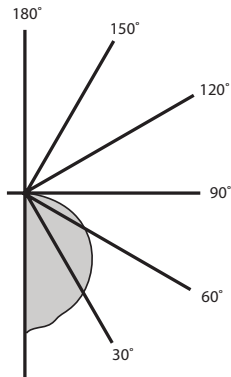
Lamp Type: LED 4000K

Lumens per Lamp: 4619

Luminaire Input Watts: 50W

Candela at Nadir: 1559cd

Total Efficiency: 92 lm/w



Candela Distribution

Angle	Along	22.5	45.0	67.5	Across
0	1558	1558	1558	1558	1558
5	1553	1559	1554	1549	1545
15	1514	1519	1514	1501	1494
25	1420	1434	1395	1378	1375
35	1273	1267	1225	1225	1220
45	1059	1022	1020	1030	1038
55	785	750	784	815	821
65	503	493	577	605	604
75	254	286	352	337	329
85	68	98	106	100	96
95	22	35	38	34	33
105	19	28	35	30	28
115	12	17	30	26	24
125	5	6	19	21	21
135	3	3	10	15	16
145	4	4	5	9	9
155	5	5	5	5	5
165	6	6	5	5	5
175	7	7	7	7	7
180	7	7	7	7	7

Performance Summary

	Lumen Output	Input Watts	Efficacy lm/w
VTL425A40DRULAG	2749	32	86
VTL445A40DRULAG	4619	50	92

Coefficients of Utilization

RC	80%				70%				50%			
RW	70	50	30	10	70	50	30	10	50	30	10	
RCR	Zonal Cavity Method Effective Floor Cavity Reflectance = .20											
Room Cavity Ratio	1	108	103	98	95	105	100	96	93	96	92	89
	2	98	89	83	77	95	87	81	76	83	78	73
	3	89	79	70	64	86	77	69	63	73	67	61
	4	82	70	61	54	79	68	60	53	65	58	52
	5	75	62	53	46	73	61	52	46	58	51	45
	6	69	56	47	40	67	55	46	40	53	45	40
	7	64	51	42	36	62	50	41	35	48	40	35
	8	60	46	38	32	58	45	37	32	44	36	31
	9	56	42	34	29	54	42	34	28	40	33	28
	10	52	39	31	26	51	38	31	26	37	30	26

Zonal Lumen Summary

Zone	Lumens	% Luminaire
0-30	1220	26.4
0-40	1997	43.2
0-60	3497	75.7
0-90	4498	97.4
90-120	91	2.0
90-130	105	2.3
90-150	116	2.5
90-180	121	2.6
0-180	4619	100.0

* Tested using absolute photometry as specified in LM79 IESNA Approved Method for the Electrical and Photometric Measurements of Solid-State Lighting Products.



© 2013 Koninklijke Philips N.V. All rights reserved.
Specifications are subject to change without notice.
www.philips.com/luminaires

Philips Lighting Company
200 Franklin Square Drive
Somerset, NJ 08873
Phone: 855-486-2216

Philips Lighting Company
281 Hillmount Road
Markham ON, Canada L6C 2S3
Phone: 800-668-9008