

CM8-A300

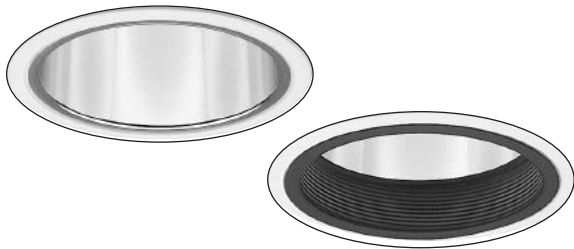
8" Incandescent Downlight and Wall Wash



Catalog Number: _____

Type: _____

Project: _____



Description

Eight inch single lamp vertical incandescent downlight. Rated for use up to 300W.

Features

- Adjustable socket cup.
- Pre-Installed quick connectors.
- Easy, snap fit installation.
- cUL listed for wet locations and through branch circuit wiring.

CATALOG SYSTEM AND OPTIONS

SAMPLE CATALOG NUMBER: CM8-A300-V85

Plaster Frame	Electrical System	Trims (Choose One)
CM8	A300	
CM8R	Lamps available for this system:	
	A - 200W ^{4,5}	V85 - Clear Reflector
	PAR30 - 75W	V85SL - Clear Reflector, Self Lipped
	R30 - 100W	V83 - Gold Reflector
	BR30 - 100W	V83SL - Gold Reflector, Self Lipped
	PAR38 - 250W ^{6,7}	V84 - Black Reflector
	R40 - 300W ^{6,7}	V84SL - Black Reflector, Self Lipped
	BR40 - 300W ^{6,7}	V86 - White Reflector
		V86SL - White Reflector, Self Lipped
		V87 - Wheat Reflector

V87SL - Wheat Reflector, Self Lipped
V85BC - Black Baffle Clear Lens Insert¹
V85BP - Black Baffle, C73 Prismatic Lens¹
V85BF - Black Baffle, Fresnel Lens¹
V85B - Low Irid. Reflector, Black Baffle
V85WB - Low Irid. Reflector, White Baffle
V85WBC - White Baffle Clear Lens Insert¹
V85WBP - White Baffle, C73 Prismatic Lens¹
V85WBF - White Baffle, Fresnel Lens Insert¹
V85 - Clear Reflector, Single Wall Wash

VWD85 - Clear Reflector, Double Wall Wash
VW83 - Gold Reflector, Single Wall Wash
VWD83 - Gold Reflector, Double Wall Wash
VW87 - Wheat Reflector, Single Wall Wash
VWD87 - Wheat Reflector, Double Wall Wash
V85C - Clear Cone, Clear Lens Insert¹
V85P - Clear Cone, C73 Prismatic Lens¹
V85F - Clear Cone, Fresnel Lens Insert¹
V86C - White Splay, Clear Lens Insert¹
V86F - White Splay, Fresnel Lens Insert¹
V86P - White Splay, C73 Prismatic Lens

CATALOG SYSTEM FOR SLOPE

Plaster Frame	Electrical System	Trims (Choose One)
CM8S ³	A300	
		V85SR10 - 5°- 15° Slope ²
		V85SR20 - 16°- 25° Slope ²
		V85SR30 - 26°- 35° Slope ²

Footnotes:

1. cUL Listed wet location.
2. For use with CM8S plaster frame only.
3. Requires ceiling cutout of 12". For use in 24" on center joist construction only.
4. Available in 100W only in V84 black trims.
5. Available in 150W only in lensed trims.
6. Available in 150W only in V84 black trims.
7. Available in 100W only in lensed trims.

General Notes:

Self-flanged has same finish as reflector.

FRAME

1. **Metal Plaster Frame** - 22 gauge die stamped metal frame with flanged edges to provide a smooth handling surface. The frame can be easily converted in the field to 4" and 6" aperture sizes with optional interchangeable aperture rings. Frames can be installed before lamp source or wattage has been determined.

Note: Suitable for installation in environmental air-handling ceilings.

2. **Mounting** - Adjustable spring steel butterfly brackets accommodate CH24 or CH48 channel bar hangers, BH3 flat bar hangers, or 1/2" EMT conduit. Frame is vertically adjustable to accommodate various mounting heights. Frame can be supported with aircraft cable where required.

ELECTRICAL SYSTEM

1. **Socket** - Medium base screw porcelain socket rated for 650W, 250V maximum.

2. **Socket Cup** - The vertical socket cup contains a medium base screw porcelain socket and is adjustable to accommodate variety of lamp sizes and beam spreads. The socket cup attaches to the trim without the need for tools and is imprinted with a socket scale to provide for uniform socket positioning.

3. **Junction Box** - Plaster frame integrated 47 cu.in. junction box with four 1/2" and two 1" knockouts. Electrical connections are made through a single junction box door, which allows all electrical systems to snap into place on the frame. All electrical systems come standard with pre-installed quick connectors for fast and easy electrical connections.

4. **cUL Listed** - cUL listed for wet locations and through branch circuit wiring. Lens trims are cUL Listed for wet location.

TRIMS

1. **Reflector** - Precision spun .050 aluminum. Removable polycarbonate trim ring is standard.

2. **Baffle** - Precision spun .040 aluminum with deep grooves to reduce aperture glare. Non-reflective matte black or white painted finishes.

3. **Lenses** - Tempered clear, C73 Prismatic, or Fresnel glass lenses. Lenses are easily removable from below the ceiling for relamping.

4. **Wall Washers** - Precision spun .050 aluminum reflectors and laser cut windows. Single or double wall, open reflectors are available.

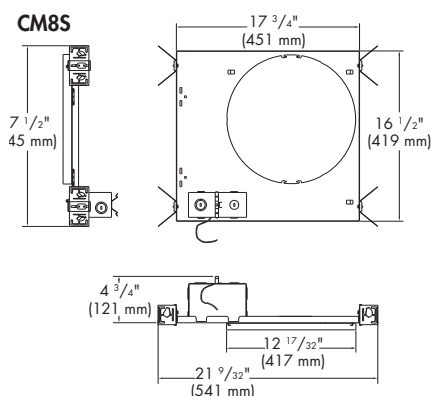
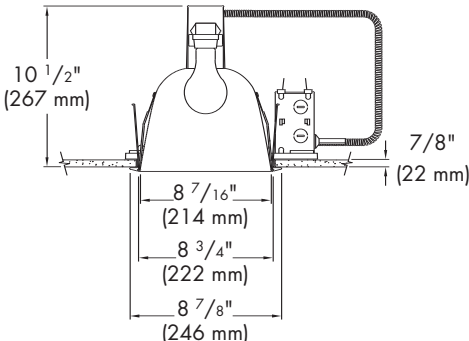
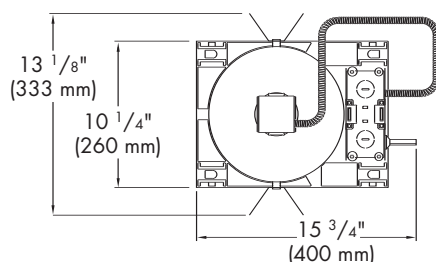
5. **Installation** - Capri One trims attach directly to the frame via expandable torsion springs.

ACCESSORIES

(Order separately/add as suffix)

27" Flat Bar Hangers.....BH3
26" C-Channel Bar Hangers.....CH24
50" C-Channel Bar Hangers.....CH48

DIMENSIONS



REV. 02/05

**V85** Clear Reflector

V85SL Clear Reflector, Self-Flanged*
A23 200W, PAR30 75W, BR30 100W,
PAR38 250W, BR40 300W

**V83** Gold Reflector

V83SL Gold Reflector, Emergency
A23 200W, PAR30 75W, BR30 100W,
PAR38 250W, BR40 300W

**V84** Black Reflector

V84SL Black Reflector, Self-Flanged*
A21 100W, PAR30 75W, BR30 100W,
PAR38 150W, BR40 150W

**V86** White Reflector

V86SL White Reflector, Self-Flanged*
A23 200W, PAR30 75W, BR30 100W,
PAR38 250W, BR40 300W

**V87** Wheat Reflector

V87SL Wheat Reflector, Self-Flanged*
A23 200W, PAR30 75W, BR30 100W,
PAR38 250W, BR40 300W



Black Baffle, Glass Lens Insert

V85BC Clear Lens
V85BF Fresnel Lens
V85BP C73 Prismatic Lens
A21 150W, PAR30 75W, BR30 100W,
PAR38 100W, BR40 100W

**V85B** Clear Reflector,
Black Baffle

A23 200W, PAR30 75W, BR30 100W,
PAR38 250W, BR40 300W

**V85WB** Clear Reflector,
White Baffle

A23 200W, PAR30 75W, BR30 100W,
PAR38 250W, BR40 300W



White Baffle, Glass Lens Insert

V85WBC Clear Lens
V85WBF Fresnel Lens
V85WBP C73 Prismatic Lens
A21 150W, PAR30 75W, BR30 100W,
PAR38 100W, BR40 100W

**VW85** Clear Reflector,
Single Wall Wash

A23 200W, PAR30 75W, BR30 100W,
PAR38 250W, BR40 300W

**VWD85** Clear Reflector,
Double Wall Wash

A23 200W, PAR30 75W, BR30 100W,
PAR38 250W, BR40 300W



Clear Cone, Glass Lens Insert

V85C Clear Lens
V85F Fresnel Lens
V85P C73 Prismatic Lens
A21 150W, PAR30 75W, BR30 100W,
PAR38 100W, BR40 100W

**VW83** Gold Reflector,
Single Wall Wash

A23 200W, PAR30 75W, BR30 100W,
PAR38 250W, BR40 300W

**VWD83** Gold Reflector,
Double Wall Wash

A23 200W, PAR30 75W, BR30 100W,
PAR38 250W, BR40 300W



White Splay, Glass Lens Insert

V86C Clear Lens
V86F Fresnel Lens
V86P C73 Prismatic Lens
A21 150W, PAR30 75W, BR30 100W,
PAR38 100W, BR40 100W

Clear Reflector, White Dome (for all slope trims).
For use with CM85 Slope Housing only.
Ceiling cutout: 12" diameter

V85SR10 Accommodates 5°-15° Slope
V85SR30 Accommodates 26°-35° Slope
V85SR20 Accommodates 16°-25° Slope

A23 200W, PAR30 75W, BR30 100W,
PAR38 250W, BR40 300W



*Self-flanged have same finish as reflector.

Capri Lighting reserves the right to make changes without notice.©2005