

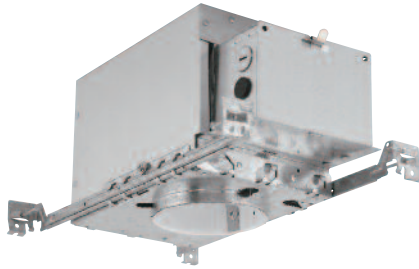
# P4LVIC/P4LVIC-EBI

4" Miniature Recessed IC/Non-IC Downlight - Low Voltage

Catalog Number: \_\_\_\_\_

Type: \_\_\_\_\_

Project: \_\_\_\_\_



## Description

Thermally protected, small 4" aperture low voltage recessed housing for use with up to 50 watt MRI 6 lamp in new constructions. Fixture is furnished with preinstalled BH2 bar hangers. c/ETL Listed for through branch wiring and damp location.

## Features

- Magnetic or electronic transformer ensures properly controlled voltage to lamp maximizing lamp life.
- IC rated for direct contact with thermal insulation.
- Thermal protection standard.
- MRI 6 50 watt maximum.
- c/ETL listed for damp locations and through branch circuit wiring.
- Provided with preinstalled BH2 adjustable bar hangers.
- Housing is AirSeal™ rated.



## CATALOG SYSTEM AND OPTIONS

SAMPLE CATALOG NUMBER: P4LVIC-P4LBW

HOUSING	TRIMS (choose only one)
P4LVIC (120V magnetic ballast)	P4LBW White Baffle w/White Flange
P4LVIC-EBI (120V electronic ballast)	P4LB Black Baffle w/Black Flange
	P4LRC Clear Reflector w/White Flange
	P4LRW White Reflector w/White Flange
	P4LRB Black Reflector w/White Flange
	P4LEW White Eyeball w/White Flange
	P4LEB Black Eyeball w/Black Flange
	P4LBWW Wall Wash, White Baffle w/White Scoop
	P4LWC Wall Wash, Clear Reflector w/White Scoop
	P4LPC Pinhole, Clear Reflector w/White Flange
	P4LWWR Retractable Wall Wash w/White Flange
	P4LSW Slot w/White Flange

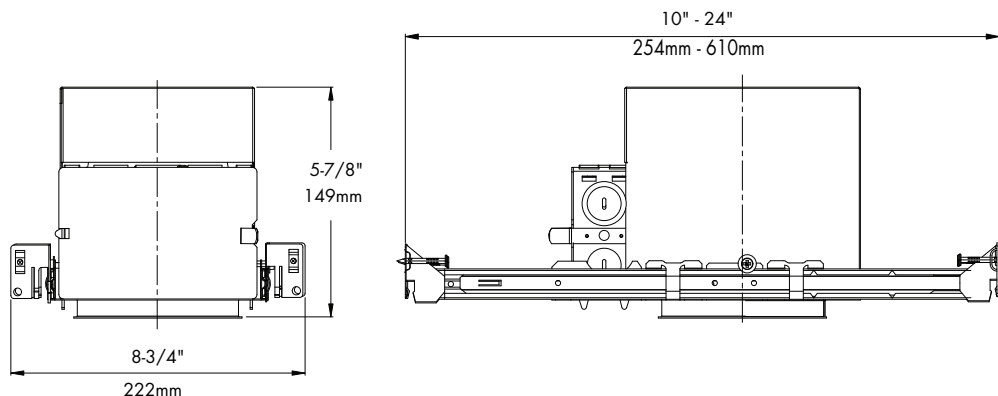
## General Notes:

See Trims on reverse side of the sheet for lamp compatibility. Custom finishes are available in select trims; please consult factory for further details.

## SPECIFICATIONS

- Housing** - Deep drawn, 20 gauge, single piece housing. Adjusts vertically in frame to accommodate ceiling thickness from 1/2" to 1" thick. Ceiling opening 4-1/4". Accommodates MRI 6 lamp up to 50 watts, 12 volt lamps.
- Plaster Frame** - Die-stamped 20 gauge galvanized steel.
- Socket** - Porcelain GU5-3 Base. Pre-wired with 18 gauge teflon 250 degree leads to junction box.
- Transformer** - Class H magnetic transformer attached to one cover of junction box. Electronic transformer ensures properly controlled voltage to lamps maximizing lamp life. Transformer can be removed from below ceiling. 120v only.
- Bar Hangers** - Pre-installed BH2 adjustable bar hangers telescope from 10" to 24". Bar hangers are equipped with heavy duty fluted nails. Interlocking support tabs provide smooth adjustment of bar hanger. Integral notch for installation on T-grid ceilings.
- Junction Box** - Large 18 gauge galvanized steel with two snap-on covers and grounding pigtail. Knock-outs for 1/2" and 3/4" conduit. Integral cable clamp permits attachment of non-metallic Romex without the need of additional connectors. Meets all safety requirements of c/ETL and N.E.C.
- Thermal Protection** - Standard thermal protection device inside housing automatically takes the fixture out of service if temperature becomes excessive from overlampping or using the wrong lamp/trim combination.
- c/ETL Listed** - Certified for a maximum of 6 No.14 ga. 90° C through branch wiring conductors. Meets all safety requirements of c/ETL and N.E.C. Above ceiling access is required. Transformer is accessible below ceiling.
- Trims** - Spun and stamped steel is powder coated in a variety of colors. Features three spring steel friction fit clips for secure hold within housing. Available in a wide variety of styles; clear lens included.

## DIMENSIONS



REV. 02/10

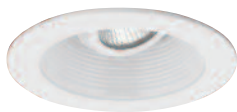


PHILIPS CAPRI  
776 South Green St., Tupelo, MS 38804  
Phone 662.842.7212 FAX 662.841.5501  
www.caprilighting.com

PHILIPS DAYBRITE CANADA:  
189 Bullock Drive, Markham, Ontario, Canada L3P 1W4  
Phone 905.294.9570 FAX 800.268.0003  
www.day-britecanada.com

CP4-I

4" MINIATURE TRIMS - NEW CONSTRUCTION



**P4LBW**  
White Baffle w/white flange  
5" O.D. (127 mm)  
45° Tilt

Lamp	IC	Non-IC
MR16	50W	50W



**P4LB**  
Black baffle w/black flange  
5" O.D. (127 mm)  
45° Tilt

Lamp	IC	Non-IC
MR16	50W	50W



**P4LRC (Shown)**  
Clear reflector w/white flange

**P4LRW**  
White reflector w/white flange  
5" O.D. (127 mm)  
45° Tilt

Lamp	IC	Non-IC
MR16	50W	50W



**P4LRB**  
Black reflector w/white flange  
5" O.D. (127 mm)  
45° Tilt

Lamp	IC	Non-IC
MR16	50W	50W



**P4LEW**  
White Baffle w/white flange  
5" O.D. (127 mm)  
30° Tilt

Lamp	IC	Non-IC
MR16	50W	50W



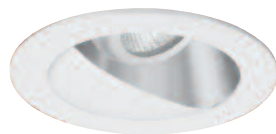
**P4LEB**  
Black baffle w/black flange  
5" O.D. (127 mm)  
30° Tilt

Lamp	IC	Non-IC
MR16	50W	50W



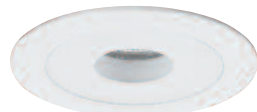
**P4LBWW**  
Wall wash, white baffle w/white scoop  
5" O.D. (127 mm)  
45° Tilt

Lamp	IC	Non-IC
MR16	35W	35W



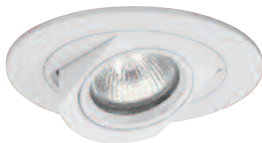
**P4LWC**  
Wall wash, clear reflector w/white scoop  
5" O.D. (127 mm)  
45° Tilt

Lamp	IC	Non-IC
MR16	35W	35W



**P4LPC**  
Pinhole, clear reflector with white flange  
5" O.D. (127 mm)

Lamp	IC	Non-IC
MR16	50W	50W



**P4LWWR**  
Retractable wall wash, w/white flange  
5" O.D. (127 mm)  
75° Tilt

Lamp	IC	Non-IC
MR16	35W	35W



**P4LSW**  
Slot, white flange  
5" O.D. (127 mm)  
45° Tilt

Lamp	IC	Non-IC
MR16	35W	35W



**2" COLOR FILTERS FOR MR16**

CF1	Clear Lens
CF2	Spread Lens
CF3	Medium Blue Filter
CF4	Medium Red Filter
CF5	Medium Green Filter
CF7	Yellow Filter
CF8	Pink Filter
CF9	Linear Spread
CF10	UV Filter
CF11	Frosted Lens
CF12	Medium Amber Filter
CL0	2" Honeycomb Louver (requires lensed MR16 lamp)
LCL0	2" Louver and Snoot

Philips Capri reserves the right to make changes without notice. ©2010