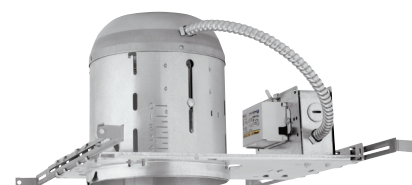


Recessed Compact Fluorescent

CFR6V13Q/18Q/26Q/32 6" Design/Build Non-IC Rated Open Vertical Downlight



application

- Non-IC rated downlight for long-life, energy efficient compact fluorescent lamps. Provides a broad, uniform light distribution with excellent color rendition. Ideal for areas that require long hours of continuous operation.

features

- Non-insulated ceiling application.
- Specular reflectors for excellent light output.
- Grooved baffle reduces glare at aperture.
- Die-stamped plaster frame.
- cULus listed for damp locations and through branch circuit wiring.
- California Title 24 compliant.

construction

- Ballast: Electronic ballast (U) is universal voltage (120 through 277), total harmonic distortion less than 10% (THD<10%) and high power factor (+70.90%). NEI ballast is normal power factor (>0.50) 120V electronic.
- Bar Hangers: Pre-installed BH1 pre-nailed bar hangers telescope from 16" to 24". Vertical design of interlocking bar hangers prevents sagging even at full 24" extension. Alignment holes on bar hangers permit joist centering during installation. Includes built in grid clips for attachment to NEMA G ceilings.
- Plaster Frame: Die-stamped 22 gauge galvanized steel. Accepts BH1 bar hangers in captive feature preventing bar hanger fall-off. Mounting frame accommodates ceiling materials 1/2" to 1-3/8" thick.

- Reflector: Precision spun .050 aluminum with anodized or painted finish.
- Baffle: Precision spun .040 aluminum with deep grooves to reduce aperture glare. Non-reflective matte black or white finish.
- Socket: One vertically mounted plug-in socket orients lamp at optical focal plane of reflector for precise optics.
- Junction Box: Extra large 32 cubic inch .063" galvanized steel with snap on cover and ground wire riveted to frame. Approved for Through Branch Circuit Wiring with up to 8 #12 AWG conductors.
- cUL listed: for damp locations. 4in/4out through branch wiring.

accessories (ordered separately)

- Emergency Remote Field installable Kit **ER-FK**



Specifier's Reference

Project

Type

Model No.

Comments

Sample Catalog Number: CFR6V13QU-RMA101W

Housing

CFR6V13Q – CFM13/GX24Q (electronic)
CFR6V18Q – CFM18/GX24Q (electronic)
CFR6V26Q – CFM26/GX24Q (electronic)
CFR6V2632² – CFM26/GX24 CFM32/GX24

Ballast

U – Universal Electronic high power factor ballast
S3 – Electronic 347 Volt

Dimming

DX1 – 120 Volt dimming¹
DX2 – 277 Volt dimming¹
DA1 – 120 Volt dimming normal power factor³

Trims (choose one)

RMA100CLR – Specular Refl. Clear
RMA100BLK – Specular Refl. Black
RMA101 – Clear Refl. Baffle Black
RMA101W – Clear Refl. Baffle White
R25P – White Wall Washer
SH12P – White Alabite Shower
SH16P – White Drop Opal Shower
PSH12P – White Polycarbonate Alabite Shower
R13P – White Fresnel Lensed

Footnotes:

1. Consult factory for 13 Watt dimming.
2. Available with Universal or S3 ballasts only.
3. DA1 available with CFR6V26Q only. 120V only. Two wire phase dimming to 15%.

General Notes:

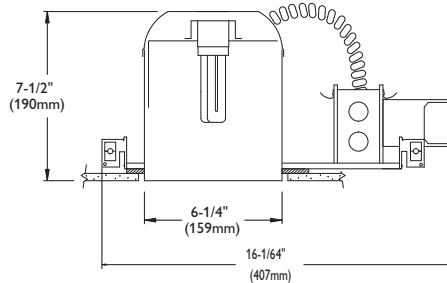
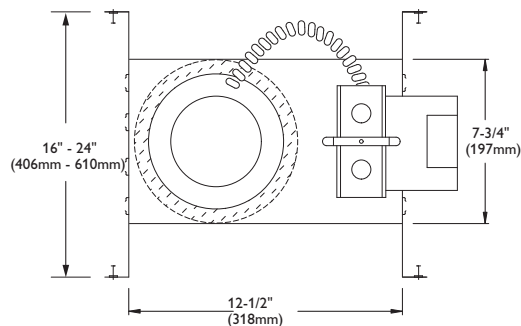
Lamp compatibility is noted under housings.
Universal electronic ballast is available with GX24Q lamp only.
DX1 and DX2 are standard Advance Mark X dimming.
Optional DL1 and DL2 for Lutron ECO System dimming available.

RC2-1

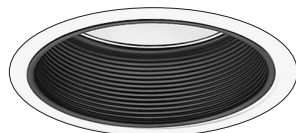
dimensions

Rev. 02/12

6" Design/Build Non-IC Rated Open Vertical Downlight



trims



RMA101 Clear Reflector Black Baffle
RMA101W Clear Reflector White Baffle

7-1/16" O.D. (179 mm)

Housing	Lamp
CFR6V13Q	CFM13W/GX24Q
CFR6V18Q	CFM18W/GX24Q
CFR6V26Q	CFM26W/GX24Q
CFR6V2632Q	CFM26W/GX24Q
	CFM32W/GX24Q



RMA100CLR Specular Reflector Clear
RMA100BLK Specular Reflector Black

7-1/16" O.D. (179 mm)

Housing	Lamp
CFR6V13Q	CFM13W/GX24Q
CFR6V18Q	CFM18W/GX24Q
CFR6V26Q	CFM26W/GX24Q
CFR6V2632Q	CFM26W/GX24Q
	CFM32W/GX24Q



R25P Wall Wash

8" O.D. (203 mm)

Housing	Lamp
CFR6V13Q	CFM13W/GX24Q
CFR6V18Q	CFM18W/GX24Q
CFR6V26Q	CFM26W/GX24Q
CFR6V2632Q	CFM26W/GX24Q
	CFM32W/GX24Q



PSH12P (Shown)
Polycarbonate Shower-Polymer Opal Lens
Wet Location
8" O.D. (203 mm)

Housing	Lamp
CFR6V13Q	CFM13W/GX24Q
CFR6V18Q	CFM18W/GX24Q



R13P (Shown)
Fresnel White

8" O.D. (203 mm)

Housing	Lamp
CFR6V13Q	CFM13W/GX24Q
CFR6V18Q	CFM18W/GX24Q
CFR6V26Q	CFM26W/GX24Q



SH12P (Shown)
Albalite Shower Light, White

Bracket Required
Wet Location
8" O.D. (203 mm)

Housing	Lamp
CFR6V13Q	CFM13W/GX24Q
CFR6V18Q	CFM18W/GX24Q
CFR6V26Q	CFM26W/GX24Q



SH16P (Shown)
Drop Opal Glass, White Metal Flange

Bracket Required
Wet Location
8" O.D. (203 mm)

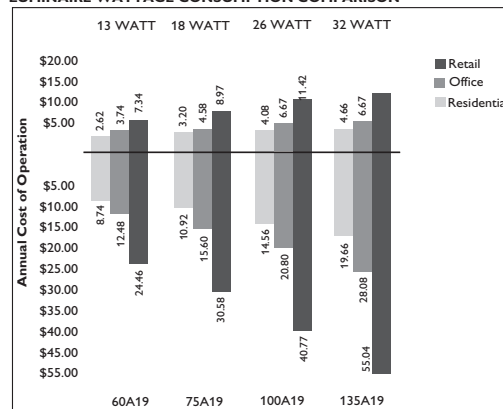
Housing	Lamp
CFR6V13Q	CFM13W/GX24Q
CFR6V18Q	CFM18W/GX24Q
CFR6V26Q	CFM26W/GX24Q

energy data

Operating Characteristics

Catalog Number	Lamp	Line Amps	Input Watts	Power Factor	Min. Start Temp.
CFR6V13QU-120V	CFQ13W/GX24Q	0.15	18	98%	0°F
CFR6V13QU-277V	CFQ13W/GX24Q	0.07	18	98%	0°F
CFR6V18QU-120V	CFQ18W/GX24Q	0.19	22	98%	0°F
CFR6V18QU-277V	CFQ18W/GX24Q	0.08	22	98%	0°F
CFR6V26QU-120V	CFQ26W/GX24Q	0.25	28	98%	0°F
CFR6V26QU-277V	CFQ26W/GX24Q	0.11	28	98%	0°F
CFR6V26QU-120V	CFM26W/GX24Q	0.25	28	98%	0°F
CFR6V26QU-277V	CFM26W/GX24Q	0.11	28	98%	0°F
CFR6V32QU-120V	CFM32W/GX24Q	0.32	36	98%	0°F
CFR6V32QU-277V	CFM32W/GX24Q	0.14	36	98%	0°F

LUMINAIRE WATTAGE CONSUMPTION COMPARISON



©2012 Philips Omega
All rights reserved.

776 South Green Street • Tupelo, MS 38804
p. 800.234.1890 • f. 662.841.5501
www.omegalighting.com
Canadian Division
189 Bullock Drive • Markham, Ontario L3P 1W4
p. 905.294.9570 • f. 905.294.9811

Contact Factory for Additional Configurations.

Specifications are subject to change without notice.

Some luminaires use fluorescent or high intensity discharge (HID) lamps that contain small amounts of mercury. Such lamps are labeled, "Contain Mercury" and/or the symbol "HG". Lamps that contain mercury must be disposed of in accordance with local requirements. Information regarding lamp recycling and disposal can be found at www.lamprecycle.org

