

application

- IC rated remodel downlight for long-life, energy efficient compact fluorescent lamps. Provides broad, uniform light distribution with excellent color rendition. Ideal for areas that require long hours of continuous operation.

features

- AirSeal™ housing.
- Socket snaps into trim for consistent lamp position.
- IC rated for insulated ceiling applications.
- Specular reflectors for excellent light output.
- Grooved baffle reduces glare at aperture.
- Die-stamped plaster frame.
- c/ETL listed for damp locations and through branch circuit wiring.
- California Title 24 compliant.

construction

- Ballast: **NE1** 120V electronic normal power factor ballasts operates four pin GX24q compact fluorescent lamps over 45khz. Ballast meets FCC Part 18 on consumer limits on EMI/RFI. Minimum starting temperature of 0 degrees Fahrenheit. Ballast features auto shutdown at end of lamp life. **NE1** electronic normal power factor ballast is designed to operate compact fluorescent lamps to ANSI Standard IEC C-78-901-2005. **DA1** 120V electronic normal power factor powerline dimming ballast. Continuous dimming down to 15 percent. Minimum starting temp of 50 degrees Fahrenheit. Ballast meets FCC Part 18 on consumer limits to EMI/RFI. Ballast is designed to operate compact fluorescent lamps to ANSI standard IEC C-78-901-2005. Universal voltage (**U**) is 120V through 277V, total harmonic distortion less than 10% (THD<10%) and high power factor (>0.90).

plaster or mechanical ceilings from 1/4" to 1-1/4" thick. Remodel clips are retractable for easy fixture removal and maintenance.

- Reflector: Precision spun .050 aluminum with anodized or paint finish.
- Baffle: Precision spun .040 aluminum with deep grooves to reduce aperture glare. Non-reflective matte black or white finish.
- Socket: Compact fluorescent socket mounted to socket supporting bracket allows socket to snap directly to finishing trim. Secured socket provides consistent luminaire-to-luminaire lamp position.
- Junction Box: Extra large 32 cubic inch .063" galvanized steel with snap on cover and ground wire riveted to frame. Approved for Through Branch Circuit Wiring with up to 3 #12 guage AWG conductors. Knockouts for 1/2" and 3/4" conduit and 4 romex pry-outs with strain relief. Meets all safety requirements of UL, ETL, and NEC.
- ETL listed: for damp locations. 3in/3out through branch wiring.
- AirSeal™: Luminaire is AirSeal™ rated per ASTM E283 limiting the passage of air through housing to no more than 2.0 CFM at 75 Pascals. AirSeal™ housing meets restricted airflow requirements of Washington State Energy Code (W.S.E.C.) and International Energy Conservation Code (I.E.C.C.). Luminaire supplied with gasket in junction box to ensure AirSeal™ installation.



- Remodel Clips: For fast installation in existing

RC2-4.1

Rev. 02/12

Recessed Compact Fluorescent

CFRRIC6V13Q/18Q/26QNB

6" Remodel Design/Build
IC Rated Vertical Downlight,
Socket Supporting



Specifier's Reference

Project

Type

Model No.

Comments

Sample Catalog Number: CFRRIC6V18QUNB-RBA101

Housing		Ballast		Socket		Trims (choose one)	
CFRRIC6V13Q – CFM13/GX24Q (electronic)		NE1 – Electronic normal power factor ballast 120V		NB – No Bracket standard		RBD40 – Deep Full Baffle, Black	
CFRRIC6V18Q – CFM18/GX24Q (electronic)		U – Universal Electronic high power factor ballast 120-277V				RBD40W – Deep Full Baffle, White	
CFRRIC6V26Q – CFM26/GX24Q (electronic)		DA1 – Electronic normal power factor dimming ballast 120V				RBC30M – Full Baffle Black	
						RBC30WM – Full Baffle White	
						RAD40W – Deep Cone, White	
						RAD40CLR – Deep Cone, Clear	
						RBA100CLR – Specular Refl. Clear	
						RBA100BLK – Black Reflector	
						RBA100WHT – White Reflector	
						RB101 – Clear Refl. Baffle Black	
						RB101W – Clear Refl. Baffle White	
						SHR61CW – Shower Trim, Regressed Prismatic Lens, Polycarbonate Flange	
						RB45W – Scoop Wall Wash, White Baffle	
						RB45 – Scoop Wall Wash, Black Baffle	

Footnotes:

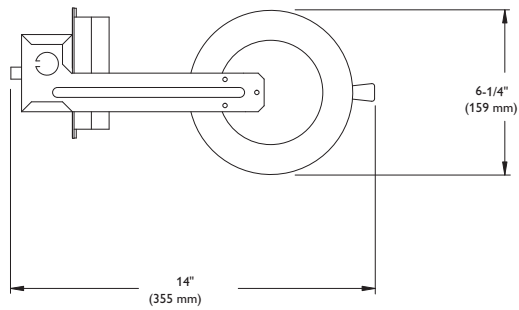
1. DA1 for 26 Watt models only. Two wire phase dimming to 15%.

General Notes:

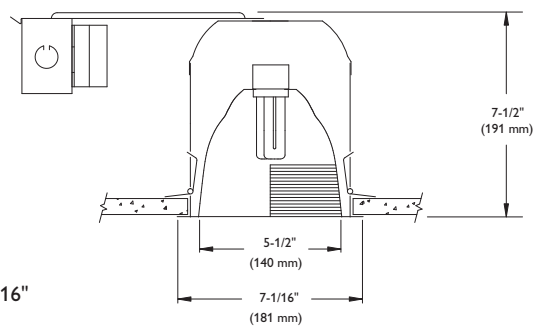
Lamp compatibility is noted under housings. Electronic ballast available with GX24Q lamp only.

PHILIPS
capri

dimensions



Cutout: 6-7/16"



trims



RBC30M (shown)
Full Black Baffled Reflector; with leaf springs
RBC30W
Full White Baffled Reflector; with leaf springs
7-1/16" O.D. (179 mm)

Housing	Lamp
CFRRIC6V13QNB	CFM13W/GX24Q
CFRRIC6V18QNB	CFM18W/GX24Q
CFRRIC6V26QNB	CFM26W/GX24Q



RB30 (Shown) Full Black Baffle
RB30W Full White Baffle
RB30TBZ* Tuscan Bronze Full Baffle
RB30CBN* Coffee Bean Full Baffle

*Flange matches trim finish

7-1/16" O.D. (179 mm)

Housing	Lamp
CFRRIC6V13Q	CFM13W/GX24Q
CFRRIC6V18Q	CFM18W/GX24Q
CFRRIC6V26Q	CFM26W/GX24Q



RB101 (shown) Clear Reflector Black Baffle
RB101W Clear Reflector White Baffle
7-1/16" O.D. (179 mm)

Housing	Lamp
CFRRIC6V13Q	CFM13W/GX24Q
CFRRIC6V18Q	CFM18W/GX24Q
CFRRIC6V26Q	CFM26W/GX24Q



RBA100CLR (shown) Specular Reflector Clear
RBA100WHT White Reflector
7-1/16" O.D. (179 mm)

Housing	Lamp
CFRRIC6V13Q	CFM13W/GX24Q
CFRRIC6V18Q	CFM18W/GX24Q
CFRRIC6V26Q	CFM26W/GX24Q



SHR6ICW
Polycarbonate Shower-Prismatic Glass
8" O.D. (203 mm)

Housing	Lamp
CFRRIC6V13Q	CFM13W/GX24Q
CFRRIC6V18Q	CFM18W/GX24Q
CFRRIC6V26Q	CFM26W/GX24Q



RB45 (shown) Scoop Wall Wash, Black Baffle
RB45W Scoop Wall Wash, White Baffle
Socket Supporting

7-1/16" O.D. (179 mm)

Housing	Lamp
CFRRIC6V13Q	CFM13W/GX24Q
CFRRIC6V18Q	CFM18W/GX24Q
CFRRIC6V26Q	CFM26W/GX24Q



RBD40W (Shown) Deep Stepped Baffle White
RBD40 Deep Stepped Baffle Black
Socket Supporting

7-1/16" O.D. (179 mm)

Housing	Lamp
CFRRIC6V13Q	CFM13W/GX24Q
CFRRIC6V18Q	CFM18W/GX24Q
CFRRIC6V26Q	CFM26W/GX24Q



RAD40W (shown) Deep Cone White
RAD40CLR Deep Cone Clear
Socket Supporting

8" O.D. (203 mm)

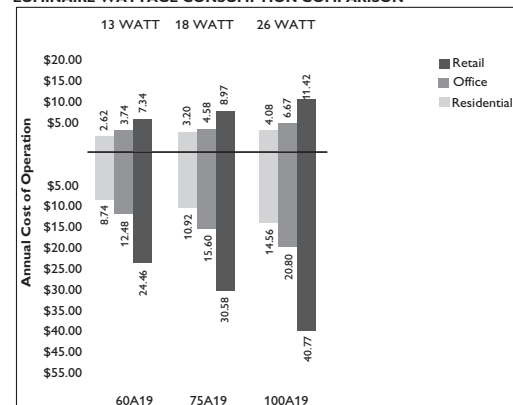
Housing	Lamp
CFRRIC6V13Q	CFM13W/GX24Q
CFRRIC6V18Q	CFM18W/GX24Q
CFRRIC6V26Q	CFM26W/GX24Q

energy data

Operating Characteristics

Catalog Number	Lamp	Line Amps	Input Watts	Power Factor	Min. Start Temp.
CFRRIC6V13QNE1NB	CFQ13W/GX24Q	0.26	17	50%	0°F
CFRRIC6V13QUNB-120V	CFQ13W/GX24Q	0.15	17	98%	0°F
CFRRIC6V13QUNB-277V	CFQ13W/GX24Q	0.07	17	98%	0°F
CFRRIC6V18QNE1NB	CFQ18W/GX24Q	0.34	22	50%	0°F
CFRRIC6V18QUNB-120V	CFQ18W/GX24Q	0.19	22	98%	0°F
CFRRIC6V18QUNB-277V	CFQ18W/GX24Q	0.08	22	98%	0°F
CFRRIC6V26QNE1NB	CFQ26W/GX24Q	0.40	28	50%	0°F
CFRRIC6V26QUNB-120V	CFQ26W/GX24Q	0.32	28	98%	0°F
CFRRIC6V26QUNB-277V	CFQ26W/GX24Q	0.014	28	98%	0°F
CFRRIC6V26QDA1NB	CFQ26W/GX24Q	0.45	28	50%	50°F

LUMINAIRE WATTAGE CONSUMPTION COMPARISON



CFRRIC6V13Q-RBA100CLR

Tested to LM-79 standards.

Open Clear Reflector		Candle Power				lighting performance data						
Test No.	24260	Angle	End	At 90°	Foot Lamberts	ceiling height	intial foot candles	beam diam. (ft.-in.)				
S/MH	90 Degree=1.4	90	0	0		8	8.4	12 - 8				
	0 Degree=1.3	85	0	0	0	10	4.5	17 - 3				
Lamp Type	CFQ13W	75	5	4	278	12	2.8	21 - 10				
IES File	24260D1.IES	65	46	46	1742	14	1.9	26 - 6				
Luminaire Efficacy	64.3%	55	102	103	2859	16	1.4	31 - 1				
Beam Angle	98.05	45	162	168	3734	Coefficients of Utilization						
						pcc	80		70		50	
						pw	50	30	50	30	50	30
						RCR						
						0	77	77	77	70	70	70
						1	68	67	65	65	63	61
						2	61	57	55	57	55	53
						3	55	50	46	52	48	46
						4	48	44	40	46	42	40
						5	44	39	34	41	38	34
						6	40	34	30	38	34	30
						7	36	30	28	34	30	27
						8	33	28	25	32	28	25
						9	30	26	22	29	25	22
						10	28	23	20	28	23	20

CFRRIC6V26Q-RBA100CLR

Tested to LM-79 standards.

Open Clear Reflector		Candle Power				lighting performance data		
Test No.	24249	Angle	End	At 90°	Foot Lamberts	ceiling height	intial foot candles	beam diam. (ft.-in.)
S/MH	90 Degree=1.3	90	5	6		8	13.9	15 - 7
	0 Degree=1.3	85	14	13	2478	10	7.5	21 - 2
Lamp Type	CFQ26W	75	68	73	4358	12	4.7	26 - 10
IES File	24249D1.IES	65	132	142	5187	14	3.2	32 - 6
Luminaire Efficacy	64.5%	55	207	212	5844	16	2.3	38 - 2
Beam Angle	109.43	45	283	289	6471	Coefficients of Utilization		
		35	352	356		pcc	80	
		25	387	386		pw	50	30
		15	392	389		RCR	50	30
		5	415	411		0	77	77
		0	420	420		1	68	65
						2	58	55
						3	52	46
						4	46	40
						5	40	34
						6	36	30
						7	34	28
						8	30	25
						9	28	23
						10	26	20



©2012 Philips Omega
All rights reserved.
776 South Green Street • Tupelo, MS 38804
p. 800.234.1890 • f. 662.841.5501
www.omegalighting.com
Canadian Division
189 Bullock Drive • Markham, Ontario L3P 1W4
p. 905.294.9570 • f. 905.294.9811

Contact Factory for Additional Configurations.

Specifications are subject to change without notice.

Some luminaires use fluorescent or high intensity discharge (HID) lamps that contain small amounts of mercury. Such lamps are labeled, "Contain Mercury" and/or the symbol "HG". Lamps that contain mercury must be disposed of in accordance with local requirements. Information regarding lamp recycling and disposal can be found at www.lamprecycle.org

