

Recessed Compact Fluorescent

CFRR6V13Q/18Q/26Q

6" Remodel Design/Build
Non-IC Rated Vertical Downlight



Specifier's Reference

Project

Type

Model No.

Comments

application

- Non-IC rated remodel downlight for long-life, energy efficient compact fluorescent lamps. Provides broad, uniform light distribution with excellent color rendition. Ideal for areas that require long hours of continuous operation.

features

- Non-IC ceiling applications.
- Specular reflectors for excellent light output.
- Grooved baffle reduces glare at aperture.
- Die-stamped plaster frame.
- cULus listed for damp locations and through branch circuit wiring.

construction

- Ballast: Electronic ballast (U) is universal voltage (120 through 277), total harmonic distortion less than 10% (THD<10%) and high power factor (+70.90%). NEI ballast is normal power factor (>0.50) 120V electronic.
- Remodel Clips: For fast installation in existing plaster or mechanical ceilings from 1/4" to 1-1/4" thick. Remodel clips are retractable for easy fixture removal and maintenance.
- Reflector: Precision spun .050 aluminum with anodized or painted finish.
- Baffle: Precision spun .040 aluminum with deep grooves to reduce aperture glare. Non-reflective matte black or white finish.

- Socket: Compact fluorescent socket mounted to socket supporting bracket allows socket to snap directly to finishing trim. Secured socket provides consistent luminaire-to-luminaire lamp position.
- Junction Box: Extra large 32 cubic inch .063" galvanized steel with snap on cover and ground wire riveted to frame. Approved for Through Branch Circuit Wiring with up to 3 #12 gauge AWG conductors. Knockouts for 1/2" and 3/4" conduit and 4 romex pry-outs with strain relief. Meets all safety requirements of UL, ETL, and NEC.
- cULus listed: for damp locations. 3in/3out through branch wiring.

accessories (ordered separately)

- Emergency Remote Field installable Kit **ER-FK**



Sample Catalog Number: CFRR6V18QU-RB101W

Housing

CFRR6V13Q – CFM13/GX24Q (electronic)
CFRR6V18Q – CFM18/GX24Q (electronic)
CFRR6V26Q – CFM26/GX24Q (electronic)

Ballast

NE1 – Electronic normal power factor ballast 120V
U – Universal Electronic high power factor ballast
53 – Electronic 347 volt

Socket

DX1 – 120 Volt dimming¹
DX2 – 277 Volt dimming¹
DA1 – 120 Volt dimming normal power factor²

Trims (choose one)

RMA100CLR – Specular Refl. Clear
RMA100BLK – Specular Refl. Black
RMA101 – Clear Refl. Baffle Black
RMA101W – Clear Refl. Baffle White
R25P – White Wall Washer
SH12P – White Albalite Shower
SH16P – White Drop Opal Shower
R13P – White Fresnel Lens
PSH12P – White Polycarbonate Albalite Shower

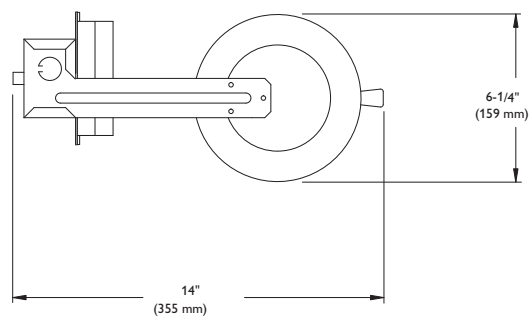
Footnotes:

1. Consult factory for 13 Watt dimming.
2. DA1 for 26 Watt models only. Two wire phase dimming to 15%.

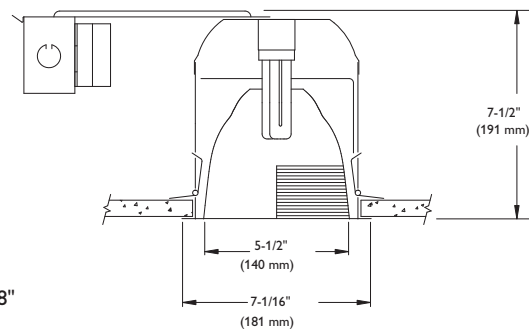
General Notes:

Lamp compatibility is noted under housings. Universal electronic ballast is available with GX24Q lamp only. DX1 and DX2 are standard Mark X dimming. Optional DL1 and DL2 for Lutron ECO system dimming available.

dimensions



Cutout: 6-3/8"



trims



RMA100CLR Specular Reflector Clear
RMA100BLK Specular Reflector Black

7-1/16" O.D. (179 mm)

Housing	Lamp
CFRRIC6V13Q	CFM13W/GX24Q
CFRRIC6V18Q	CFM18W/GX24Q
CFRRIC6V26Q	CFM26W/GX24Q



RMA101 (shown)
Clear Reflector Black Baffle
RMA101W
Clear Reflector White Baffle

7-1/16" O.D. (179 mm)

Housing	Lamp
CFRRIC6V13Q	CFM13W/GX24Q
CFRRIC6V18Q	CFM18W/GX24Q
CFRRIC6V26Q	CFM26W/GX24Q



R25P (shown)
Wall Wash

8" O.D. (203 mm)

Housing	Lamp
CFRRIC6V13Q	CFM13W/GX24Q
CFRRIC6V18Q	CFM18W/GX24Q
CFRRIC6V26Q	CFM26W/GX24Q



PSH12P Polycarbonate Shower
Light, Polymer Opal Lens

Bracket Required

Wet Location
8" O.D. (203 mm)

Housing	Lamp
CFRRIC6V13Q	CFM13W/GX24Q
CFRRIC6V18Q	CFM18W/GX24Q



R13P
Fresnel, White

Bracket Required
8" O.D. (203 mm)

Housing	Lamp
CFRR6V13Q	CFM13W/GX24Q
CFRR6V18Q	CFM18W/GX24Q
CFRR6V26Q	CFM26W/GX24Q



SH12P (Shown)
Albalite Shower Light, White

Bracket Required
Wet Location
8" O.D. (203 mm)

Housing	Lamp
CFRR6V13Q	CFM13W/GX24Q
CFRR6V18Q	CFM18W/GX24Q
CFRR6V26Q	CFM26W/GX24Q



SH16P (Shown)
Drop Opal Glass, White Metal Flange

Bracket Required
Wet Location
8" O.D. (203 mm)

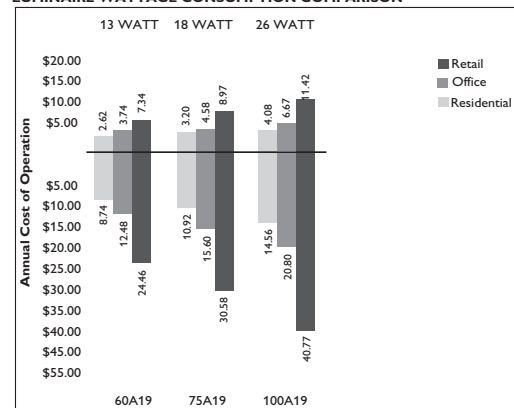
Housing	Lamp
CFRR6V13Q	CFM13W/GX24Q
CFRR6V18Q	CFM18W/GX24Q
CFRR6V26Q	CFM26W/GX24Q

energy data

Operating Characteristics

Catalog Number	Lamp	Line Amps	Input Watts	Power Factor	Min. Start Temp.
CFRR6V13QNE1	CFQ13W/GX24Q	0.26	17	50%	0°F
CFRR6V13QU-120V	CFQ13W/GX24Q	0.15	17	98%	0°F
CFRR6V13QU-277V	CFQ13W/GX24Q	0.07	17	98%	0°F
CFRR6V18QNE1	CFQ18W/GX24Q	0.34	22	50%	0°F
CFRR6V18QU-120V	CFQ18W/GX24Q	0.19	22	98%	0°F
CFRR6V18QU-277V	CFQ18W/GX24Q	0.08	22	98%	0°F
CFRR6V26QNE1	CFQ26W/GX24Q	0.40	28	50%	0°F
CFRR6V26QU-120V	CFQ26W/GX24Q	0.32	28	98%	0°F
CFRR6V26QU-277V	CFQ26W/GX24Q	0.014	28	98%	0°F
CFRR6V26QDA1	CFQ26W/GX24Q	0.45		50%	50°F

LUMINAIRE WATTAGE CONSUMPTION COMPARISON



©2012 Philips Omega
All rights reserved.

776 South Green Street • Tupelo, MS 38804
p. 800.234.1890 • f. 662.841.5501
www.omegalighting.com
Canadian Division
189 Bullock Drive • Markham, Ontario L3P 1W4
p. 905.294.9570 • f. 905.294.9811

Contact Factory for Additional Configurations.
Specifications are subject to change without notice.



Some luminaires use fluorescent or high intensity discharge (HID) lamps that contain small amounts of mercury. Such lamps are labeled, "Contain Mercury" and/or the symbol "HG". Lamps that contain mercury must be disposed of in accordance with local requirements. Information regarding lamp recycling and disposal can be found at www.lamprecycle.org