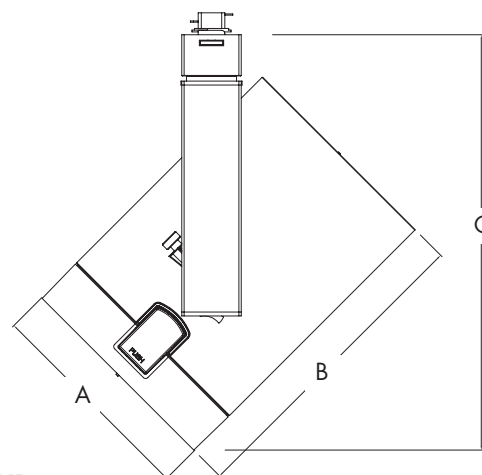


CT7566

Capri Track - Electronic HID

Catalog Number: _____
 Type: _____
 Project: _____

TR2-12



LEGEND

Diameter: A = 5-7/16" (138mm)
 Length: B = 7-7/8" (200mm)
 Max. Height: C = 10-1/2" (266 mm)

PRODUCT DESCRIPTION

Die-cast aluminum lamp housing with an extruded vertical ballast housing. The CT7566 is designed for use with Philips Lightolier's Capri Track two circuit/ two neutral, 120V/20A track lighting system or monopoint canopy.

CATALOG SYSTEM & OPTIONS

CATALOG NO.	FINISH	ACCESSORIES (ordered separately)	AVAILABLE LAMP SOURCE
CT7566	W - white BK - black SL - silver	CF22- CF28 see filter/lens chart on reverse side of sheet CL72 & CL75 - louvers CB72 - barndoor (available in white(W), black (BK) and silver(SL))	PAR38 CMH 70W max

SPECIFICATIONS

Lamp Housing - Die-cast aluminum housing, tilts vertically to 180° and rotates horizontally up to 360°. The housing comes standard with a toolless, front lens ring hinge and latch system for easy access to the lamp and accessories.

Ballast/Ballast Housing - Standard electronic ballast designed for optimum performance and color uniformity. The extruded aluminum housing is vented for heat dissipation.

Swiss Movement Aiming System - The silk screened, Swiss movement aiming system "clicks" into place to ensure precise aiming up to 180°. Attached set screw securely locks the lamp housing into the preferred aiming position.

Captive Media Ring - The smooth, black captive media ring holds up to three media, a louver and two lenses, intact during relamping or maintenance.

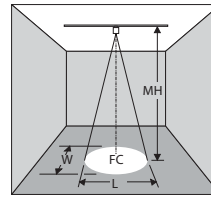
Finishes - Wet coat finish is available in white (W), black (BK) and silver (SL).

On/Off Switch - Integral switch located on the bottom of the ballast housing permits safe interruption of power to the individual luminaire for routine relamping and maintenance.

ETL and c/ETL Listed

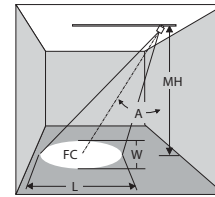
MH	L	D	CBCP	FC	W	C
Distance from the fixture to illuminated surface	Beam length in feet	Distance from the fixture to the wall	Center beam candle-power	Footcandle level at center of beam	Beam width in feet	Distance to the center of the beam from the ceiling

0° Horizontal



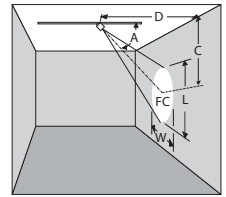
$$FC = CBCP / MH^2$$

30°, 45°, or 60° Horizontal



$$FC = CBCP / MH^2$$

30°, 45°, or 60° Vertical



$$FC = CBCP / D^2$$

PAR20 HALOGEN LAMPS

	BEAM Spread	CBCP	Rated Life	horizontal aiming angles								vertical aiming angles									
				0°				30°				30°				45°					
				MH	FC	L	W	MH	FC	L	W	D	C	FC	L	W	D	C	FC	L	W
50W PAR20 spot	10°	4600	3000	8	72	1.4	1.4	8	47	1.9	1.6	3	5.0	64	2.1	1.0	3	3.0	181	1.1	0.7
				10	46	1.7	1.7	10	30	2.3	2.0	4	6.9	36	2.9	1.4	4	4.0	102	1.4	1.0
				12	32	2.1	2.1	12	21	2.8	2.4	5	8.7	23	3.6	1.7	5	5.0	65	1.8	1.2
50W PAR20 flood	30°	1200	3000	5	48	2.7	2.7	5	31	3.7	3.1	3	5.2	17	8.2	3.2	3	3.0	47	3.5	2.3
				6	33	3.2	3.2	6	22	4.4	3.7	4	6.9	9	10.9	4.3	4	4.0	27	4.6	3.0
				7	25	3.8	3.8	7	16	5.1	4.3	5	8.7	6	13.7	5.4	5	5.0	17	5.8	3.8

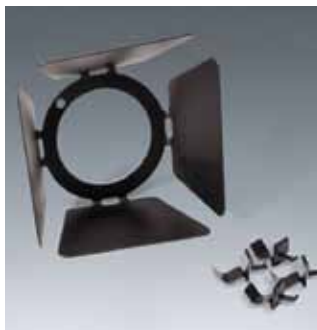
COLOR FILTERS & LENSES



- CF22** Spread Lens, 4-3/4" Dia.
- CF23** Blue Filter, 4-3/4" Dia.
- CF24** Red Filter, 4-3/4" Dia.
- CF25** Green Filter, 4-3/4" Dia.
- CF26** Amber Filter, 4-3/4" Dia.
- CF27** UV Filter, 4-3/4" Dia.
- CF28** Pink Filter, 4-3/4" Dia.

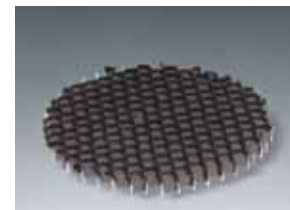
Note: UV Filters are available in other sizes. Consult factory.

BARNDOORS



Individually adjustable blades are used to create lamp shielding and tailor the size of a beam pattern to the illuminated area. Blades can be used to create horizontal cut-off (to keep light out of the viewer's eyes) or vertical cutoff (to stop light at the edge of a wall panel or at the intersection of two walls).
Finishes: W, SL, BK

CB72 Barn Door Set, 4-7/8" Dia. frame



CL72 Honeycomb Louver, 4-3/8" Dia.
CL75 Cube Louver, 4-3/8" Dia.



© 2013 Koninklijke Philips N.V. (Royal Philips). All rights reserved.
Specifications are subject to change without notice.
www.philips.com/luminaires

TR2-12 06/13 page 2 of 2

Philips Lighting Company
200 Franklin Square Drive
Somerset, NJ 08873
Phone: 855-486-2216

Philips Lighting Company
281 Hillmount Road
Markham ON, Canada L6C 2S3
Phone: 800-668-9008