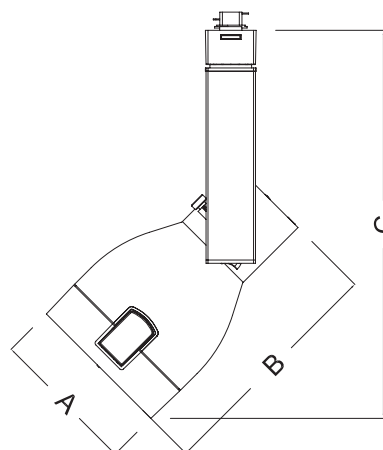
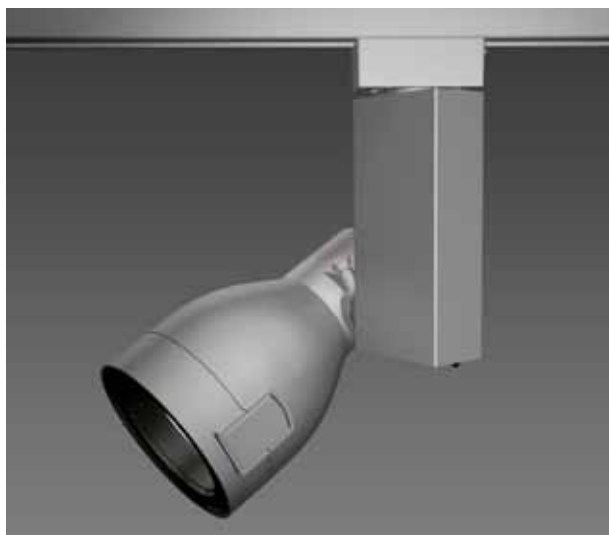


# CT7167/CT7168

## Capri Track - Electronic HID

Catalog Number: \_\_\_\_\_  
Type: \_\_\_\_\_  
Project: \_\_\_\_\_

TR2-23



### LEGEND

Diameter: A = 4-1/2" (114mm)

Length: B = 7-1/4" (184mm)

Max. Height: C = 12-1/4" (311mm)

## PRODUCT DESCRIPTION

Die-cast aluminum lamp housing with an extruded vertical ballast housing. The CT7167/CT7168 is designed for use with Philips Lightolier's Capri Track two circuit/two neutral; 120V/20A track lighting system and monopoint canopy.

## CATALOG SYSTEM & OPTIONS

CATALOG NO.	FINISH	ACCESSORIES (ordered separately)	AVAILABLE LAMP SOURCE/WATTAGES
<b>CT7167</b> <b>CT7168</b>	<b>W</b> - white <b>BK</b> - black <b>SL</b> - silver	<b>CF13- CH18</b> see filter/lens chart on reverse side of sheet <b>CL71 &amp; CL74</b> - louvers <b>CB71</b> - barndoor (available in white(W), black (BK) and silver(SL)	<b>PAR20 CMH</b> 20W max (CT7167) <b>PAR20 CMH</b> 39W max (CT7168)

## SPECIFICATIONS

**Lamp Housing** - Die-cast aluminum housing, tilts vertically to 180° and rotates horizontally up to 360°. The housing comes standard with a toolless, front lens ring hinge and latch system for easy access to the lamp and accessories.

**Ballast/Ballast Housing** - Standard electronic ballast designed for optimum performance and color uniformity. The extruded aluminum housing is a vented for heat dissipation.

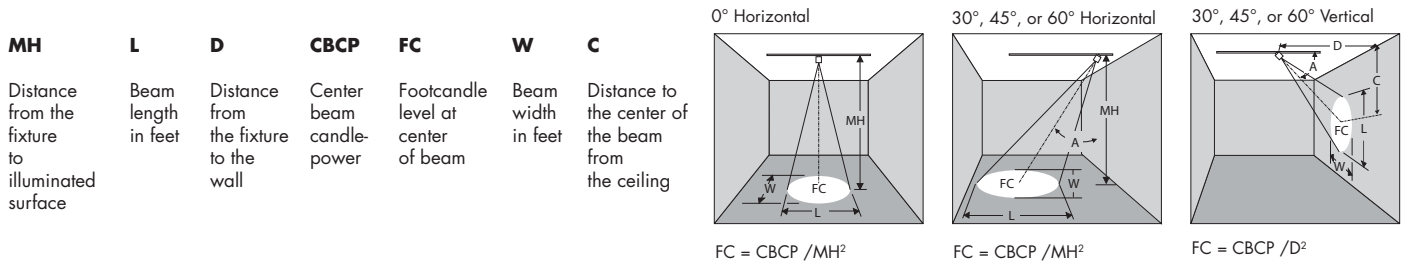
**Swiss Movement Aiming System** - The silk screened Swiss movement aiming system "clicks" into place to ensure precise aiming up to 180°. Attached set screw securely locks the lamp housing into the preferred aiming position.

**Captive Media Ring** - The smooth, black captive media ring holds up to three media, a louver and two lenses intact during relamping or maintenance.

**Finishes** - Wet coat finish is available in white (W), black (BK) and silver (SL).

**On/Off Switch** - Integral switch located on the bottom of the ballast housing permits safe interruption of power to the individual luminaire for routine relamping and maintenance.

**ETL and c/ETL Listed**

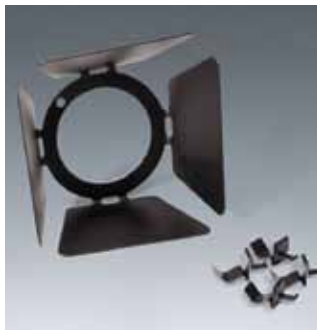
**CMH PAR20 / METAL HALIDE LAMPS**

	BEAM Spread	CBCP	Rated Life	horizontal aiming angles								vertical aiming angles									
				0°				30°				30°					45°				
				MH	FC	L	W	MH	FC	L	W	D	C	FC	L	W	D	C	FC	L	W
<b>20W PAR20 spot</b>	8°	13000	7500	8	203	1.1	1.1	8	132	1.5	1.3	3	5.2	181	1.7	0.8	4	4.0	287	1.1	0.8
				10	130	1.4	1.4	10	84	1.9	1.6	4	6.9	102	2.3	1.1	5	5.0	184	1.4	1.0
				12	90	1.7	1.7	12	59	2.2	1.9	5	8.7	65	2.8	1.4	6	6.0	128	1.7	1.2
<b>20W PAR20 flood</b>	25°	3750	7500	6	104	2.7	2.7	6	68	3.6	3.1	2	3.5	117	4.2	1.8	3	3.0	147	2.8	1.9
				8	59	3.5	3.5	8	38	4.8	4.1	3	5.2	52	6.2	2.7	4	4.0	83	3.7	2.5
				10	38	4.4	4.4	10	24	6.0	5.1	4	6.9	29	8.3	3.5	5	5.0	53	4.7	3.1
<b>39W PAR20 spot</b>	10°	22000	10000	8	344	1.1	1.1	8	132	1.5	1.3	3	5.2	181	1.7	0.8	4	4.0	287	1.1	0.8
				10	220	1.4	1.4	10	84	1.9	1.6	4	6.9	102	2.3	1.1	5	5.0	184	1.4	1.0
				12	153	1.7	1.7	12	59	2.2	1.9	5	8.7	65	2.8	1.4	6	6.0	128	1.7	1.2
<b>39W PAR20 flood</b>	25°	7500	10000	6	208	2.7	2.7	6	135	3.6	3.1	2	3.5	234	4.2	1.8	3	3.0	295	2.8	1.9
				8	117	3.5	3.5	8	76	4.8	4.1	3	5.2	104	6.2	2.7	4	4.0	166	3.7	2.5
				10	75	4.4	4.4	10	49	6.0	5.1	4	6.9	59	8.3	3.5	5	5.0	106	4.7	3.1

**COLOR FILTERS & LENSES**

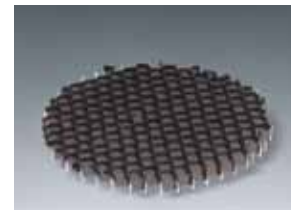
- CF13** Blue Filter, 3-1/4" Dia.
- CF14** Red Filter, 3-1/4" Dia.
- CF15** Green Filter, 3-1/4" Dia.
- CF16** Amber Filter, 3-1/4" Dia.
- CF17** UV Filter, 3-1/4" Dia.
- CF18** Spread Lens, 3-1/4" Dia.

Note: UV Filters are available in other sizes. Consult factory.

**BARNDOORS**

Individually adjustable blades are used to create lamp shielding and tailor the size of a beam pattern to the illuminated area. Blades can be used to create horizontal cut-off (to keep light out of the viewer's eyes) or vertical cutoff (to stop light at the edge of a wall panel or at the intersection of two walls).  
Finishes: W, SL, BK

**CB71** Barn Door Set, 3-7/8" Dia. frame



- CL71** Honeycomb Louver, 3-3/8" Dia.
- CL74** Cube Louver, 3-3/8" Dia.



© 2013 Koninklijke Philips N.V. (Royal Philips). All rights reserved.  
Specifications are subject to change without notice.  
[www.philips.com/luminaires](http://www.philips.com/luminaires)

TR2-23 06/13 page 2 of 2

Philips Lighting Company  
200 Franklin Square Drive  
Somerset, NJ 08873  
Phone: 855-486-2216

Philips Lighting Company  
281 Hillmount Road  
Markham ON, Canada L6C 2S3  
Phone: 800-668-9008