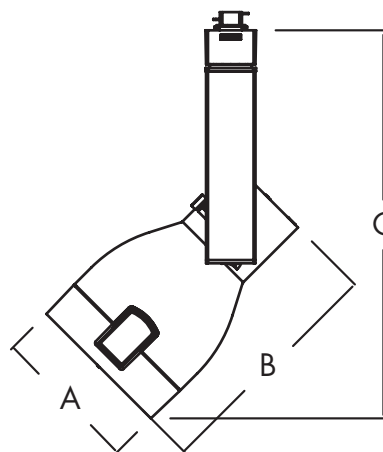
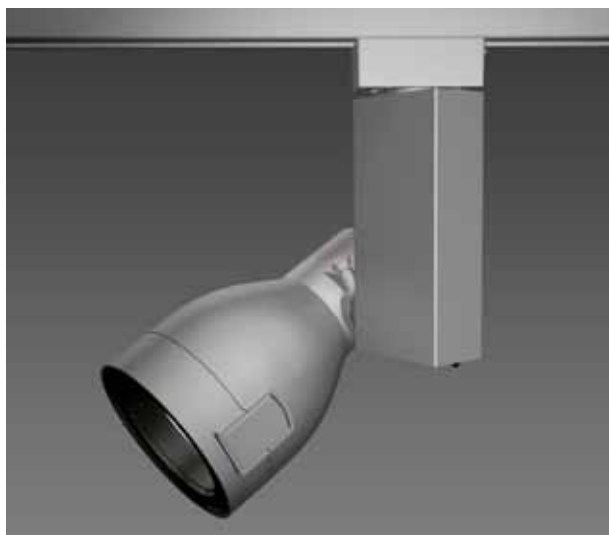


# CT7150/CT7151

## Capri Track - Electronic HID

Catalog Number: \_\_\_\_\_  
 Type: \_\_\_\_\_  
 Project: \_\_\_\_\_

TR2-25



### LEGEND

Diameter: A = 4-1/2" (114mm)  
 Length: B = 7-1/4" (184mm)  
 Max. Height: C = 12-1/4" (311mm)

## PRODUCT DESCRIPTION

Die-cast aluminum lamp housing with an extruded vertical ballast housing. The CT7150/CT7151 is designed for use with Philips Lightolier's Capri Track two circuit/two neutral; 120V/20A track lighting system and monopoint canopy.

## CATALOG SYSTEM & OPTIONS

CATALOG NO.	FINISH	DISTRIBUTION	ACCESSORIES (ordered separately)	AVAILABLE LAMP SOURCE/WATTAGES
<b>CT7150</b> <b>CT7151</b>	<b>W</b> - white <b>BK</b> - black <b>SL</b> - silver	<b>S</b> - spot <b>M</b> - medium <b>F</b> - flood	<b>CF13- CH18</b> see filter/lens chart on reverse side of sheet  <b>CL71 &amp; CL74</b> - louvers  <b>CB71</b> - barndoor (available in white (W), black(BK) and silver(SL))	<b>T4 CMH; G8.5 base</b> 39W max (CT7150)  <b>T4 CMH; G8.5 base</b> 70W max (CT7151)

## SPECIFICATIONS

**Lamp Housing** - Die-cast aluminum housing, tilts vertically to 180° and rotates horizontally up to 360°. The housing comes standard with a toolless, front lens ring hinge and latch system for easy access to the lamp and accessories.

**Ballast/Ballast Housing** - Standard electronic ballast designed for optimum performance and color uniformity. The extruded aluminum housing is vented for heat dissipation.

**Swiss Movement Aiming System** - The silk screened, Swiss movement aiming system "clicks" into place to ensure precise aiming up to 180°. Attached set screw securely locks the lamp housing into the preferred aiming position.

**Captive Media Ring** - The smooth, black captive media ring holds up to three media, a louver and two lenses, intact during relamping or maintenance.

**Safety Lens** - Tempered glass lens meets and exceeds ETL safety standards for ceramic metal halide lamps.

**Finishes** - Wet coat finish is available in white (W), black (BK) and silver (SL).

**On/Off Switch** - Integral switch located on the bottom of the ballast housing permits safe interruption of power to the individual luminaire for routine relamping and maintenance.

**Reflectors** - Three reflector options, spot, medium and flood, provide precise beam spread control.

**ETL and c/ETL Listed**

Consult factory for photometrics.

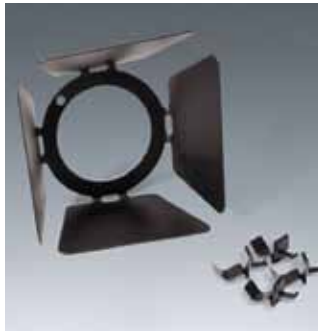
## COLOR FILTERS & LENSES



- CF13** Blue Filter, 3-1/4" Dia.
- CF14** Red Filter, 3-1/4" Dia.
- CF15** Green Filter, 3-1/4" Dia.
- CF16** Amber Filter, 3-1/4" Dia.
- CF17** UV Filter, 3-1/4" Dia.
- CF18** Spread Lens, 3-1/4" Dia.

Note: UV Filters are available in other sizes.  
Consult factory.

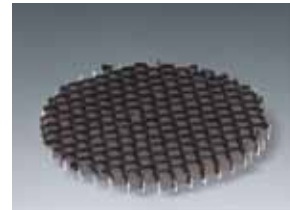
## BARNDOORS



Individually adjustable blades are used to create lamp shielding and tailor the size of a beam pattern to the illuminated area. Blades can be used to create horizontal cut-off (to keep light out of the viewer's eyes) or vertical cutoff (to stop light at the edge of a wall panel or at the intersection of two walls).

Finishes: W, SL, BK

- CB71** Barn Door Set, 3-7/8" Dia. frame



- CL71** Honeycomb Louver, 3-3/8" Dia.
- CL74** Cube Louver, 3-3/8" Dia.



© 2013 Koninklijke Philips N.V. (Royal Philips). All rights reserved.  
Specifications are subject to change without notice.  
[www.philips.com/luminaires](http://www.philips.com/luminaires)

TR2-25 06/13 page 2 of 2

Philips Lighting Company  
200 Franklin Square Drive  
Somerset, NJ 08873  
Phone: 855-486-2216

Philips Lighting Company  
281 Hillmount Road  
Markham ON, Canada L6C 2S3  
Phone: 800-668-9008