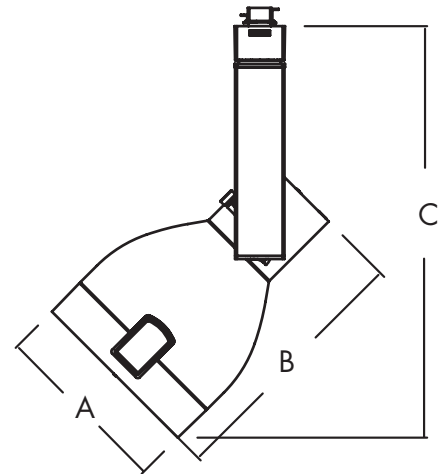
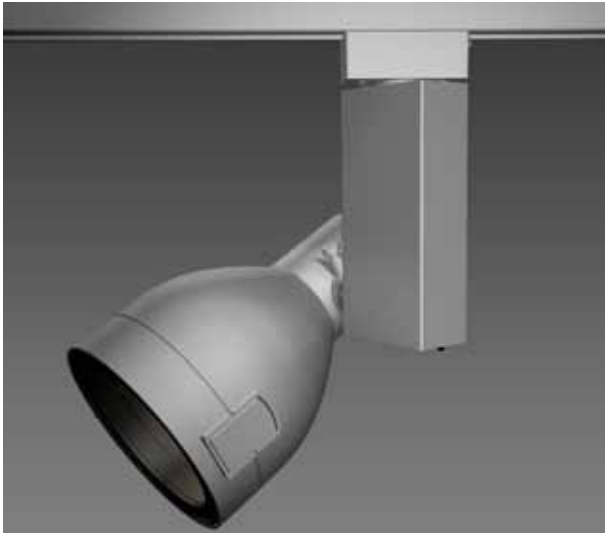


# CT7266

## Capri Track - Electronic HID

Catalog Number: \_\_\_\_\_  
 Type: \_\_\_\_\_  
 Project: \_\_\_\_\_

TR2-27



### LEGEND

Diameter: A = 5-7/16" (138mm)  
 Length: B = 7-7/8" (200mm)  
 Max. Height: C = 12-15/16" (328mm)

## PRODUCT DESCRIPTION

Die-cast aluminum lamp housing with an extruded vertical ballast housing. The CT7266 is designed for use with Philips Lightolier's Capri Track two circuit/two neutral; 120V/20A track lighting system and monopoint canopy.

## CATALOG SYSTEM & OPTIONS

CATALOG NO.	FINISH	ACCESSORIES (ordered separately)	AVAILABLE LAMP SOURCE
CT7266	W - white BK - black SL - silver	CF22- CF28 see filter/lens chart on reverse side of sheet  CL72 & CL75 - louvers  CB72 - barndoor (available in white(W), black (BK) and silver(SL)	PAR38 CMH 70W max

## SPECIFICATIONS

**Lamp Housing** - Die-cast aluminum housing, tilts vertically to 180° and rotates horizontally up to 360°. The housing comes standard with a toolless, front lens ring hinge and latch system for easy access to the lamp and accessories.

**Ballast/Ballast Housing** - Standard electronic ballast designed for optimum performance and color uniformity. The extruded aluminum housing is vented for heat dissipation.




**Swiss Movement Aiming System** - The silk screened Swiss movement aiming system "clicks" into place to ensure precise aiming up to 180°. Attached set screw securely locks the lamp housing into the preferred aiming position.

**Captive Media Ring** - The smooth, black captive media ring holds up to three media, a louver and two lenses intact during relamping or maintenance.

**Finishes** - Wet coat finish is available in white (W), black (BK) and silver (SL).

**On/Off Switch** - Integral switch located on the bottom of the ballast housing permits safe interruption of power to the individual luminaire for routine relamping and maintenance.

**ETL and c/ETL Listed**

MH	L	D	CBCP	FC	W	C	0° Horizontal	30°, 45°, or 60° Horizontal	30°, 45°, or 60° Vertical
Distance from the fixture to illuminated surface	Beam length in feet	Distance from the fixture to the wall	Center beam candle-power	Footcandle level at center of beam	Beam width in feet	Distance to the center of the beam from the ceiling			
							$FC = CBCP / MH^2$	$FC = CBCP / MH^2$	$FC = CBCP / D^2$

## CMH PAR38 / METAL HALIDE LAMPS

	BEAM Spread	CBCP	Rated Life	horizontal aiming angles								vertical aiming angles									
				0°				30°				30°					45°				
				MH	FC	L	W	MH	FC	L	W	D	C	FC	L	W	D	C	FC	L	W
<b>70W PAR38 spot</b>	15°	50000	12000	15	222	3.9	3.9	10	325	3.5	3	5	8.7	250	5.6	2.6	8	8	276	4.3	3
				20	125	5.3	5.3	15	144	5.3	4.6	8	13.9	98	8.9	4.2	12	12	123	6.4	4.5
				25	80	6.6	6.6	20	81	7.1	6.1	11	19.1	52	12.2	5.8	16	16	69	8.6	6
<b>70W PAR38 flood</b>	26°	18000	12000	8	281	3.5	3.5	7	239	4.2	3.6	3	5.2	250	6.2	2.7	5	5	255	4.7	3.1
				12	125	5.3	5.3	10	117	6	5.1	4	6.9	141	8.3	3.5	7	7	130	6.5	4.4
				16	70	7.1	7.1	13	69	7.8	6.7	5	8.7	90	10.4	4.4	9	9	79	8.4	5.6

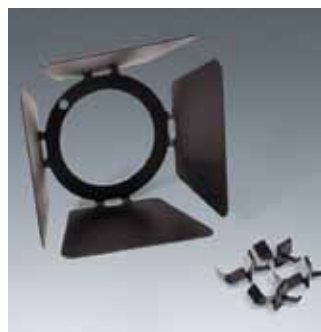
## COLOR FILTERS & LENSES



- CF22** Spread Lens, 4-3/4" Dia.  
**CF23** Blue Filter, 4-3/4" Dia.  
**CF24** Red Filter, 4-3/4" Dia.  
**CF25** Green Filter, 4-3/4" Dia.  
**CF26** Amber Filter, 4-3/4" Dia.  
**CF27** UV Filter, 4-3/4" Dia.  
**CF28** Pink Filter, 4-3/4" Dia.

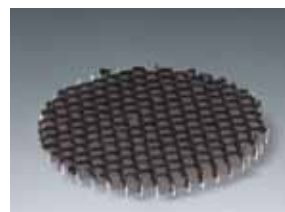
Note: UV Filters are available in other sizes.  
Consult factory.

# BARNDOORS



Individually adjustable blades are used to create lamp shielding and tailor the size of a beam pattern to the illuminated area. Blades can be used to create horizontal cut-off (to keep light out of the viewer's eyes) or vertical cutoff (to stop light at the edge of a wall panel or at the intersection of two walls).  
Finishes: W, SL, BK

- CB72** Barn Door Set, 4-7/8" Dia. frame



- CL72** Honeycomb Louver, 4-3/8" Dia.  
**CL75** Cube Louver, 4-3/8" Dia.



© 2013 Koninklijke Philips N.V. (Royal Philips). All rights reserved.  
Specifications are subject to change without notice.  
[www.philips.com/luminaires](http://www.philips.com/luminaires)

TR2-27 06/13 page 2 of 2

Philips Lighting Company  
200 Franklin Square Drive  
Somerset, NJ 08873  
Phone: 855-486-2216

Philips Lighting Company  
281 Hillmount Road  
Markham ON, Canada L6C 2S3  
Phone: 800-668-9008