

CT7435

Capri Track - Line Voltage

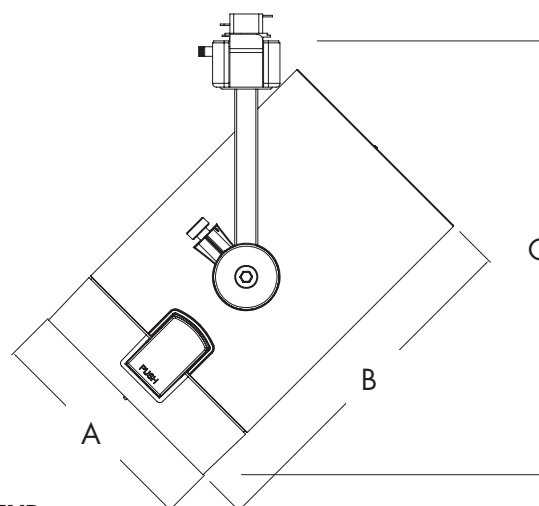
Catalog Number: _____
 Type: _____
 Project: _____

TR2-3



PRODUCT DESCRIPTION

Die-cast aluminum lamp housing with a mounting stem profile. The CT7435 is designed for use with Philips Lightolier's Capri Track two circuit/ two neutral, 120V/20A track lighting system or monopoint canopy.



LEGEND

Diameter: A = 4-1/2" (115mm)
 Length: B = 7-1/4" (184mm)
 Max. Height: C = 9" (228mm)

CATALOG SYSTEM & OPTIONS

CATALOG NO.	FINISH	ACCESSORIES (ordered separately)	AVAILABLE LAMP SOURCE
CT7435	W - white BK - black SL - silver	CF13- CF18 see filter/lens chart on reverse side of sheet CL71 & CL74 - louvers CB71 - barndoors (available in white(W), black (BK) and silver(SL)	PAR30 (short neck) 75W max

SPECIFICATIONS

Lamp Housing - Die-cast aluminum housing, tilts vertically to 180° and rotates horizontally up to 360°. The housing comes standard with a toolless, front lens ring hinge and latch system for easy access to the lamp and accessories.

Swiss Movement Aiming System - The silk screened Swiss movement aiming system "clicks" into place to ensure precise aiming up to 180°. Attached set screw securely locks the lamp housing into the preferred aiming position.

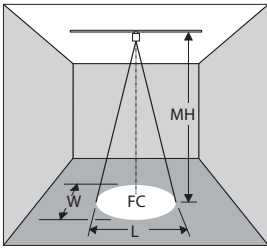
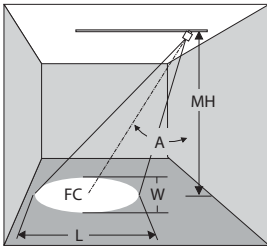
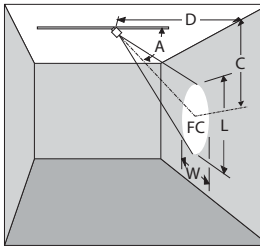
Captive Media Ring - The smooth, black captive media ring holds up to three media, a louver and two lenses intact during relamping or maintenance.

Finishes - Wet coat finish is available in white (W), black (BK) and silver (SL).

On/Off Switch - Integral switch on the track plug housing permits safe interruption of power to the individual luminaire for routine relamping and maintenance.

Dimming - Dimming is available on the Capri Track system; consult factory for dimming manufacturer compatibility.

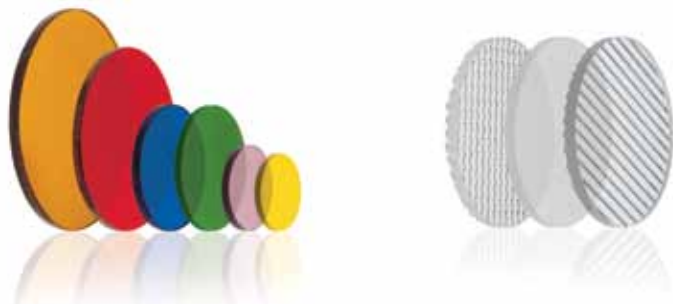
ETL and c/ETL Listed

MH	L	D	CBCP	0° Horizontal	30°, 45°, or 60° Horizontal	30°, 45°, or 60° Vertical
Distance from the fixture to illuminated surface	Beam length in feet	Distance from the fixture to the wall	Center beam candlepower			
FC	W	C		$FC = CBCP / MH^2$	$FC = CBCP / MH^2$	$FC = CBCP / D^2$
Footcandle level at center of beam	Beam width in feet	Distance to the center of the beam from the ceiling				

PAR30 (short neck) HALOGEN LAMPS

				horizontal aiming angles								vertical aiming angles									
				0°				30°				30°					45°				
				MH	FC	L	W	MH	FC	L	W	D	C	FC	L	W	D	C	FC	L	W
75W PAR30 spot	BEAM Spread 9°	CBCP 15400	Rated Life 2500	8	219	1.3	1.3	7	186	1.5	1.3	3	5.2	194	1.9	0.9	5	5	196	1.6	1.1
				12	97	1.9	1.9	10	91	2.1	1.8	4	6.9	109	2.6	1.3	7	7	125	2.3	1.6
				16	55	2.5	2.5	13	54	2.7	2.4	5	8.7	70	3.2	1.6	9	9	61	2.9	2
75W PAR30 narrow flood	25°	4000	2500	8	50	4.3	4.3	7	42	5.1	4.3	3	5.2	44	8.2	3.2	5	5	45	5.8	3.8
				10	32	5.4	5.4	9	26	6.6	5.6	4	6.9	25	10.9	4.3	7	7	23	8.1	5.3
				12	22	6.4	6.4	11	17	8.1	6.8	5	8.7	16	13.7	5.4	9	9	14	10.4	6.6
75W PAR30 flood	40°	2100	2500	6	56	4.4	4.4	5	52	5.1	4.2	2	3.5	63	9.7	2.9	4	4	44	6.7	4.1
				8	31	5.8	5.8	7	27	7.1	5.9	3	5.2	28	14.5	4.4	5	5	28	8.4	5.1
				10	20	7.3	7.3	9	16	9.1	7.6	4	6.9	16	19.3	5.8	6	6	20	10.1	6.2

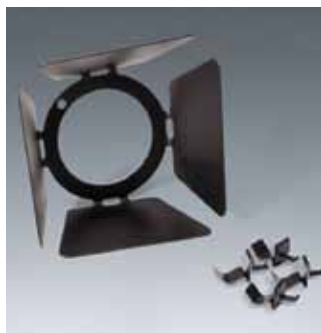
COLOR FILTERS & LENSES



- CF13** Blue Filter, 3-1/4" Dia.
- CF14** Red Filter, 3-1/4" Dia.
- CF15** Green Filter, 3-1/4" Dia.
- CF16** Amber Filter, 3-1/4" Dia.
- CF17** UV Filter, 3-1/4" Dia.
- CF18** Spread Lens, 3-1/4" Dia.

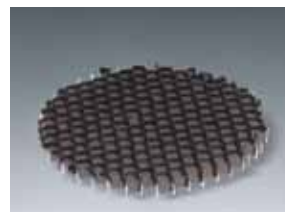
Note: UV Filters are available in other sizes. Consult factory.

BARNDOORS



Individually adjustable blades are used to create lamp shielding and tailor the size of a beam pattern to the illuminated area. Blades can be used to create horizontal cut-off (to keep light out of the viewer's eyes) or vertical cutoff (to stop light at the edge of a wall panel or at the intersection of two walls).
Finishes: W, SL, BK

- CB71** Barn Door Set, 3-7/8" Dia. frame



- CL71** Honeycomb Louver, 3-3/8" Dia.
- CL74** Cube Louver, 3-3/8" Dia.



© 2013 Koninklijke Philips N.V. (Royal Philips). All rights reserved.
Specifications are subject to change without notice.
www.philips.com/luminaires

Philips Lighting Company
200 Franklin Square Drive
Somerset, NJ 08873
Phone: 855-486-2216

Philips Lighting Company
281 Hillmount Road
Markham ON, Canada L6C 2S3
Phone: 800-668-9008