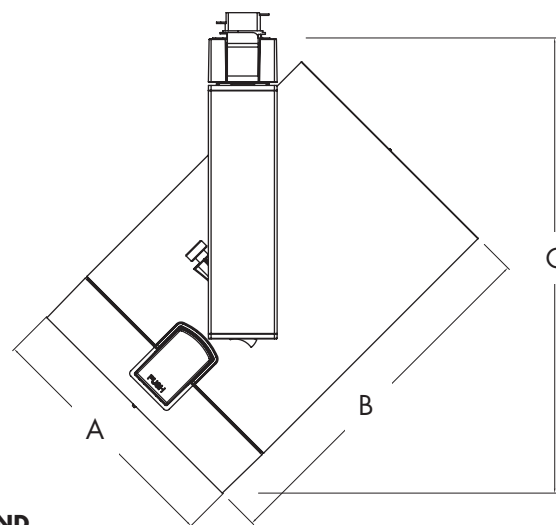


CV7512

Capri Track - Low Voltage

Catalog Number: _____
 Type: _____
 Project: _____

TR2-6



LEGEND

Diameter: A = 5-7/16" (138mm)
 Length: B = 7 -7/8" (200mm)
 Max. Height: C = 10-5/16" (262mm)

PRODUCT DESCRIPTION

Die-cast aluminum lamp housing with an extruded vertical transformer housing. The CV7512 is designed for use with Philips Lightolier's Capri Track two circuit/ two neutral, 120V/20A track lighting system or monopoint canopy.

CATALOG SYSTEM & OPTIONS

CATALOG NO.	FINISH	ACCESSORIES (ordered separately)	AVAILABLE LAMP SOURCE
CV7512	W - white BK - black SL - silver	CF22- CF28 see filter/lens chart on reverse side of sheet CL72 & CL75 - louvers CB72 - barndoor (available in white(W), black (BK) and silver(SL)	AR111 100W max

SPECIFICATIONS

Lamp Housing - Die-cast aluminum housing, tilts vertically to 180° and rotates horizontally up to 360°. The housing comes standard with a toolless, front lens ring hinge and latch system for easy access to the lamp and accessories.

Transformer/Transformer Housing - Standard 12V integral electronic transformer is housed in an extruded aluminum housing is vented for heat dissipation.

Swiss Movement Aiming System - The silk screened, Swiss movement aiming system "clicks" into place to ensure precise aiming up to 180°. Attached set screw securely locks the lamp housing into the preferred aiming position.

Captive Media Ring - The smooth, black captive media ring holds up to three media, a louver and two lenses, intact during relamping or maintenance.

Safety Lens - Tempered glass lens meets and exceeds ETL safety standards.

Finishes - Wet coat finish is available in white (W), black (BK) and silver (SL).

On/Off Switch - Integral switch on the bottom of the transformer housing permits safe interruption of power to the individual luminaire for routine relamping and maintenance.

ETL and c/ETL Listed

AR111 HALOGEN LAMPS

	BEAM Spread	CBCP	Rated Life	horizontal aiming angles								vertical aiming angles									
				0°				30°				30°					45°				
	4°	50000	3000	MH	FC	L	W	MH	FC	L	W	D	C	FC	L	W	D	C	FC	L	W
50W AR111 narrow spot				15	222	1.3	1.3	10	325	1.2	1.0	5	8.7	250	1.8	0.9	8	8.0	276	1.4	1.0
				20	125	1.7	1.7	15	144	1.7	1.5	8	13.9	98	2.6	1.4	12	12.0	123	2.1	1.5
				25	80	2.2	2.2	20	81	2.3	2.0	11	19.1	52	3.9	1.9	16	16.0	69	2.8	2.0
50W AR111 spot	8°	20000	3000	10	200	1.7	1.7	8	203	1.9	1.6	4	6.9	156	2.9	1.4	6	6.0	196	2.1	1.5
				15	89	2.6	2.6	12	90	2.8	2.8	6	10.4	69	4.3	2.1	9	9.0	87	3.2	2.2
				20	50	3.5	3.5	16	51	3.7	3.2	8	13.9	39	5.7	2.8	12	12.0	49	4.2	3.0
50W AR111 flood	25°	3500	3000	6	83	3.2	3.2	5	78	3.7	3.1	2	3.5	94	5.5	2.1	3	3.0	118	3.5	2.3
				8	47	4.3	4.3	7	40	5.1	4.3	3	5.2	42	8.2	3.2	5	5.0	42	5.8	3.6
				10	30	5.4	5.4	9	24	6.6	5.6	4	6.9	23	10.9	4.3	7	7.0	22	8.1	5.3
75W AR111 spot	8°	30000	3000	10	250	1.7	1.7	8	254	1.9	1.6	4	6.9	195	2.9	1.4	6	6	246	2.1	1.5
				15	111	2.6	2.6	12	113	2.8	2.4	6	10.4	87	4.3	2.1	9	9	109	3.2	2.2
				20	63	3.5	3.5	16	63	3.7	3.2	8	13.9	49	5.7	2.8	12	12	61	4.2	3
75W AR111 flood	25°	5300	3000	6	125	3.2	3.2	5	117	3.7	3.1	2	3.5	141	5.5	2.1	3	3	177	3.5	2.3
				8	70	4.3	4.3	7	60	5.1	4.3	3	5.2	63	8.2	3.2	5	5	64	5.6	3.8
				10	45	5.4	5.4	9	36	6.6	5.6	4	6.9	35	10.9	4.3	7	7	32	8.1	5.3
100W AR111 spot	8°	48000	3000																		

Consult lamp manufacturer for availability and performance data.

100W AR111 flood
25° 8500 3000

Consult lamp manufacturer for availability and performance data.

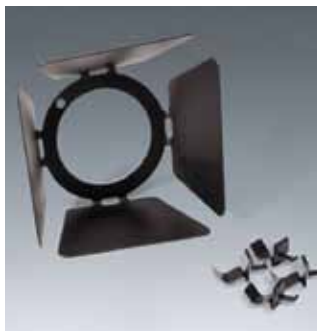
100W AR111 wide flood
45° 2800 3000

Consult lamp manufacturer for availability and performance data.

COLOR FILTERS & LENSES

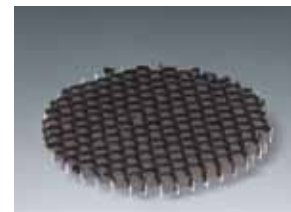
- CF22** Spread Lens, 4-3/4" Dia.
CF23 Blue Filter, 4-3/4" Dia.
CF24 Red Filter, 4-3/4" Dia.
CF25 Green Filter, 4-3/4" Dia.
CF26 Amber Filter, 4-3/4" Dia.
CF27 UV Filter, 4-3/4" Dia.
CF28 Pink Filter, 4-3/4" Dia.

Note: UV Filters are available in other sizes.
Consult factory.

BARNDOORS

Individually adjustable blades are used to create lamp shielding and tailor the size of a beam pattern to the illuminated area. Blades can be used to create horizontal cut-off (to keep light out of the viewer's eyes) or vertical cutoff (to stop light at the edge of a wall panel or at the intersection of two walls).
Finishes: W, SL, BK

CB72 Barn Door Set, 4-7/8" Dia. frame



- CL72** Honeycomb Louver, 4-3/8" Dia.
CL75 Cube Louver, 4-3/8" Dia.



© 2013 Koninklijke Philips N.V. (Royal Philips). All rights reserved.
Specifications are subject to change without notice.
www.philips.com/luminaires

TR2-6 06/13 page 2 of 2

Philips Lighting Company
200 Franklin Square Drive
Somerset, NJ 08873
Phone: 855-486-2216

Philips Lighting Company
281 Hillmount Road
Markham ON, Canada L6C 2S3
Phone: 800-668-9008