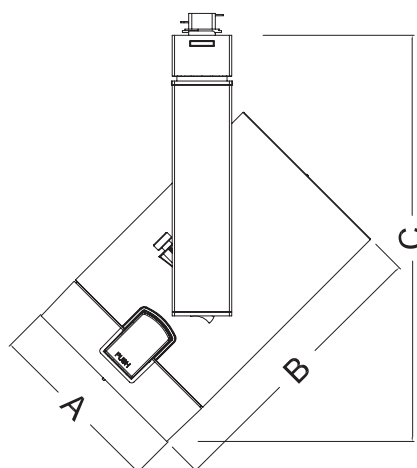


CT7472/CT7473

Capri Track - Electronic HID

Catalog Number: _____
Type: _____
Project: _____

TR2-9



LEGEND

Diameter: A = 4-1/2" (115mm)
Length: B = 7-1/4" (184mm)
Max. Height: C = 10-5/16" (262mm)

PRODUCT DESCRIPTION

Die-cast aluminum lamp housing with an extruded vertical ballast housing. The CT7472/CT7473 is designed for use with Philips Lightolier's Capri Track two circuit/ two neutral, 120V/20A track lighting system or monopoint canopy.

CATALOG SYSTEM & OPTIONS

CATALOG NO.	FINISH	ACCESSORIES (ordered separately)	AVAILABLE LAMP SOURCE/WATTAGES
CT7472 CT7473	W - white BK - black SL - silver	CF13- CF18 see filter/lens chart on reverse side of sheet CL71 & CL74 - louvers CB71 - barndoor (available in white(W), black(BK) and silver(SL))	PAR30 CMH 39W max (CT7472) PAR30 CMH 70W max (CT7473)

SPECIFICATIONS

Lamp Housing - Die-cast aluminum housing, tilts vertically to 180° and rotates horizontally up to 360°. The housing comes standard with a toolless, front lens ring hinge and latch system for easy access to the lamp and accessories.

Ballast/Ballast Housing - Standard electronic ballast designed for optimum performance and color uniformity. The extruded aluminum housing is vented for heat dissipation.

Swiss Movement Aiming System - The silk screened Swiss movement aiming system "clicks" into place to ensure precise aiming up to 180°. Attached set screw securely locks the lamp housing into the preferred aiming position.

Captive Media Ring - The smooth, black captive media ring holds up to three media, a louver and two lenses intact during relamping or maintenance.

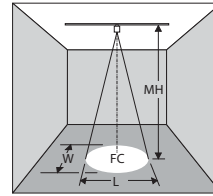
Finishes - Wet coat finish is available in white (W), black (BK) and silver (SL).

On/Off Switch - Integral switch located on the bottom of the ballast housing permits safe interruption of power to the individual luminaire for routine relamping and maintenance.

ETL and c/ETL Listed

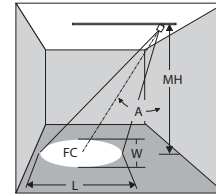
MH	L	D	CBCP	FC	W	C
Distance from the fixture to illuminated surface	Beam length in feet	Distance from the fixture to the wall	Center beam candle-power	Footcandle level at center of beam	Beam width in feet	Distance to the center of the beam from the ceiling

0° Horizontal



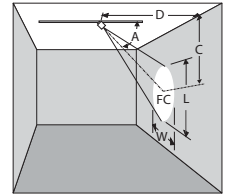
$$FC = CBCP / MH^2$$

30°, 45°, or 60° Horizontal



$$FC = CBCP / MH^2$$

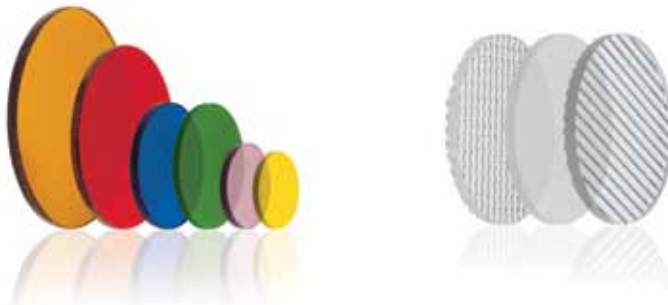
30°, 45°, or 60° Vertical



$$FC = CBCP / D^2$$

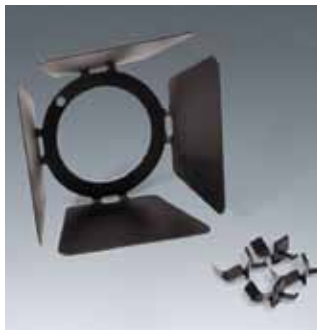
CMH PAR30 /METAL HALIDE LAMPS

	BEAM Spread	CBCP	Rated Life	horizontal aiming angles										vertical aiming angles									
				0°				30°				30°					45°						
				MH	FC	L	W	MH	FC	L	W	D	C	FC	L	W	D	C	FC	L	W		
39W PAR30 spot	10°	44000	9000	15	187	2.6	2.6	10	273	2.3	2	5	8.7	210	3.6	1.7	8	8	232	2.8	2		
				20	105	3.5	3.5	15	121	3.5	3	8	13.9	82	5.7	2.8	12	12	103	4.2	3		
				25	67	4.4	4.4	20	68	4.7	4	11	19.1	43	7.9	3.8	16	16	58	5.5	4		
39W PAR30 flood	30°	7400	9000	7	153	3.8	3.8	6	135	4.4	3.7	2	3.5	234	5.5	2.1	4	4	166	4.6	3		
				10	75	5.4	5.4	9	60	6.6	5.6	3	5.2	104	8.2	3.2	6	6	74	6.9	4.5		
				13	44	7	7	12	34	8.8	7.4	4	6.9	59	10.9	4.3	8	8	41	9.2	6.1		
70W PAR30 spot	10°	68000	9000	15	276	2.6	2.6	10	403	2.3	2	5	8.7	310	3.6	1.7	8	8	143	2	2		
				20	155	3.5	3.5	15	179	3.5	3	8	13.9	121	5.7	2.9	12	12	152	4.2	3		
				25	99	4.4	4.4	20	101	4.7	4	1	19.1	64	7.9	3.8	18	16	86	5.6	4		
70W PAR30 flood	40°	10000	9000	7	184	5.1	5.1	6	162	6.1	5	2	3.5	181	9.7	2.9	4	4	199	6.7	4.1		
				10	90	7.3	7.3	9	72	9.1	7.6	3	5.2	125	14.5	4.4	6	6	88	10.1	6.2		
				13	53	9.5	9.5	12	41	12.2	10.1	4	6.9	70	19.3	5.8	8	8	50	13.4	8.2		

COLOR FILTERS & LENSES

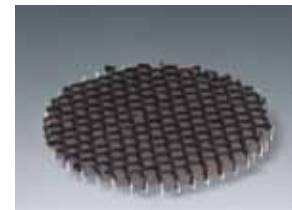
- CF13** Blue Filter, 3-1/4" Dia.
- CF14** Red Filter, 3-1/4" Dia.
- CF15** Green Filter, 3-1/4" Dia.
- CF16** Amber Filter, 3-1/4" Dia.
- CF17** UV Filter, 3-1/4" Dia.
- CF18** Spread Lens, 3-1/4" Dia.

Note: UV Filters are available in other sizes. Consult factory.

BARNDOORS

Individually adjustable blades are used to create lamp shielding and tailor the size of a beam pattern to the illuminated area. Blades can be used to create horizontal cut-off (to keep light out of the viewer's eyes) or vertical cutoff (to stop light at the edge of a wall panel or at the intersection of two walls). Finishes: W, SL, BK

- CB71** Barn Door Set, 3-7/8" Dia. frame



- CL71** Honeycomb Louver, 3-3/8" Dia.
- CL74** Cube Louver, 3-3/8" Dia.



© 2013 Koninklijke Philips N.V. (Royal Philips). All rights reserved.
Specifications are subject to change without notice.
www.philips.com/luminaires

TR2-9 06/13 page 2 of 2

Philips Lighting Company
200 Franklin Square Drive
Somerset, NJ 08873
Phone: 855-486-2216

Philips Lighting Company
281 Hillmount Road
Markham ON, Canada L6C 2S3
Phone: 800-668-9008