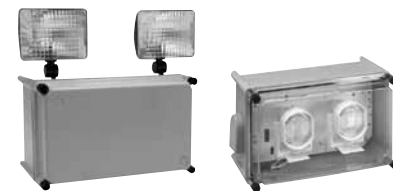


Industrial Emergency

4X Series

Harsh Environment Unit



Specifier's Reference

Project
Type
Model No.
Comments

codes and standards

- UL listed to Standard 924
- UL wet and damp location listings optional 50°F (10°C) to 104°F (40°C)
- IBC, BOCA, and OSHA illumination standard
- NFPA 101 (Life Safety Code)
- NFPA 70 (National Electric Code)
- NSF standard 2 "Splash Zone"

construction

- The 4X Series is constructed of impact resistant, fiberglass reinforced polyester.
- Housing includes two black, rectangular thermoplastic 9W lamp heads externally mounted, unless otherwise specified.
- Internally mounted white or black lamp heads available with "IH" option (up to 25 W units only).
- One-piece, molded gasket and unexposed metallic hardware prolong product life in highly corrosive areas.

installation

- Wall mount unit.

electronics

- 120/277 VAC dual voltage input with surge protected, solid state circuitry provides for a reliable charging system.
- Charging system is complete with low voltage disconnect, AC lockout, brownout protection, AC indicator lamp and test switch.
- 120 VAC - 0.15 A, 18 W.
- 277 VAC - 0.07 A, 18 W.
- Standard Location: 65°F (19°C) to 85°F (30°C).
- Damp/Wet Location: 50°F (10°C) to 104°F (40°C).

lamps

- Illumination is accomplished with lamp heads externally or internally mounted.
- The standard unit with external heads includes Chloride's "J" Series 6 or 12V lamp head in a variety of wattages.
- Units with internal heads may use the 5.4 W, 7 W, or 9 W, 6V lamp heads.
- Optional lamp heads may be selected for external mounting only.

battery

- Maintenance free sealed lead calcium or nickel cadmium battery available.
- Provides a minimum of 90 minutes emergency illumination.

warranty

- Five full year warranty on electronics and unit (excluding lamps).

Green Product Choice: 4X6L18J66B2IH

4X						2			
Series	DC Voltage	Battery	DC Wattage		Lamp Type	# Of Heads	Options ¹		
4X - 4X Series	6 - 6V 12 - 12V	L - Lead Calcium N - Nickel Cadmium	6V, Lead Calcium 18 - 18W 25 - 25W 36 - 36W 50 - 50W	6V, Nickel Cadmium 14 - 14W ³ 18 - 18W 25 - 25W 50 - 50W	**Specify for "IH" option only White J66 - 6V, 5.4W J76 - 6V, 7W J96 - 6V, 9W	2 - Two	EX - Special Input Transformer ¹ (specify voltage & frequency) IH - Internally Mounted Lamp Heads (specify head type ² , up to 25 W units only) TD1 - 120 VAC Time Delay ² TD2 - 277 VAC Time Delay ² TP - Tamperproof W - UL Wet Location Listing Z - UL Damp Location Listing		
			12V, Lead Calcium 36 - 36W 50 - 50W	12V, Nickel Cadmium 50 - 50W	Black J66B - 6V, 5.4W J76B - 6V, 7W J96B - 6V, 9W				

Accessories (Order Separately)

- EMF - External Mounting Feet
- NTP TOOL - Tamperproof Screwdriver
- PCS1 - Polycarbonate Vandal Shield
- WG5 - Wire Guard for Back Mount Units

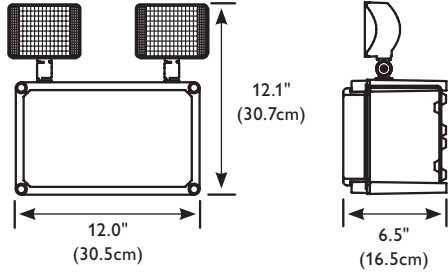
Footnotes

- ¹ Some option combinations may impact UL listing. Consult factory for specifics.
- ² 15 minute delay.
- ³ Standard lamp head 7 W, 6 VDC.

options

- EX – The special input transformer option allows for input voltage and frequencies beyond the standard 120/277 VAC, 60 Hz input.
- TD1 – The 120VAC time delay circuit causes the emergency lighting equipment to remain under battery power for a period of 15 minutes after the utility power has been restored.
- TD2 – The 277VAC time delay circuit causes the emergency lighting equipment to remain under battery power for a period of 15 minutes after the utility power has been restored.
- TP – The tamperproof option provides torx T15 hardware with center pin reject and the bit required to secure and access the equipment for future servicing.

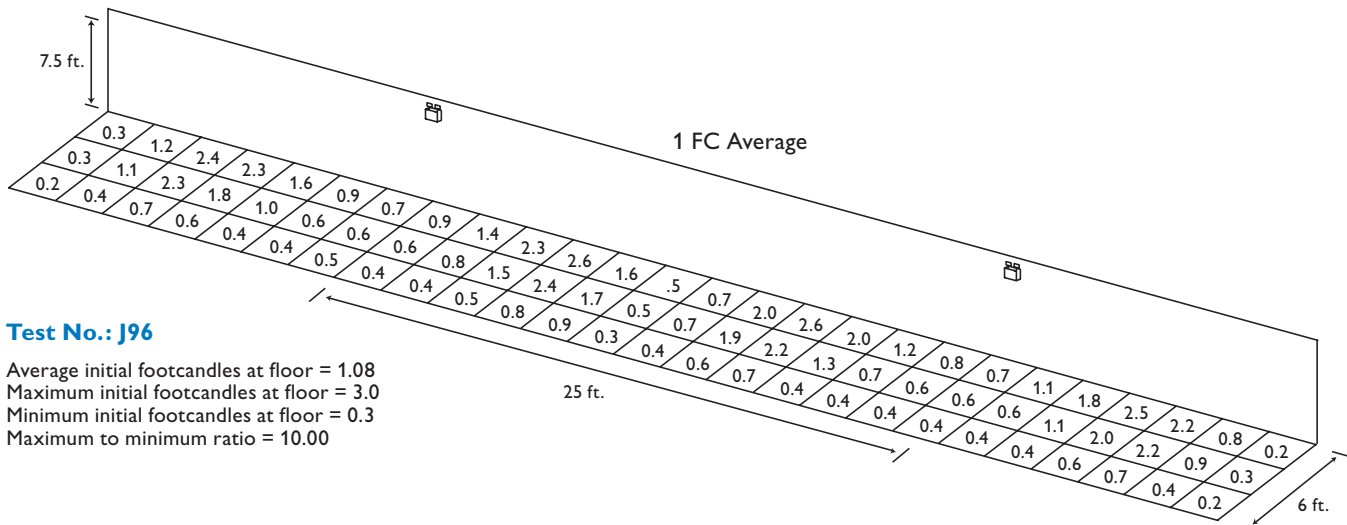
dimensions



performance

Meets Life Safety Code illumination standard; average of 1.0 FC, no point less than 0.1 FC, max to min ratio of 40:1. Assumes open space with no obstructions, mounting height: 7.5' and reflectances: 80/50/20. Analysis based on independently tested photometrics.

Wall mounted 7.5' AFF, 'J96' 6 V 9 W Tungsten Lamps Represented



Test No.: J96

Average initial footcandles at floor = 1.08
 Maximum initial footcandles at floor = 3.0
 Minimum initial footcandles at floor = 0.3
 Maximum to minimum ratio = 10.00



© 2013 Koninklijke Philips Electronics N.V. All rights reserved. Specifications are subject to change without notice.

CH-40400 03/13

Philips Lighting Company
 200 Franklin Square Drive
 Somerset, NJ 08873
 Phone: 855-486-2216

www.philips.com/luminaires

Philips Lighting Company
 281 Hillmount Road
 Markham ON, Canada L6C 2S3
 Phone: 800-668-9008

www.philips.com/luminaires