

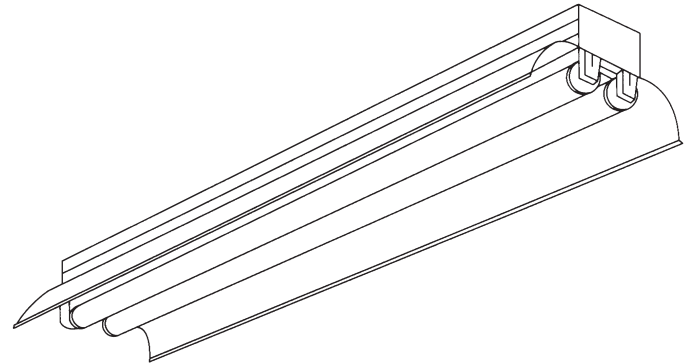
CATALOG NO. _____



TYPE NO. _____

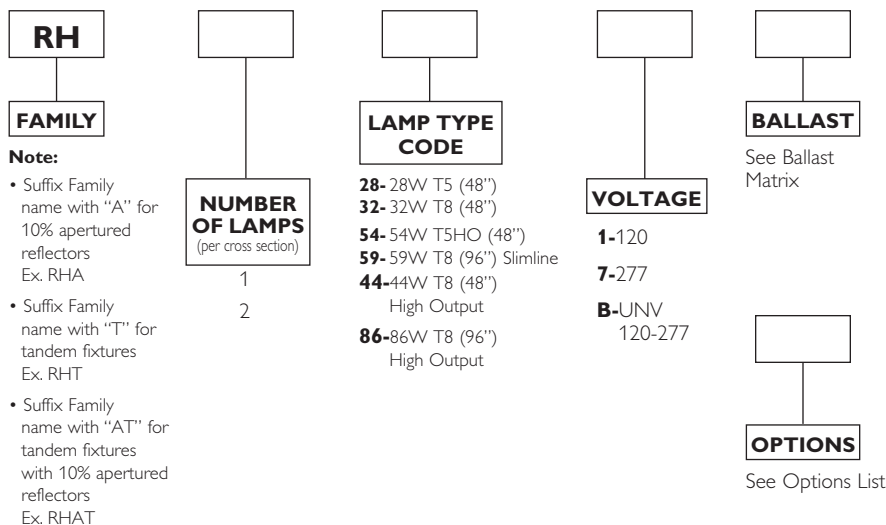
JOB NAME _____

Premium Industrial (RH)



ORDERING INFORMATION

Catalog Number: Example: RH2591Q2Y



NOTE:

Add HRW to end of catalog number for high reflectance white reflector.

PRODUCT FEATURES

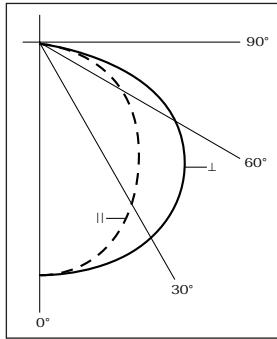
- Die-formed 4 ft. reflector with transverse ribbing for structural stability.
- Quick-release quarter-turn fasteners provide ease of installation and maintenance.
- Combination end plate/coupler assures integrity of row
- UL Damp Location labels are standard with this series.

PRODUCT AVAILABILITY

FAMILY	NOMINAL SIZE	NUMBER OF LAMPS (PER CROSS SECTION)	NUMBER OF LAMPS (PER FIXTURE)	LAMP TYPE CODE	LENGTH	WIDTH	HEIGHT
RH	4'	2	2	28, 32	48"	10 "	4 13/16"
RHA		2	2	54			
RH	8'	1	1	59	96"	10 "	4 13/16"
RHA		2	2	59			
		1	1	86			
		2	2	86			
RHT	8'	1	2	28, 32, 54	96"	10 "	4 13/16"
		2	4	28, 32, 54			
RHT	16'	1	2	59	192"	10 "	4 13/16"
		1	2	86			
RHAT	8'	1	2	28, 32, 54	96"	10 "	4 13/16"
		2	4	28, 32, 54			
RHAT	16'	1	2	59	192"	10 "	4 13/16"
		1	2	86			

Premium Industrial (RH)

TWO-LAMP PHOTOMETRIC DATA



Coefficients of Utilization

Floor Cavity Reflectance 0.20

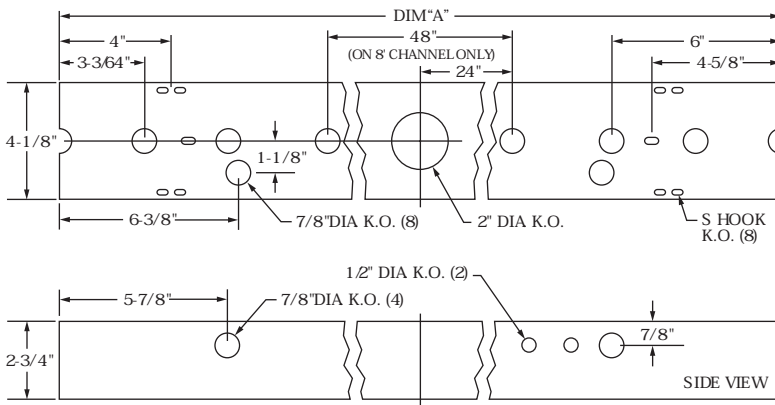
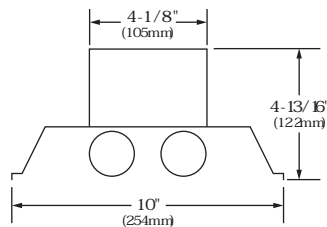
	RC RVV	80%			50%			10%		
		50	30	10	50	30	10	50	30	10
Room Cavity Ratio	1	91	88	84	86	83	81	78	76	75
	2	80	74	69	75	70	66	68	65	62
	3	70	63	57	66	60	56	60	56	53
	4	62	54	48	58	51	46	54	49	45
	5	54	45	39	50	44	39	48	43	39
	6	47	39	34	45	38	33	42	37	33
	7	42	34	29	40	34	29	38	32	28
	8	38	30	25	36	29	25	34	28	24
	9	34	26	21	33	26	21	31	25	21
	10	31	23	19	30	23	18	28	23	19

SPECIFICATIONS

Four foot reflectors are formed with transverse ribbing for structural uniformity. Quick-release quarter-turn fasteners secure all reflectors. All metal components are phosphate coated and finished in baked white enamel providing a minimum reflectance factor of 85%. All fixtures include combination end plate/couplers. Each unit is equipped with high power factor Class "P" ETL-CBM ballasts (120 volt 60 Hz is standard). Fixtures are UL-listed and bear union and UL labels.

DIMENSIONS

All KOs are 7/8" dia.
unless otherwise specified.



	DIM "A"	
4' FIXTURE	(1219mm)	48"
8' FIXTURE	(2438mm)	96"

NOTE: Do not flush mount HO or PG (VHO) units. HO units should be suspended minimum 1-1/2" from surface. PG units should be suspended minimum 6" from surface.

Dimensions and specifications subject to change without notice.