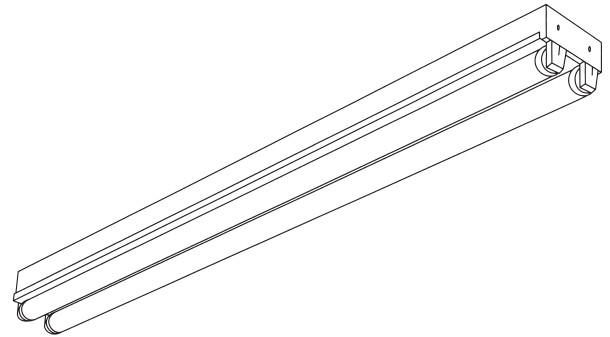


CATALOG NO. \_\_\_\_\_



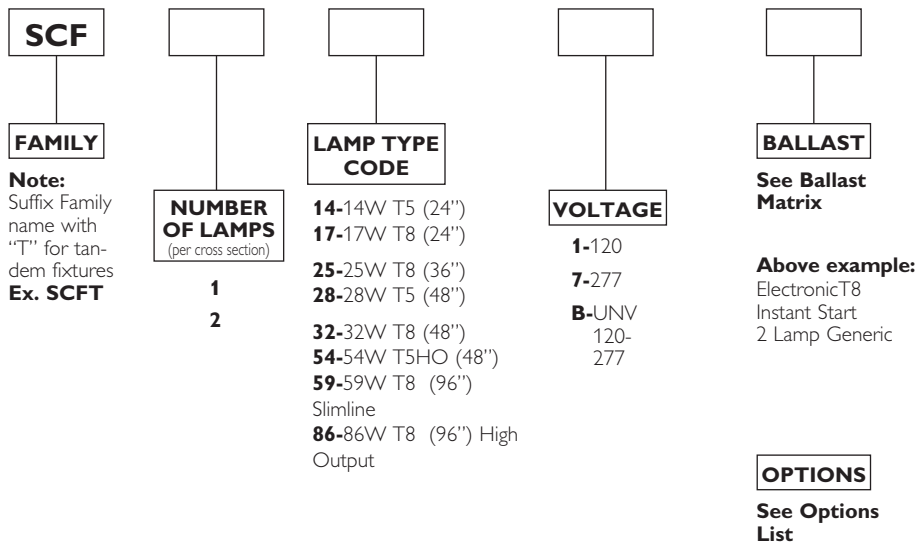
TYPE NO. \_\_\_\_\_ JOB NAME \_\_\_\_\_

# General Purpose Channel (SCF)



## ORDERING INFORMATION

Catalog Number: Example: SCF2321K2Y



## PRODUCT FEATURES

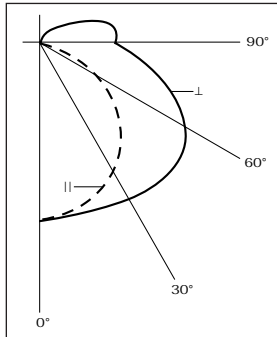
- Combination end plate/coupler can be used for individual mounting or slides into position between two fixtures, assuring integrity of row alignment.
- Optional heavy-duty 10" sleeve couplers can provide additional bracing at fixture junctures.
- Symmetric and asymmetric reflectors are available for additional downlight and directional control.
- UL Damp Location labels are standard with this series.
- All 20 watt through 40 watt fixtures are suitable for mounting on low-density cellulose fiberboard surfaces.
- 1/4 turn fastener to lock ballast cover on housing.

## PRODUCT AVAILABILITY

FAMILY	NOMINAL SIZE	NUMBER OF LAMPS (per cross section)	NUMBER OF LAMPS (per fixture)	LAMP TYPE CODE	LENGTH	WIDTH	HEIGHT
SCF	2'	2	2	14, 17, 24	24"	4 1/8"	3 7/8"
SCF	3'	2	2	21, 25, 39	36"	4 1/8"	3 7/8"
SCF	4'	2	2	28, 32, 54			
SCF	8'	1	1	59, 86	96"	4 1/8"	3 7/8"
		2	2	59, 86			
SCFT	8'	1	2	28, 32, 54	96"	4 1/8"	3 7/8"
		2	4	28, 32, 54			
SCFT	16'	1	2	59, 86	192"	4 1/8"	3 7/8"

# General Purpose Channel (SCF)

## Two-Lamp Photometric Data



### Coefficients of Utilization

Floor Cavity Reflectance 0.20

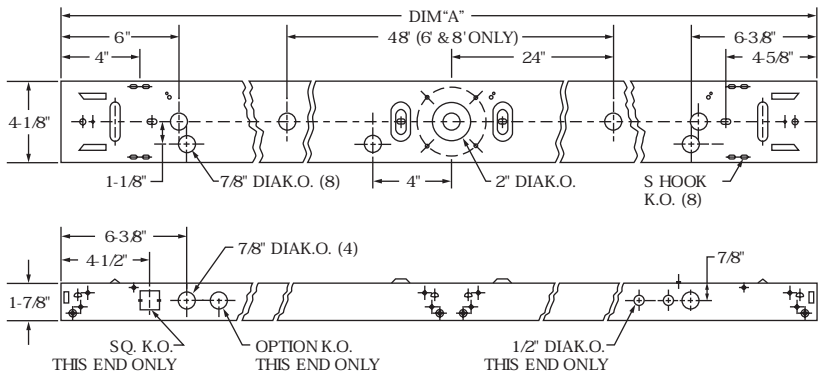
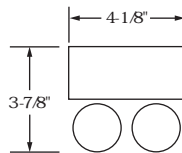
Room Cavity Ratio	RC RWV	80%			50%			10%		
		50	30	10	50	30	10	50	30	10
	1	87	84	80	78	75	72	65	63	62
2	76	69	63	67	62	58	57	54	51	
3	66	59	52	58	52	48	49	45	42	
4	58	50	44	52	46	40	44	39	35	
5	50	43	37	45	38	34	39	34	30	
6	45	37	31	40	33	29	35	30	26	
7	40	32	26	36	29	24	31	26	22	
8	36	28	22	33	26	22	27	22	19	
9	32	24	19	29	22	18	25	20	16	
10	29	22	17	26	20	15	22	18	14	

## SPECIFICATIONS

Housing is die-formed of cold-rolled steel for uniformity and stability. All metal components are phosphate coated and finished in baked white enamel providing a minimum reflectance factor of 85%. Quarter turn channel covers can be removed without the use of tools. All units include combination end plate/couplers. Rapid start and slimline fixtures are equipped with high power factor Class "P" ETL-CBM ballasts (120 volt 60 Hz is standard). Trigger start 20 watt units are UL-LPF. Fixtures are UL-listed and bear union and UL labels.

## DIMENSIONS

All KOs are 7/8" dia.  
unless otherwise specified.



	DIM" A"	
2' FIXTURE	(610mm)	24"
3' FIXTURE	(914mm)	36"
4' FIXTURE	(1219mm)	48"
6' FIXTURE	(1829mm)	72"
8' FIXTURE	(2438mm)	96"
16' FIXTURE	(4877mm)	192"

NOTE: Do not flush mount  
T8 HO units Suspend  
minimum 1-1/2" from surface

Dimensions and specifications subject to change without notice.