

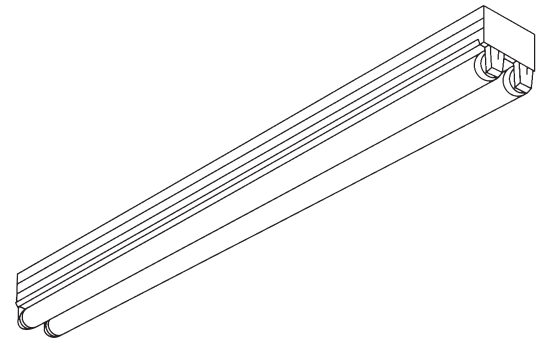
CATALOG NO. _____



TYPE NO. _____

JOB NAME _____

Premium Channel (SCN)



ORDERING INFORMATION

Catalog Number: Example: SCN286-B

SCN				
FAMILY		LAMP TYPE CODE	VOLTAGE	BALLAST
Note: Suffix Family name with "T" for tandem fixtures Ex. SCNT	NUMBER OF LAMPS (per cross section) 1 2	32- 32W T8 (48") 54- 54W T5HO (48") 59- 59W T8 (96") Slimline 44- 44W T8 (48") High Output 65- 65W T8 (72") High Output 86- 86W T8 (96") High Output	1- 120 7- 277 B- UNV 120-277	Ballast Matrix
				OPTIONS Options List Suffix catalog number with Option Code

PRODUCT FEATURES

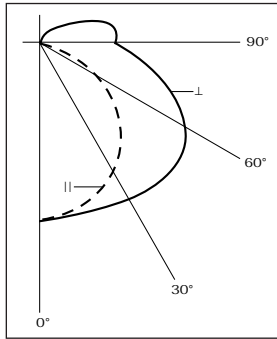
- Ends do not require tools for installation or maintenance.
- Combination end plate/coupler can be used for individual mounting or slides into position between two fixtures, assuring integrity of row alignment.
- Optional heavy-duty 10" sleeve couplers can provide additional bracing at fixture junctures.
- Symmetric and asymmetric reflectors are available for additional downlight and directional control.
- UL Damp Location labels are standard with this series.
- 1/4 turn fastener to lock ballast cover on housing.

PRODUCT AVAILABILITY

FAMILY	NOMINAL SIZE	NUMBER OF LAMPS (per cross section)	NUMBER OF LAMPS (per fixture)	LAMP TYPE CODE	LENGTH	WIDTH	HEIGHT
SCN	4'	2	2	28, 32, 54	48"	4 1/8"	4 3/4"
		1	1	28, 32			
		1	1	44, 54			
		2	2	44, 54			
SCN	6'	1	1	65	72"	4 1/8"	4 3/4"
		2	2	65			
SCN	8'	1	1	59	96"	4 1/8"	4 3/4"
		2	2	59			
		1	1	86			
		2	2	86			
SCNT	16'	1	2	59	192"	4 1/8"	4 3/4"
		1	2	86			

Premium Channel (SCN)

Two-Lamp Photometric Data



Coefficients of Utilization

Floor Cavity Reflectance 0.20

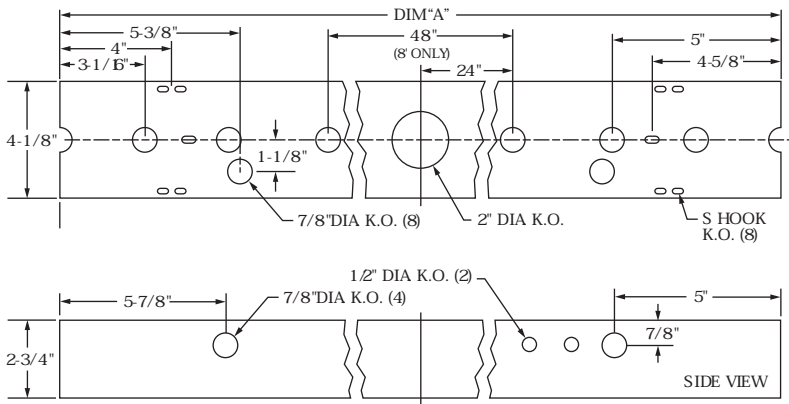
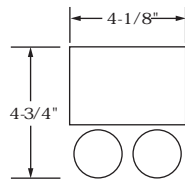
Room Cavity Ratio	RC	80%			50%			10%		
	RW	50	30	10	50	30	10	50	30	10
1	87	84	80	78	75	72	65	63	62	
2	76	69	63	67	62	58	57	54	51	
3	66	59	52	58	52	48	49	45	42	
4	58	50	44	52	46	40	44	39	35	
5	50	43	37	45	38	34	39	34	30	
6	45	37	31	40	33	29	35	30	26	
7	40	32	26	36	29	24	31	26	22	
8	36	28	22	33	26	22	27	22	19	
9	32	24	19	29	22	18	25	20	16	
10	29	22	17	26	20	15	22	18	14	

SPECIFICATIONS

Housing is die-formed of cold-rolled steel. All metal components are phosphate coated and finished in baked white enamel providing a minimum reflectance factor of 85%. Quarter turn type channel covers can be removed without the use of tools. All fixtures include combination end plate/coupler. Units are equipped with high power factor Class "P" ETL-CBM ballasts (120 volt 60 Hz is standard). Fixtures are UL-listed and bear union and UL labels.

DIMENSIONS

All KOs are 7/8" dia.
unless otherwise specified.



	DIM" A"
2' FIXTURE	(610mm) 24"
3' FIXTURE	(914mm) 36"
4' FIXTURE	(1219mm) 48"
6' FIXTURE	(1829mm) 72"
8' FIXTURE	(2438mm) 96"
16' FIXTURE	(4877mm) 192"

NOTE: Do not flush mount HO or PG (VHO) units. HO units should be suspended minimum 1-1/2" from surface. PG units should be suspended minimum 6" from surface.

Dimensions and specifications subject to change without notice.