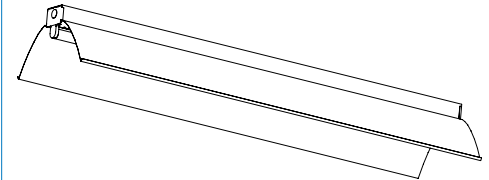


Industrial Fluorescent

T8 Narrow Distribution Strip
4' or 8' 1 Lamp T8**construction/finish**

- Photometric distribution is tightly controlled and focused with spacing/mounting height of 0.6 perpendicular to the lamp.
- Applications include task lighting and aisle lighting. Can be used in continuous rows as an alternative to individually mounted multi-lamp fluorescent high bays.
- Suitable for individual or row mounting in surface mount or suspended applications.
- Combination channel end plate/couplers included.
- Heavy-duty channel of code gauge die-formed steel.
- Channel is multi-stage phosphate treated for maximum corrosion resistance and finish coat is high reflectance baked white enamel
- Reflector is fabricated from 95% reflective specular aluminum to maximize luminaire efficiency and light control.
- Reflector is retained by quarter turn fasteners, providing easy ballast access without tools.

electrical

- Class P, HPF ballasts comply with ⓔ Federal Ballast Law (Public Law 100-357, 1988)
- Minimum starting temperature is 0°F for most models when used with non-energy saving lamps.
- Green grounding screw installed in channel.
- Lampholders may be individually replaced or rewired.
- Twist-lock locking lampholders provide secure lamp retention and positive electrical contact.
- UL listed for direct mounting on low density ceilings.
- UL listed for damp locations. Units incorporating emergency ballasts UL listed for dry locations.

Specifier's Reference

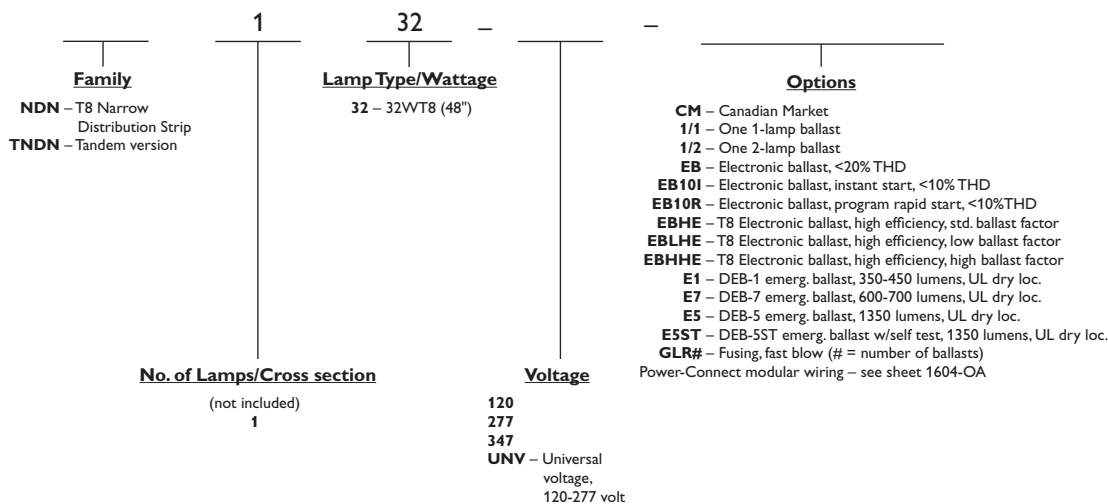
Project

Type

Model No.

Comments

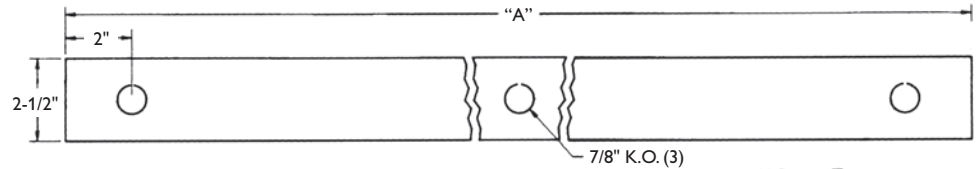
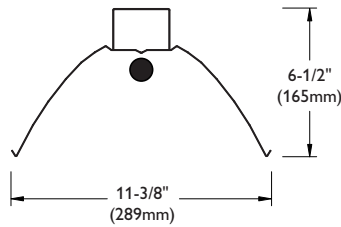
Green Choice: TNDN132-UNV-1/2-EBHHE



1408-IF

dimensions

T5 Narrow Distribution Strip



DIM "A"	Inches	(mm)
4' CHANNEL	48"	(1219 mm)
8' CHANNEL	96"	(2438 mm)

photometry

4' or 8' 1 Lamp T8

Efficiency – 95.4%

LER – 77

TER – 56

Catalog No.	NDN132	Candlepower				Light Distribution				Average Luminance			
Test No.	28998	Angle	End	45	Cross	Degrees	Lumens	% Lamp	% Luminaire	Angle	End	45°	Cross
S/MH	0.6	0	2001	2001	2001	0-30	1159	40.7	42.6	45	6272	2471	2040
Lamp Type	F32T8	5	1993	1964	1902	0-40	1672	58.7	61.5	55	5717	1845	275
Lumens/Lamp	2850	15	1906	1587	1282	0-60	2427	85.1	89.2	65	4737	187	76
Ballast Factor	0.88	25	1751	971	751	0-90	2660	93.3	97.8	75	2953	208	139
Input Watts	31	35	1523	580	550	90-120	30	1.0	1.1	85	906	453	371
		45	1236	487	402	90-130	37	1.3	1.4				
		55	914	295	44	90-150	50	1.8	1.8				
		65	558	22	9	90-180	59	2.1	2.2				
		75	213	15	10	0-180	2719	95.4	100.0				
		85	22	11	9								
		95	7	10	10								
		105	6	9	10								
		115	7	9	10								
		125	6	9	10								
		135	5	9	10								
		145	7	10	12								
		155	7	11	11								
		165	9	12	13								
		175	9	11	12								

Comparative yearly lighting energy cost per 1000 lumens – **\$3.12** based on 3000 hrs. and \$.08 pwr KWH.

The photometric results were obtained in the Philips Day-Brite laboratory which is NVLAP accredited by the National Institute of Standards and Technology.

Coefficients of Utilization												
EFFECTIVE FLOOR CAVITY REFLECTANCE 20 PER (pfc=0.20)												
pcc	80			70			50					
pw	70	50	30	70	50	30	50	30				
RCR												
0	112	112	112	110	110	110	105	105				
1	106	102	98	103	100	96	94	93				
2	97	92	86	95	90	84	85	81				
3	91	82	76	89	81	75	78	72				
4	84	75	68	81	73	67	70	66				
5	79	68	60	77	67	60	65	58				
6	73	63	55	71	61	55	59	54				
7	68	57	51	67	56	50	55	48				
8	65	54	46	63	53	46	51	45				
9	60	50	42	59	48	42	47	41				
10	57	46	40	56	46	39	45	39				

Comparative yearly lighting energy cost per 1000 lumens – \$3.12 based on 3000 hrs. and \$.08 pwr KWH.

The photometric results were obtained in the Philips Day-Brite laboratory which is NVLAP accredited by the National Institute of Standards and Technology.

Coefficients of Utilization

EFFECTIVE FLOOR CAVITY REFLECTANCE 20 PER (pfc=0.20)

PCC	80			70			50		
PW	70	50	30	70	50	30	50	30	
RCR									
0	112	112	112	110	110	110	105	105	
1	106	102	98	103	100	96	94	93	
2	97	92	86	95	90	84	85	81	
3	91	82	76	89	81	75	78	72	
4	84	75	68	81	73	67	70	66	
5	79	68	60	77	67	60	65	58	
6	73	63	55	71	61	55	59	54	
7	68	57	51	67	56	50	55	48	
8	65	54	46	63	53	46	51	45	
9	60	50	42	59	48	42	47	41	
10	57	46	40	56	46	39	45	39	



Some luminaires use fluorescent or high intensity discharge (HID) lamps that contain small amounts of mercury. Such lamps are labeled, "Contain Mercury" and/or the symbol "HG". Lamps that contain mercury must be disposed of in accordance with local requirements. Information regarding lamp recycling and disposal can be found at www.lamprecycle.org



© 2013 Koninklijke Philips Electronics N.V. All rights reserved.
Specifications are subject to change without notice.
www.philips.com/luminaires

1408-IF 04/13

Philips Lighting Company
200 Franklin Square Drive
Somerset, NJ 08873
Phone: 855-486-2216

Philips Lighting Company
281 Hillmount Road
Markham ON, Canada L6C 2S3
Phone: 800-668-9008