

# Day-Brite

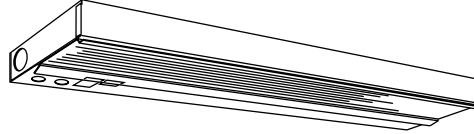
## CFI

by  Signify

### Linear

5UC specification  
undercabinet

Solid front T5



Project: \_\_\_\_\_

Location: \_\_\_\_\_

Cat.No: \_\_\_\_\_

Type: \_\_\_\_\_

Lamps: \_\_\_\_\_ Qty: \_\_\_\_\_

Notes: \_\_\_\_\_

The Day-Brite / CFI 5UC specification undercabinet is a very shallow specification grade undercabinet T5 luminaire with electronic ballast.

#### Ordering guide

Example: 5UC128S-UNV

Lamp Type	Family	No. of Lamps	Lamp Watts/ Luminaire Length	Lens	Voltage	Options
<input type="text" value="5"/>	<input type="text" value="UC"/>	<input type="text" value="1"/>		<input type="text" value="S"/> —	—	
5 T5	UC Undercabinet	1	<b>14</b> 14WT5 (22-3/4") <b>21</b> 21WT5 (34-1/2") <b>28</b> 28WT5 (46-1/4")	<b>S</b> Solid Front	<b>UNV</b> Universal voltage 120/277V <b>120</b> 120V <b>277</b> 277V <b>347</b> 347V	<b>CO</b> Ground convenience outlet (120V only) <b>GLR</b> Fusing, fast blow <b>RS</b> Rocker switch (120V only) <b>LPT830</b> 80+ CRI, 3000K lamp (in place of standard 3500K lamp) <b>LPT841</b> 80+ CRI, 4100K lamp (in place of standard 3500K lamp)

# 5UC Specification undercabinet

## Solid front, T5

### Construction/Finish

- Specification grade undercabinet light fixture.
- All metal parts painted after fabrication with white polyester paint finish.
- Lens removable without tools for easy maintenance and cleaning.
- All electrical components mounted on an easily removable service tray.
- Low profile (only 1-1/8" deep) provides neat, trim appearance.

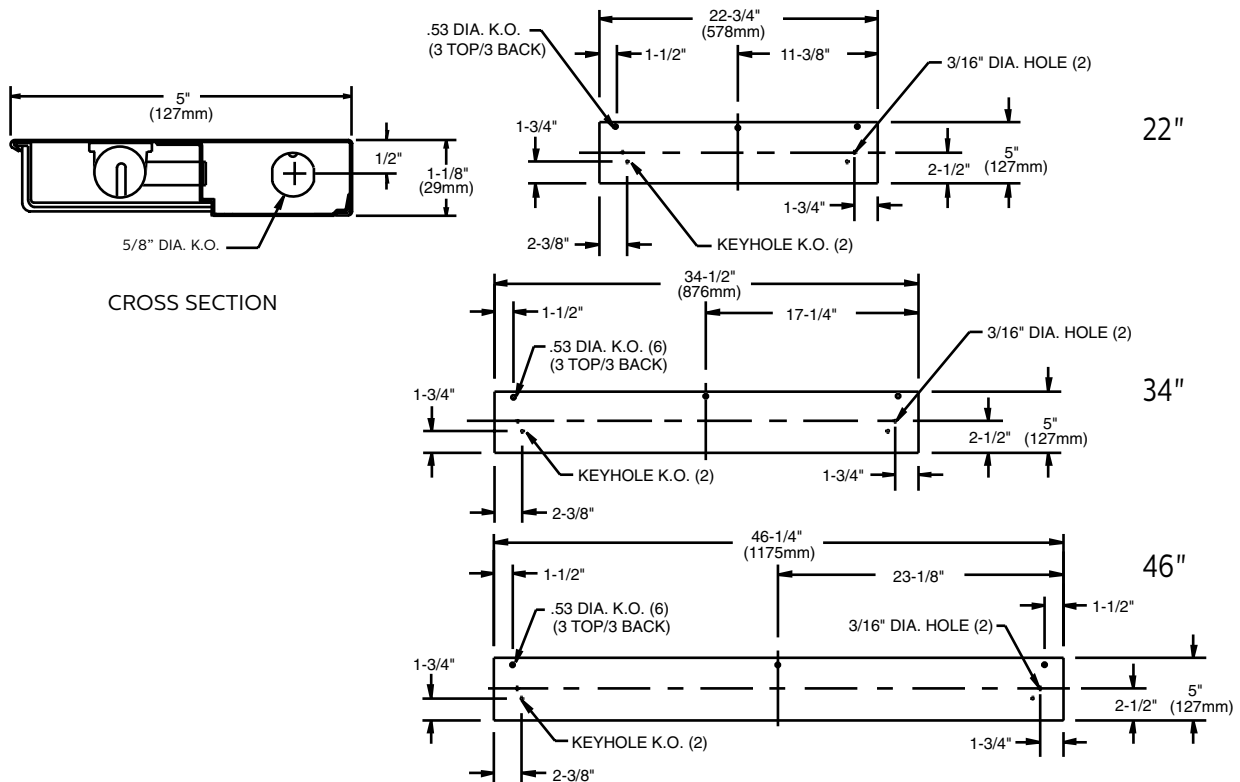
### Electrical

- cULus listed.
- Electronic ballast is standard.
- T5 triphosphor (835) lamp is supplied as standard. Other color temperatures are optional.
- Optional switch or grounded convenience outlet available on 120v models only.

### Enclosure

- 100% acrylic lens.
- Lens easily removable without tools.
- Linear prisms hide the lamp image and uniformly distribute the light output.

### Dimensions



# 5UC Specification undercabinet

Solid front, T5

## Photometry

5UC specification undercabinet T5, solid front Efficiency – 79.6%

Catalog No.	5UC128S
Test No.	17847
S/MH	1.3
Lamp Type	F28T5
Ballast Factor	88
Input Watts	29



## Lumen Summary

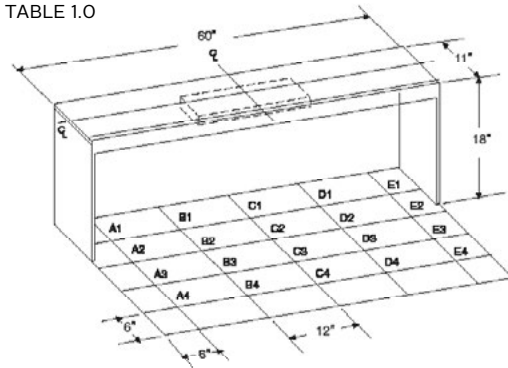
Angle	Lumens	%Lamp	% Fixture
(0-30)	234	8.1	216
(0-40)	394	13.6	351
(0-60)	742	25.6	614
(0-90)	1082	37.3	767
(90-180)	199	6.9	4
(0-180)	1281	44.2	771

INITIAL FOOTCANDLES CORRESPOND TO TABLE 1.0

4FT-T5 W/SOLID FRONT

	A	B	C	D	E
1	120	242	281	240	124
2	96	184	214	186	96
3	51	97	113	97	53
4	24	37	45	40	23

TABLE 1.0



Some luminaires use fluorescent or high intensity discharge (HID) lamps that contain small amounts of mercury. Such lamps are labeled, "Contain Mercury" and/or the symbol "HG". Lamps that contain mercury must be disposed of in accordance with local requirements. Information regarding lamp recycling and disposal can be found at [www.lamprecycle.org](http://www.lamprecycle.org)

