

PHILIPS

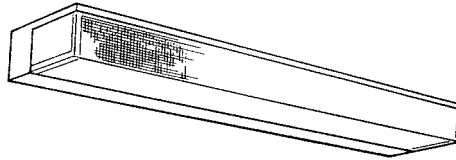
Day-Brite

CFI

Linear

Aztec wall mount

T8



Project: _____
 Location: _____
 Cat.No: _____
 Type: _____
 Lamps: _____ Qty: _____
 Notes: _____

The Philips Day-Brite / Philips CFI Aztec wall mount is a decorative and functional wall mounted luminaire.

Ordering guide

Example: CD232W-UNV-1/2-EB

Family	No. of Lamps (not included)	Lamp Watts/ Luminaire Length	Body Finish	Voltage	Options
<input type="text"/>	<input type="text"/>	<input type="text"/>	<input type="text"/> – <input type="text"/>	<input type="text"/> – <input type="text"/>	<input type="text"/>
CD Aztec (downlight)	1	17 17WT8 (24")	W White	UNV Universal voltage	CO Ground convenience outlet (120V only)
CB Aztec (up/ downlight)	2	25 25WT8 (36") 32 32WT8 (48")	B Black	120 120V 277 277V 347 347V	S1 Pull chain switch (on/off)(120V only) S4 Pull chain switch (4 position)(Requires 2/1 ballast config) (120V only) NLI Night Light (incandescent)(120V only) 1/1 One 1-lamp ballast 1/2 One 2-lamp ballast 2/1 Two 1-lamp ballasts EB Electronic ballast, <10% THD, std. ballast factor EB10R T8 electronic ballast, program rapid start, <10% THD EBHE T8 electronic ballast, high efficiency, std. ballast factor EBLHE T8 electronic ballast, high efficiency, low ballast factor EBHHE T8 electronic ballast, high efficiency, high ballast factor EBD7 Advance Mark 7 dimming ballast, 0-10V (low voltage) control EBDX Advance Mark 10 dimming ballast, phase control EBD Electronic dimming ballast, customer specified E1 B100 emerg. ballast, 350-450 lumens, 120/277V E1CAN B100-CAN emerg. ballast, Canada market, 350-450 lumens, 120/347V E7 B60 emerg. ballast, 600-700 lumens, 120/277V E5 B50 emerg. ballast, U.S. or Canada market, 1100-1400 lumens, UNV (3' or 4' models only) E5CAN B50-CAN emerg. ballast, Canada market, 1100-1400 lumens, 120/347V (3' or 4' models only) E5ST B50ST emerg. ballast w/self test, U.S. or Canada market, 1100-1400 lumens, UNV (3' or 4' models only) GLR Fusing, fast blow

CD & CB Aztec wall mount

T8

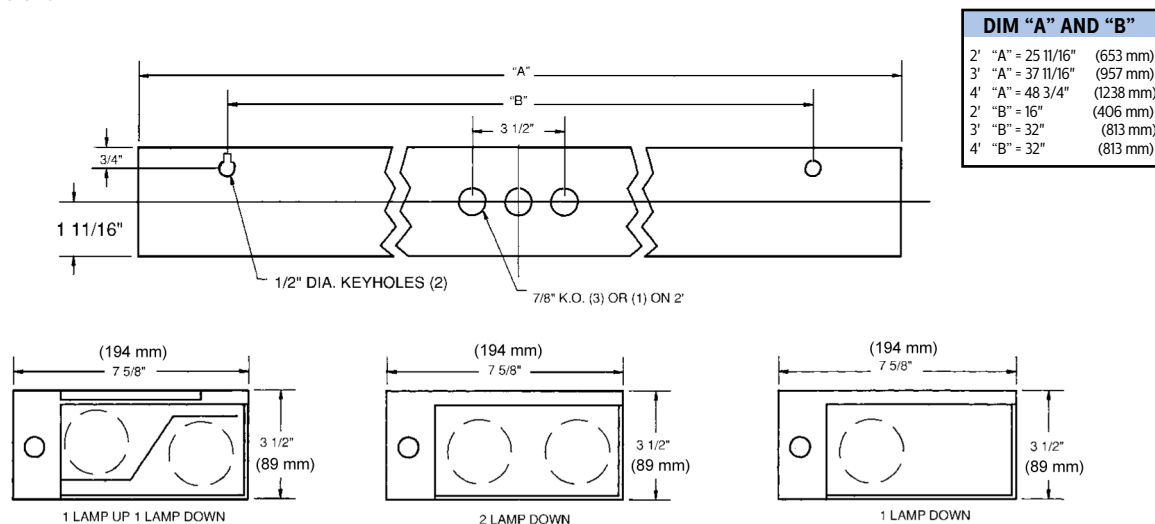
Construction/Finish

- Injection molded clear polycarbonate lens.
- Baked white enamel inside finish. Exterior finished in black semi-gloss acrylic enamel. Also available in white exterior.
- Choice of 100% downlight or 50% down/50% uplight.
- Knockouts and keyholes provide various mounting options.
- Heavy duty channel of code gauge die formed steel.
- Various options such as color, convenience outlet, on/off pull chain switch, 4 position pull switch, night light.
- Solid top model may be ceiling mounted.

Electrical

- cULus listed for damp locations.
- Lampholders snap into socket plates and may be individually replaced or rewired.

Dimensions



Some luminaires use fluorescent or high intensity discharge (HID) lamps that contain small amounts of mercury. Such lamps are labeled, "Contain Mercury" and/or the symbol "HG". Lamps that contain mercury must be disposed of in accordance with local requirements. Information regarding lamp recycling and disposal can be found at www.lamprecycle.org

