

PHILIPS

Day-Brite

CFI

Special Application

SDPH2020 series surface mount

Maximum security
T5, T5HO, or T8



Project: _____
Location: _____
Cat.No: _____
Type: _____
Lamps: _____ Qty: _____
Notes: _____

The Philips Day-Brite / Philips CFI SDPH2020 series surface mount utilizes a drop hinge door and 3 apertures. It is designed for high efficiency and wide light distribution in the cell environment.

Ordering guide

Example: MAXSDPH2020-332-UNV-4A-F1-1/3-EB

Family		No. of Lamps	Lamp Type ¹	Voltage	Lens Type	Fasteners	No. of Ballasts	Ballast Type	Options						
<div></div>	—	<div>3</div>	<div></div> —	<div></div> —	<div></div> —	<div></div> —	<div></div> —	<div></div> —	<div></div>						
MEDSDPH2020	16 gauge Med. Security	3 Three lamps	14 14WT5 (24")	UNV Universal voltage, 120-277V	1 .125 Clear polycarbonate	F1 Allen Head Center Pin Reject	1/3 3-Lamp Ballast	EB Electronic ballast, <10% THD, T8 instant start, T5 rapid start	E7 B60 emerg. ballast, T8, 600-700 lumens, 120/277V ²						
MAXSDPH2020	17 17WT8 (24")		277 277V							2 .187 Clear Polycarbonate (MED Standard)	F2 TORX Head Center Pin Reject	1/21 2-Lamp and 1-Lamp Ballast	EB10R Electronic ballast, T8 rapid start, <10% THD	E5 B50 emerg. ballast, U.S. or Canada market, T8, 1100-1400 lumens, UNV ³	
SMAXSDPH2020	24HO 24WT5HO (24")														347 347V
	28 28WT5 (48")	4 .375 Clear Polycarbonate (MAX Standard)		5 .500 Clear Polycarbonate (SMAX Standard)	6 .187 Clear Tempered Glass	7 .250 Clear Tempered Glass	8 .375 Clear Tempered Glass	9 .500 Clear Tempered Glass							
	32 32WT8 (48")		A .125 Prismatic Acrylic						B .125 DR Prismatic Acrylic	C .140 DR Prismatic Acrylic	D .187 DR Prismatic Acrylic	E .125 Prismatic Polycarbonate	F .187 Prismatic Polycarbonate	G .156 Prismatic Tempered Glass	
	54HO 54WT5HO (48")														SS Stainless steel backplate, brushed stainless steel housing

Footnotes

- ¹ Lamps supplied by others.
- ² Specify Voltage.
- ³ Limited availability in 2ft. length luminaires. Consult factory.

General Notes

- Consult factory for additional configurations.
- Many luminaire components, such as reflectors, refractors, lenses, sockets, lampholders, and LEDs are made from various types of plastics which can be adversely affected by airborne contaminants. If sulfur based chemicals, petroleum based products, cleaning solutions, or other contaminants are expected in the intended area of use, consult factory for compatibility.

MED/MAX/SMAXSDPH2020 Surface mount

Maximum security, T5, T5HO, or T8

Standards

- ETL (US/Canada) listing.
- Optional Damp location listing.

Construction/Finish

- One piece die-formed cold rolled steel clamshell housing. All exposed seams continuous welded. Optional stainless steel housing available.
- One-piece, die-formed, cold rolled steel backplate formed to provide an irretrievable contraband trap. Also available in stainless steel.
- Completely concealed, 1/4" diameter knuckle continuous piano hinge with staked pins. Hinge welded to one-piece housing and bolted to back plate.
- Fully recessed, captive center-pin reject Allen head fasteners are standard. Other fasteners are available.

- Standard baked white polyester powder coat paint finish. Multi-stage pretreatment process. Salt spray 1,000 hours.

Lens

- Standard .125" clear prismatic acrylic inner lens with clear polycarbonate outer lens or as specified. See ordering information below.
- Lens retention is accomplished by vertically adjustable "Z" shaped retaining angles secured with through studs and locknuts.

Electrical

- Standard Class P, sound rated A electronic ballast. Other ballast options available.
- Removable ballast tray is standard with quick disconnects to reduce installation and maintenance time. This feature is not available with some options. Consult factory for more information.

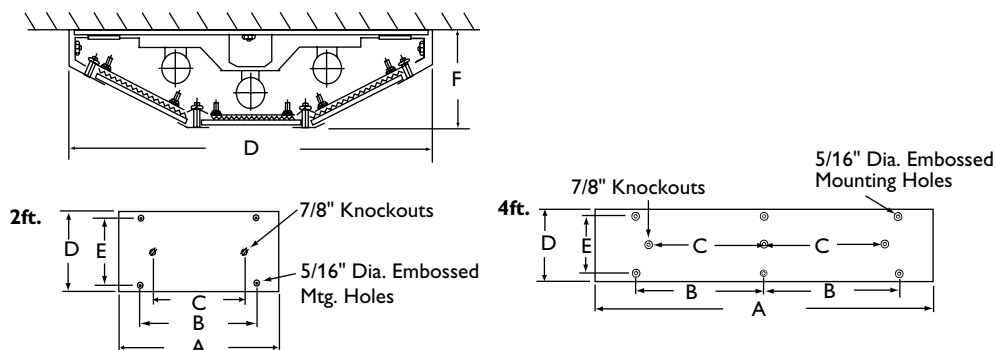
Installation

- Embossed mounting holes in backplate to provide direct contact with mounting surface.

Option

- Agion™ Antimicrobial protection using silver technology inhibits bacterial colonization on metal interior and exterior surfaces. Agion™ antimicrobial FDA recognized and EPA registered, meeting all applicable EPA standards. Only available with standard white finish.

Dimensions



Size	A	B	C	D	E	F
2ft.	26"	18"	16"	20"	16"	5"
4ft.	50"	19"	16"	20"	16"	5"



Some luminaires use fluorescent or high intensity discharge (HID) lamps that contain small amounts of mercury. Such lamps are labeled, "Contain Mercury" and/or the symbol "HG". Lamps that contain mercury must be disposed of in accordance with local requirements. Information regarding lamp recycling and disposal can be found at www.lamprecycle.org

