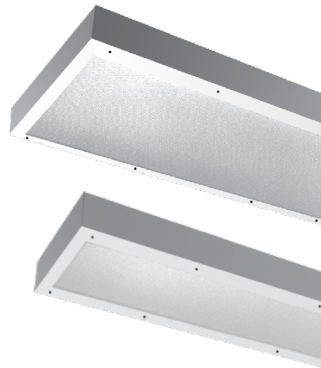


PHILIPS Day-Brite CFI

Special Application

SDPH series surface mount

Maximum security
T5, T5HO, or T8



Project: _____
Location: _____
Cat.No: _____
Type: _____
Lamps: _____ Qty: _____
Notes: _____

The Philips Day-Brite / Philips CFI SDPH series surface mount utilizes a drop hinge door and is designed for security applications including cells, dayrooms, dormitory, and holding areas..

Ordering guide

Example: **MAXSDPH24-432-UNV-4A-F1-2/2-EB**

Family	Size	No. of Lamps	Lamp Type ¹	Voltage	Lens Type	Fasteners	No. of Ballasts	Ballast Type	Options
<input type="text"/>	<input type="text"/> - <input type="text"/>	<input type="text"/>	<input type="text"/> - <input type="text"/>	<input type="text"/> - <input type="text"/>	<input type="text"/> - <input type="text"/>	<input type="text"/> - <input type="text"/>	<input type="text"/> - <input type="text"/>	<input type="text"/> - <input type="text"/>	<input type="text"/>
MEDSDPH 16 gauge Med. Security	14 1x4 15 15" Wide	2 Two lamps	14 14WT5 (24") 17 17WT8 (24") 24HO 24WT5HO (24")	UNV Universal voltage, 120-277V	1 .125 Clear polycarbonate 2 .187 Clear Polycarbonate 3 .250 Clear Polycarbonate (MED Standard) 4 .375 Clear Polycarbonate (MAX Standard) 5 .500 Clear Polycarbonate (SMAX Standard) 6 .187 Clear Tempered Glass 7 .250 Clear Tempered Glass 8 .375 Clear Tempered Glass 9 .500 Clear Tempered Glass Lamp Side A .125 Prismatic Acrylic B .125 DR Prismatic Acrylic C .140 DR Prismatic Acrylic D .187 DR Prismatic Acrylic E .125 Prismatic Polycarbonate F .187 Prismatic Polycarbonate G .156 Prismatic Tempered Glass H .156 Prismatic Polycarbonate UV .007 UV Absorbing Overlay	F1 Allen Head Center Pin F2 TORX Head Center Pin SF Specified Fastener	1/2 One 2-lamp ballast 1/3 One 3-lamp ballast 1/4 One 4-lamp ballast 2/1 Two 1-lamp ballasts 2/2 Two 2-lamp ballasts 1/21 One 2 lamp & One 1 lamp ballasts	EB Electronic ballast, <10% THD, T8 instant start, T5 rapid start EB10R Electronic ballast, T8 rapid start, <10% THD SB Specified ballast	E7 B60 emerg. ballast, T8,600-700 lumens, 120/277V ² E5 B50 emerg. ballast, U.S. or Canada market, T8, 1100-1400 lumens, UNV ³ E5CAN B50-CAN emerg. ballast, Canada market, T8, 1100-1400 lumens, 120/347V ^{2,3} E7LP LP550 emerg. ballast T5/T5HO, 430-700 lumens, 120/277V ^{2,3} E6LP LP600 emerg. ballast U.S. or Canada market, T5/T5HO, 750-1325 lumens, 120/277V ^{2,3} SS Stainless steel housing, brushed stainless steel door SSP CRS housing, painted stainless steel door SSD CRS housing, brushed stainless steel door GLR Fusing, fast blow Agion™ antimicrobial protection in powder coat paint (white finish only) NLF7 7W PL Night Light ^{2,3} NLED5 LED nightlight ³ (120V only) WL Wet location

Footnotes

- ¹ Lamps supplied by others.
² Specify Voltage.
³ Limited availability in 2ft. length luminaires. Consult factory.

General Notes

• Many luminaire components, such as reflectors, refractors, lenses, sockets, lampholders, and LEDs are made from various types of plastics which can be adversely affected by airborne contaminants. If sulfur based chemicals, petroleum based products, cleaning solutions, or other contaminants are expected in the intended area of use, consult factory for compatibility.

MED/MAX/SMAXSDPH Surface mount

Maximum security, T5, T5HO, or T8

Standards

- ETL (US/Canada) listing.
- Optional Wet location listing available.

Construction/Finish

- One piece die-formed cold rolled steel clamshell housing. All exposed seams continuous welded. Optional stainless steel housing available.
- One piece die-formed cold rolled steel drop hinged door with welded corners in gauge to match housing. Also available in stainless steel with brushed or painted finish.
- Completely concealed 1/4" diameter knuckle continuous piano hinge with staked pins. Hinge welded to one-piece door and bolted to housing.
- Fully recessed, captive center-pin reject Allen head fasteners are standard. Other fasteners are available.

- Standard baked white polyester powder coat paint finish. Multi-stage pretreatment process. Salt spray 1,000 hours.

Lens

- Standard .125" thick clear prismatic acrylic inner lens with clear polycarbonate outer lens or as specified. See ordering information below.
- Lens retention is accomplished by vertically adjustable "Z" shaped retaining angles secured with through studs and locknuts.

Electrical

- Standard Class P, sound rated A electronic ballast. Other ballast options available.
- Removable ballast tray is standard with quick disconnects to reduce installation and maintenance time. This feature is not available with some options. Consult factory for more information.

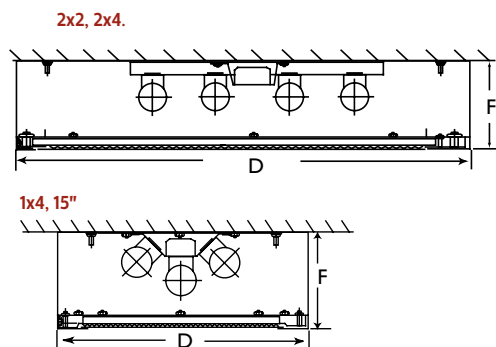
Installation

- Embossed 5/16" diameter mounting holes in backplate to provide direct contact with mounting surface.

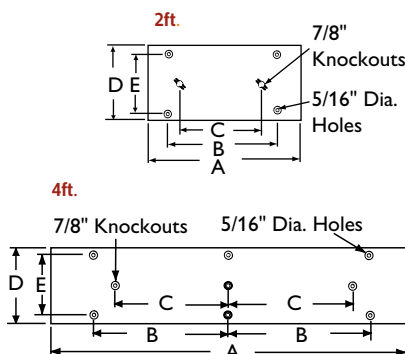
Option

- Agion™ Antimicrobial protection using silver technology inhibits bacterial colonization on metal interior and exterior surfaces. Agion™ antimicrobial FDA recognized and EPA registered, meeting all applicable EPA standards. Only available with standard white finish.

Dimensions



Size	A	B	C	D	E	F
14	50"	19"	16"	12"	9"	4.5"
15.2ft.	26"	18"	16"	15"	11"	4.5"
15.4ft.	50"	19"	16"	15"	11"	4.5"
22	25"	21"	16"	24"	18"	4.5"
24	50"	19"	16"	24"	21"	4.5"



Some luminaires use fluorescent or high intensity discharge (HID) lamps that contain small amounts of mercury. Such lamps are labeled, "Contain Mercury" and/or the symbol "HG". Lamps that contain mercury must be disposed of in accordance with local requirements. Information regarding lamp recycling and disposal can be found at www.lamprecycle.org

