

# PHILIPS

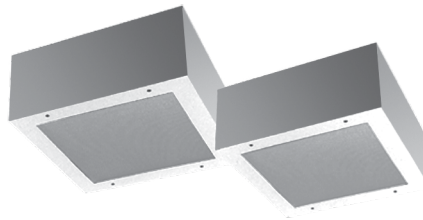
## Day-Brite

### CFI

### Special Application

### SDPH square series surface mount

Quad, triple tube, MH, HPS, or PSMH



Project: \_\_\_\_\_

Location: \_\_\_\_\_

Cat.No: \_\_\_\_\_

Type: \_\_\_\_\_

Lamps: \_\_\_\_\_ Qty: \_\_\_\_\_

Notes: \_\_\_\_\_

The Philips Day-Brite / Philips CFI SDPH square series surface mount with drop hinge door is designed for security applications including bath/shower areas, corridors, doorways, and entrances.

#### Ordering guide

Example: MAXSDPH125-213Q-UNV-4A-F1

Family	Size	No. of Lamps/ Lamp Type <sup>1</sup>	Voltage	Lens Type	Fasteners	Options
<input type="text"/>	<input type="text"/> - <input type="text"/>	<input type="text"/> - <input type="text"/>	<input type="text"/> - <input type="text"/>	<input type="text"/> - <input type="text"/>	<input type="text"/> - <input type="text"/>	<input type="text"/>
<b>MEDSDPH</b> 16ga. Med. Security	<b>125</b> 1'x1' Square Unit	<b>SDPH125</b> 213Q 2-13W Quad 226Q 2-26W Quad	<b>UNV</b> Universal voltage, 120-277V	<b>Environment Side</b> 1 .125 Clear polycarbonate 2 .187 Clear Polycarbonate 3 .250 Clear Polycarbonate (MED Standard)	<b>F1</b> Allen Head Center Pin	<b>B94GU/E</b> Emergency ballast (SDPH145 26/32/42W, CFL only, SDPH125 – consult factory)
<b>MAXSDPH</b> 14ga. Max. Security	<b>145</b> 14" Square Unit	132TRT 1-32W TRT 142TRT 1-42W TRT	<b>347</b> 347V	<b>HID</b> 4 .375 Clear Polycarbonate (MAX Standard)	<b>Reject</b>	<b>SS</b> Stainless steel housing, brushed stainless steel door
<b>SMAXSDPH</b> 12ga. Super Max. Security	<b>188</b> 20" Square Unit	<b>SDPH145</b> 232TRT 2-32W TRT 242TRT 2-42W TRT 342TRT 3-42W TRT 50MH 1-50W MH <sup>2</sup> 70MH 1-70W MH <sup>2</sup> 50HPS 1-50W HPS <sup>2</sup> 70HPS 1-70W HPS <sup>2</sup>	<b>DT</b> 120/277V <b>MT</b> 120/208/240/277V <b>TT</b> 120/277/347V	5 .500 Clear Polycarbonate (SMAX Standard) 6 .187 Clear Tempered Glass 7 .250 Clear Tempered Glass 8 .375 Clear Tempered Glass 9 .500 Clear Tempered Glass <b>DP</b> Drop Polycarbonate (SDPH145 only. No lamp side lens required)	<b>F2</b> TORX Head Center Pin <b>Reject</b> <b>SF</b> Specified Fastener	<b>SSD</b> CRS housing, brushed stainless steel door <b>SSP</b> CRS housing, painted stainless steel door <b>GLR</b> Fusing, fast blow <b>AG</b> Agion™ antimicrobial protection in powder coat paint (white finish only) <b>Q</b> Quartz restrike (SDPH145 & SDPH188, HID only) <b>WL</b> Wet location listing
		<b>SDPH188</b> 70MH 1-70W MH <sup>2</sup> 100MH 1-100W MH <sup>2</sup> 150MH 1-150W MH <sup>2</sup> 175MH 1-175W MH <sup>2</sup> 200PMH 1-200W PSMH <sup>2</sup> 250PMH 1-250W PSMH <sup>2</sup> 70HPS 1-70W HPS <sup>2</sup> 100HPS 1-100W HPS <sup>2</sup> 150HPS 1-150W HPS <sup>2</sup> 200HPS 1-200W HPS <sup>2</sup> 250HPS 1-250W HPS <sup>2</sup>		<b>Lamp Side</b> <b>A</b> .125 Prismatic Acrylic <b>B</b> .125 DR Prismatic Acrylic <b>C</b> .140 DR Prismatic Acrylic <b>D</b> .187 DR Prismatic Acrylic <b>E</b> .125 Prismatic Polycarbonate <b>F</b> .187 Prismatic Polycarbonate <b>G</b> .156 Prismatic Tempered Glass <b>H</b> .156 Prismatic Polycarbonate <b>UV</b> .007 UV Absorbing Overlay		

#### Footnotes

- <sup>1</sup> Lamps supplied by others.  
<sup>2</sup> Requires "G" lamp side glass lens.

#### General Notes

- Many luminaire components, such as reflectors, refractors, lenses, sockets, lampholders, and LEDs are made from various types of plastics which can be adversely affected by airborne contaminants. If sulfur based chemicals, petroleum based products, cleaning solutions, or other contaminants are expected in the intended area of use, consult factory for compatibility.



Standard Metal Halide  
Between 175W and 250W  
Not available in USA



# MED/MAX/SMAXSDPH Square surface mount

Maximum security, quad, triple tube, MH, HPS, or PSMH

## Standards

- ETL (US/Canada)
- Optional Wet Location listing available.

## Construction/Finish

- One piece die-formed cold rolled steel clamshell housing. All exposed seams continuous welded. Optional stainless steel housing available.
- One piece die-formed cold rolled steel drop hinged door with welded corners in gauge to match housing. Also available in stainless steel with brushed or painted finish.
- Completely concealed 1/4" diameter knuckle continuous piano hinge with staked pins. Hinge welded to one-piece door and bolted to housing.
- Fully recessed, captive center-pin reject Allen head fasteners are standard. Other fasteners are available.
- Standard baked white polyester powder coat paint finish. Multi-stage pretreatment process. Salt spray 1,000 hours.

## Lens

- Standard .125" thick clear prismatic acrylic inner lens with clear polycarbonate outer lens or as specified. Optional Drop Polycarbonate lens available on SDPH145 Series only. See ordering information below.
- Lens Retention is accomplished by vertically adjustable "Z" shaped retaining angles secured with through studs and locknuts.

## Electrical

- Standard Class P, sound rated A electronic CFL ballast.
- Removable ballast tray is standard with quick disconnects to reduce installation and maintenance time. This feature is not available with some options. Consult factory for more information.
- HID ballast is high reactance, high power factor or CWA (Constant Wattage Auto Transformer) with a minimum starting temperature of -20°F (-30°C) for standard Metal Halide and -40°F (-40°C) for Pulse Start Metal Halide or High Pressure Sodium.

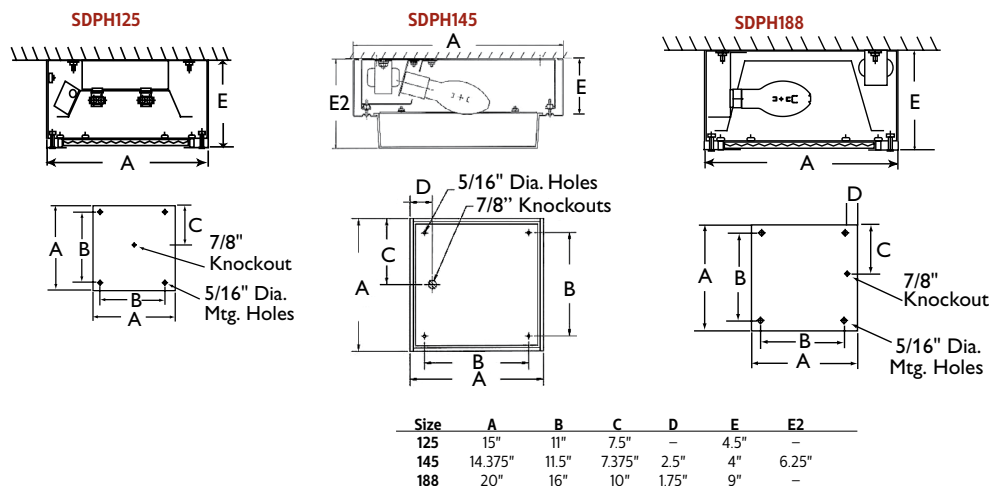
## Installation

- Embossed 5/16" diameter mounting holes in backplate to provide direct contact with mounting surface.

## Option

- Agion™ Antimicrobial protection using silver technology inhibits bacterial colonization on metal interior and exterior surfaces. Agion™ antimicrobial FDA recognized and EPA registered, meeting all applicable EPA standards. Only available with standard white finish.

## Dimensions



Some luminaires use fluorescent or high intensity discharge (HID) lamps that contain small amounts of mercury. Such lamps are labeled, "Contain Mercury" and/or the symbol "HG". Lamps that contain mercury must be disposed of in accordance with local requirements. Information regarding lamp recycling and disposal can be found at [www.lamprecycle.org](http://www.lamprecycle.org)

