

PHILIPS

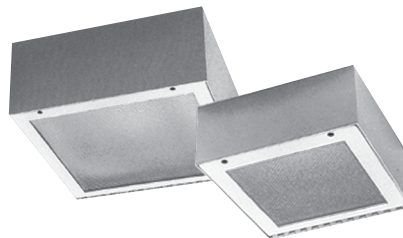
Day-Brite

CFI

Special Application

SH square series surface mount

Quad, triple tube, MH,
HPS, or PSMH



Project: _____
Location: _____
Cat.No: _____
Type: _____
Lamps: _____ Qty: _____
Notes: _____

The Philips Day-Brite / Philips CFI SDPH square series surface mount with hinged door is designed for security applications including bath/shower areas, corridors, doorways, and entrances.

Ordering guide

Example: MAXSH125-132TRT-UNV-4A-F1

Family	Size	No. of Lamps/ Lamp Type ¹	Voltage	Lens Type ³	Fasteners	Options
<input type="text"/>	<input type="text"/> - <input type="text"/>	<input type="text"/> - <input type="text"/>	<input type="text"/> - <input type="text"/>	<input type="text"/> - <input type="text"/>	<input type="text"/> - <input type="text"/>	<input type="text"/>
MINSH 18ga. Min. Security	125 1'x1' Square Unit	213Q 226Q 132TRT 142TRT	SH125 2-13W Quad 2-26W Quad 1-32W TRT 1-42W TRT	UNV Universal voltage, 120-277V 347V	CFL	Environment Side 1 .125 Clear polycarbonate 2 .187 Clear Polycarbonate 3 .250 Clear Polycarbonate (MED Standard) 4 .375 Clear Polycarbonate (MAX Standard) 5 .500 Clear Polycarbonate (SMAX Standard) 6 .187 Clear Tempered Glass 7 .250 Clear Tempered Glass 8 .375 Clear Tempered Glass 9 .500 Clear Tempered Glass Lamp Side A .125 Prismatic Acrylic B .125 DR Prismatic Acrylic C .140 DR Prismatic Acrylic D .187 DR Prismatic Acrylic E .125 Prismatic Polycarbonate F .187 Prismatic Polycarbonate G .156 Prismatic Tempered Glass H .156 Prismatic Polycarbonate UV .007 UV Absorbing Overlay
MEDSH 16ga. Med. Security	188 20" Square Unit	70MH 100MH 150MH 175MH 200PMH 250PMH 70HPS 100HPS 150HPS 200HPS 250HPS	SH188 1-70W MH ² 1-100W MH ² 1-150W MH ² 1-175W MH ² 1-200W PSMH ² 1-250W PSMH ² 1-70W HPS ² 1-100W HPS ² 1-150W HPS ² 1-200W HPS ² 1-250W HPS ²	DT 120/277V MT 120/208/240/277V TT 120/277/347V	HID	F1 Allen Head Center Pin Reject F2 TORX Head Center Pin Reject SF Specified Fastener
MAXSH 14ga. Max. Security						B94GU/E Emergency ballast (SH125, 26/32/42W CFL only) SS Stainless steel housing, brushed stainless steel door ALUM .050" aluminum housing and door (MINSH only) GLR Fusing, fast blow AG Agion™ antimicrobial protection in powder coat paint (white finish only) Q Quartz restrrike (SH188 only) WL Wet location listing
SMAXSH 12ga. Super Max. Security						

Footnotes

- ¹ Lamps supplied by others.
² Requires "G" lamp side glass lens.
³ Must use DP lens type for SDPH145.

General Notes

- Many luminaire components, such as reflectors, refractors, lenses, sockets, lampholders, and LEDs are made from various types of plastics which can be adversely affected by airborne contaminants. If sulfur based chemicals, petroleum based products, cleaning solutions, or other contaminants are expected in the intended area of use, consult factory for compatibility.



Standard Metal Halide
Between 175W and 250W
Not available in USA



MIN/MED/MAX/SMAXSH Square surface mount

Maximum security, quad, triple tube, MH, HPS, or PSMH

Standards

- ETL (US/Canada)
- Optional Wet Location listing available.

Construction/Finish

- One piece die-formed cold rolled steel housing. All exposed seams continuous welded. Optional stainless steel or aluminum housing available.
- One piece die-formed cold rolled steel door with welded corners in gauge to match housing. Also available in stainless steel with brushed finish or aluminum.
- 1/4" diameter knuckle continuous piano hinge with staked pins. Hinge welded to housing and door.
- Fully recessed, captive center-pin reject Allen head fasteners are standard. Other fasteners are available.
- Standard baked white polyester powder coat paint finish. Multi-stage pretreatment process. Salt spray 1,000 hours.

Lens

- Standard .125" clear prismatic acrylic inner lens with clear polycarbonate outer lens or as specified. See ordering information below.
- Lens retention is accomplished by vertically adjustable "Z" shaped retaining angles secured with through studs and locknuts.

Electrical

- Standard Class P, sound rated A electronic CFL ballast.
- Removable ballast tray is standard with quick disconnects to reduce installation and maintenance time. This feature is not available with some options. Consult factory for more information. HID units are not equipped with this feature.
- HID ballast is high reactance, high power factor or CWA (Constant Wattage Auto Transformer) with a minimum starting temperature of -20°F (-30°C) for standard Metal Halide and -40°F (-40°C) for Pulse Start Metal Halide or High Pressure Sodium.

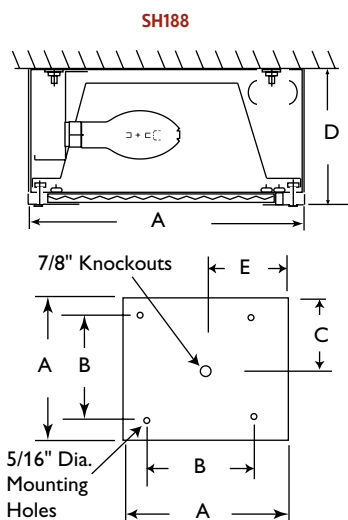
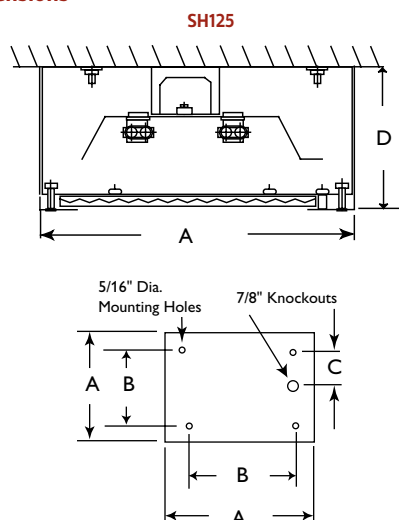
Installation

- Standard 5/16" diameter mounting holes (4) for surface mounting.

Option

- Agion™ Antimicrobial protection using silver technology inhibits bacterial colonization on metal interior and exterior surfaces. Agion™ antimicrobial FDA recognized and EPA registered, meeting all applicable EPA standards. Only available with standard white finish.

Dimensions



Size	A	B	C	D
125	12"	9"	6"	5"
188	18"	15"	9"	8"



Some luminaires use fluorescent or high intensity discharge (HID) lamps that contain small amounts of mercury. Such lamps are labeled, "Contain Mercury" and/or the symbol "HG". Lamps that contain mercury must be disposed of in accordance with local requirements. Information regarding lamp recycling and disposal can be found at www.lamprecycle.org

