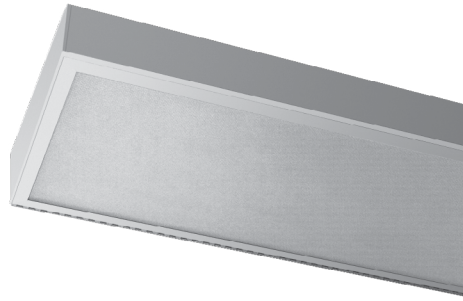


# PHILIPS Day-Brite CFI

## Special Application

### TG series troffer

Maximum security  
T5, T5HO, or T8



Project: \_\_\_\_\_  
Location: \_\_\_\_\_  
Cat.No: \_\_\_\_\_  
Type: \_\_\_\_\_  
Lamps: \_\_\_\_\_ Qty: \_\_\_\_\_  
Notes: \_\_\_\_\_

The Philips Day-Brite / Philips CFI TG series maximum security troffer is designed for grid ceilings in public waiting areas, locker rooms, and hallways.

### Ordering guide

Example: MAXTG24-432-UNV-4A-F1-2/2-EB

Family	Size	No. of Lamps	Lamp Type <sup>1</sup>	Voltage	Lens Type	Fasteners	No. of Ballasts	Ballast Type	Options
<input type="text"/>	<input type="text"/> - <input type="text"/>	<input type="text"/>	<input type="text"/> - <input type="text"/>	<input type="text"/> - <input type="text"/>	<input type="text"/> - <input type="text"/>	<input type="text"/> - <input type="text"/>	<input type="text"/> - <input type="text"/>	<input type="text"/> - <input type="text"/>	<input type="text"/>
<b>MINTG</b> 18ga. Min. Security	<b>14</b> 1x4	<b>2</b> Two lamps	<b>14</b> 14WT5 (24")	<b>UNV</b> Universal voltage, 120-277V	<b>Environment Side</b> <b>1</b> .125 Clear polycarbonate	<b>F1</b> Allen Head Center Pin	<b>1/2</b> One 2-lamp ballast	<b>EB</b> Electronic ballast, <10% THD, T8 instant start, T5 rapid start	<b>E7</b> B60 emerg. ballast, T8, 600-700 lumens, 120/277V <sup>2</sup>
<b>MEDTG</b> 16ga. Med. Security	<b>22</b> 2x2	<b>3</b> Three lamps	<b>17</b> 17WT8 (24")	<b>120</b> 120V	<b>2</b> .187 Clear Polycarbonate (MED Standard)	<b>Pin Reject</b>	<b>1/3</b> One 3-lamp ballast		<b>E5</b> B50 emerg. ballast, U.S. or Canada market, T8, 1100-1400 lumens, UNV <sup>3</sup>
<b>MAXTG</b> 14ga. Max. Security	<b>24</b> 2x4	<b>4</b> Four lamps (not available in 1x4)	<b>24HO</b> 24WT5HO (24")	<b>277</b> 277V	<b>3</b> .250 Clear Polycarbonate (MAX Standard)	<b>F2</b> TORX Head Center Pin	<b>1/4</b> One 4-lamp ballast	<b>EB10R</b> Electronic ballast, T8 rapid start, <10% THD	<b>E5CAN</b> B50-CAN emerg. ballast, Canada market, T8, 1100-1400 lumens, 120/347V <sup>2,3</sup>
<b>SMAXTG</b> 12ga. Super Max. Security		<b>6</b> Six lamps (2x4 only)	<b>28</b> 28WT5 (48")	<b>347</b> 347V	<b>4</b> .375 Clear Polycarbonate (MAX Standard)	<b>Center Pin Reject</b>	<b>2/1</b> Two 1-lamp ballasts	<b>SB</b> Specified ballast	<b>E7LP</b> LP550 emerg. ballast T5/T5HO, 430-700 lumens, 120/277V <sup>2,3</sup>
			<b>32</b> 32WT8 (48")		<b>5</b> .500 Clear Polycarbonate (SMAX Standard)	<b>SF</b> Specified Fastener	<b>2/2</b> Two 2-lamp ballasts		<b>E6LP</b> LP600 emerg. ballast U.S. or Canada market, T5/T5HO, 750-1325 lumens, 120/277V <sup>2,3</sup>
			<b>54HO</b> 54WT5HO (48")		<b>6</b> .187 Clear Tempered Glass		<b>1/21</b> One 2 lamp & one 1 lamp ballast		<b>SS</b> Stainless steel housing, brushed stainless steel door
					<b>7</b> .250 Clear Tempered Glass		<b>1/42</b> One 4-lamp & one 2-lamp ballast		<b>SSD</b> CRS housing, brushed stainless steel door
					<b>8</b> .375 Clear Tempered Glass		<b>2/3</b> Two 3-lamp ballasts		<b>ALUM</b> .050" aluminum housing door (MINTG only)
					<b>9</b> .500 Clear Tempered Glass				<b>GLR</b> Fusing, fast blow
					<b>Lamp Side</b> <b>A</b> .125 Prismatic Acrylic				<b>AG</b> Agion™ antimicrobial protection in powder coat paint (white finish only)
					<b>B</b> .125 DR Prismatic Acrylic				<b>NLF7</b> 7W PL Night Light <sup>2,3</sup>
					<b>C</b> .140 DR Prismatic Acrylic				<b>NLEDS</b> LED nightlight <sup>3</sup> (120V only)
					<b>D</b> .187 DR Prismatic Acrylic				<b>WL</b> Wet location listing
					<b>E</b> .125 Prismatic Polycarbonate				
					<b>F</b> .187 Prismatic Polycarbonate				
					<b>G</b> .156 Prismatic Tempered Glass				
					<b>H</b> .156 Prismatic Polycarbonate				
					<b>UV</b> .007 UV Absorbing Overlay				

### Footnotes

- Lamps supplied by others.
- Specify voltage.
- Limited availability in 2ft. length luminaires. Consult factory.

### General Notes

- Many luminaire components, such as reflectors, refractors, lenses, sockets, lampholders, and LEDs are made from various types of plastics which can be adversely affected by airborne contaminants. If sulfur based chemicals, petroleum based products, cleaning solutions, or other contaminants are expected in the intended area of use, consult factory for compatibility.



# MIN/MED/MAX/SMAXTG Troffer

Maximum security, T5, T5HO, or T8

## Standards

- ETL (US/Canada) listing.
- Optional Wet location listing available.

## Construction/Finish

- One piece die-formed cold rolled steel housing with welded seams. Optional stainless steel or aluminum housing available.
- One piece die-formed cold rolled steel door in gauge to match housing. Also available in stainless steel with brushed finish or aluminum.
- 1/4" diameter knuckle continuous piano hinge with staked pins. Hinge welded to housing and door.
- Fully recessed, captive center-pin reject Allen head fasteners are standard. Other fasteners are available.

- Standard baked white polyester powder coat paint finish. Multi-stage pretreatment process. Salt spray 1,000 hours.

## Lens

- Standard .125" thick clear prismatic acrylic inner lens with clear polycarbonate outer lens or as specified. See ordering information below.
- Lens Retention is accomplished by vertically adjustable "Z" shaped retaining angles secured with through studs and locknuts.

## Electrical

- Standard Class P, sound rated A electronic ballast. Other ballast options available.

- Removable ballast tray is standard with quick disconnects to reduce installation and maintenance time. This feature is not available with some options. Consult factory for more information.

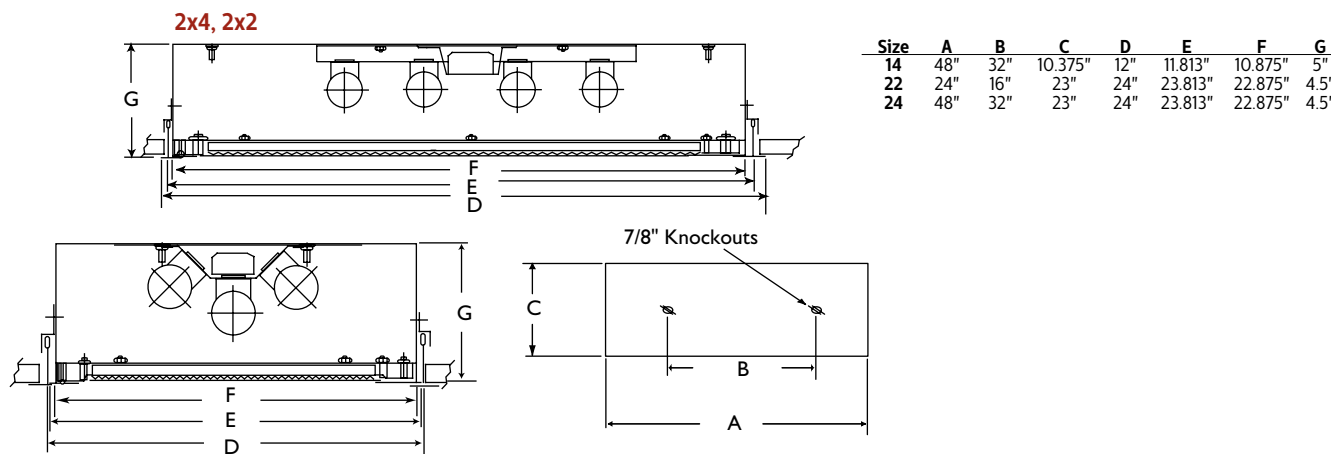
## Installation

- Housing fits standard 1" grid ceiling. Support above plenum by others.
- Not suitable for flange-type ceilings.

## Option

- Agion™ Antimicrobial protection using silver technology inhibits bacterial colonization on metal interior and exterior surfaces. Agion™ antimicrobial FDA recognized and EPA registered, meeting all applicable EPA standards. Only available with standard white finish.

## Dimensions



Some luminaires use fluorescent or high intensity discharge (HID) lamps that contain small amounts of mercury. Such lamps are labeled, "Contain Mercury" and/or the symbol "HG". Lamps that contain mercury must be disposed of in accordance with local requirements. Information regarding lamp recycling and disposal can be found at [www.lamprecycle.org](http://www.lamprecycle.org)

