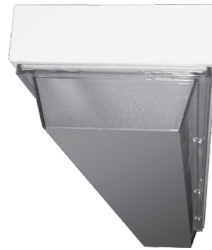


PHILIPS Day-Brite CFI

Special Application

VSM series
surface mount

Vandal resistant
T8



Project:

Location:

Cat.No:

Type:

Lamps:

Qty:

Notes:

The Philips Day-Brite / Philips CFI VSM series surface mount is a heavy-duty vandal resistant luminaire perfect for use in corridors, washrooms, exterior walkways, or anywhere a damp or wet location rating is desirable.

Ordering guide

Example: VSM232-UNV-F1-1/2-EB

Family	No. of Lamps	Lamp Type ¹	Voltage	Fasteners	No. of Ballasts	Ballast Type	Options
VSM		32 –	–	–	–	–	
VSM Vandal surface mount	1 One lamp 2 Two lamps	32 32WT8 (48")	UNV Universal voltage, 120-277V 120 120V 277 277V 347 347V	F1 Allen Head Center Pin Reject F2 TORX Head Center Pin Reject SF Specified Fastener	1/1 One 1 lamp ballast 1/2 One 2 lamp ballast	EB Electronic ballast, <10% THD, instant start EB1OR Electronic ballast, <10% THD, rapid start SB Specified ballast	E7 B60 emerg. ballast, T8, 600-700 lumens, 120/277V ^{1,2} E5 B50 emerg. ballast, U.S. or Canada market, T8, 1100-1400 lumens, UNV ^{1,2} SS Brushed stainless steel housing SSP Stainless steel housing, painted ALUM Aluminum housing GLR Fusing, fast blow AG Agion™ antimicrobial protection in powder coat paint (white finish only)

Footnotes

- ¹ Lamps supplied by others.
² Specify voltage.

General Notes

- Many luminaire components, such as reflectors, refractors, lenses, sockets, lampholders, and LEDs are made from various types of plastics which can be adversely affected by airborne contaminants. If sulfur based chemicals, petroleum based products, cleaning solutions, or other contaminants are expected in the intended area of use, consult factory for compatibility.

VSM Surface mount

Vandal resistant, T8

Standards

- ETL (US/Canada) Wet location listing.

Construction/Finish

- 16-gauge cold rolled steel housing with continuous welded seams.
- Reflector is white powder coated prime cold rolled steel with 93% reflectance.
- Stainless Steel Allen head center pin reject fasteners are standard. Other fasteners are available.
- Standard baked white polyester powder coat paint finish. Multi stage pretreatment process. Salt spray 1,000 hours.

Lens

- Standard .125" thick injection molded polycarbonate lens with frost finish.
- Closed cell neoprene gasketing seals lens to housing.

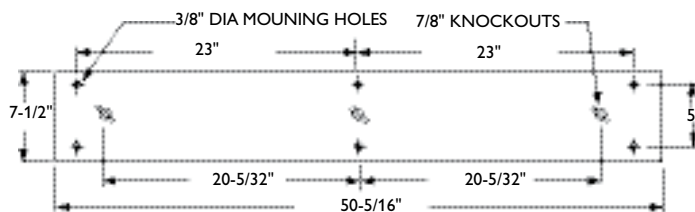
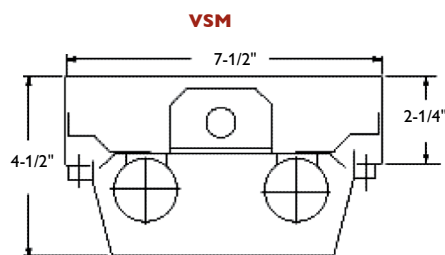
Electrical

- Standard Class P, sound rated A electronic ballast. Other ballast options available.

Option

- Agion™ Antimicrobial protection using silver technology inhibits bacterial colonization on metal interior and exterior surfaces. Agion™ antimicrobial FDA recognized and EPA registered, meeting all applicable EPA standards. Only available with standard white finish.

Dimensions



Some luminaires use fluorescent or high intensity discharge (HID) lamps that contain small amounts of mercury. Such lamps are labeled, "Contain Mercury" and/or the symbol "HG". Lamps that contain mercury must be disposed of in accordance with local requirements. Information regarding lamp recycling and disposal can be found at www.lamprecycle.org

