

## Features

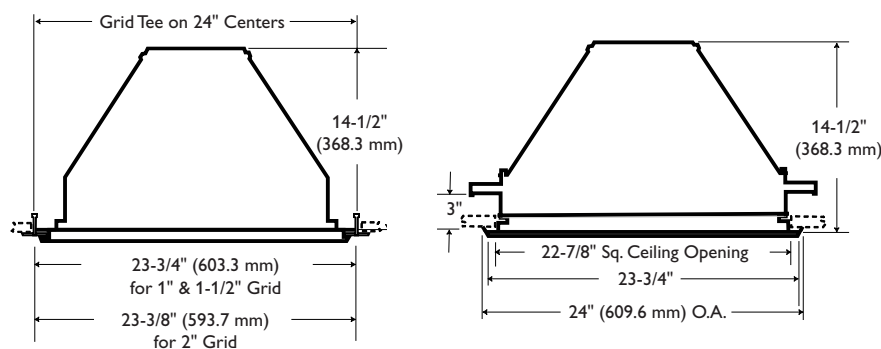
- 2' x 2' sealed recessed HID unit up to 400V.
- Standard flange unit fits ceilings up to 3" thick.
- Designed for flange, 1", 1-1/2", or 2" grid mounting.
- 2" grid unit will fit most gasketed or gel systems.
- Housing constructed of .04" aluminum with seismic support mounting feature standard.
- Door is standard double thick 20ga overlap painted steel.
- Lens is silicone sealed into door frame.
- Door frame is secured to housing when opened for safety and ease during re-lamping.
- Door frame is secured to housing by captive stainless steel screws. Tamper resistant is optional.
- Door frame is sealed to housing with closed cell polyethylene gasket. Silicone gasket is optional.
- Standard lens is .200" thick high temperature acrylic.
- Top or bottom access.
- 200 PSI hosedown.
- Certified to meet US 1598 standards for wet location.

## Kleenseal KHR 200

Sealed Recessed HID



## Dimensions



Kleenseal KHR 200 is a recessed HID cleanroom luminaire with overlap door well suited for food processing facilities, chemical plants or anywhere top-access is a requirement.

**Note:** For technical information or codes and classifications, see PDFs Tech1-Tech5 online.



**Standard Metal Halide**  
Between 175W and 400W  
Not available in USA

## Green Product Choice: KH2G210E3C731

KH2							
Mounting		Door Frame		Voltage		Options	
G – Grid (1" or 1/2")		3 – CRS 1 piece overlap white		1 – 120V		FF – Fixture Fuse	
F – Flange		5 – 304 1 piece overlap stainless		2 – 277V		TP – Tamper Resistant Screws	
2G – 2" Gasketed Grid		6 – Extruded aluminum 4 piece flush white		3 – 347V		SC – Silicone Gasketing	
2J – 2" Gel Grid (3/4" knife edge)		9 – Extruded aluminum 4 piece flush anodized				IE – Emergency Circuit (250W max.)	
Family		Lamp Wattage/Type		Lens (prisms up standard)		ISL – Instant Stand-By Quartz (250W max.)	
KH2 – KHR-200 Series		175P – 175W Pulse Start MH		HTA – High temperature acrylic		DN – Lens Furnished with Prisms Down	
		210E – 210W Electronic MH		C73 – Prismatic tempered glass		CT – Custom Swing Arm Hanger; Specify Ceiling Thickness	
		250P – 250W Pulse Start MH		DRA – Drop acrylic - not available on #6 and #9 door frames		EB – Electronic Ballasts - (208, 240, 277V)	
		315E – 315W Electronic MH		UND – Polycarbonate underlay (with C73 prisms down)		DIM – Hi-Lo and Dimming - consult factory)	
		320P – 320W Pulse Start MH					
		350P – 350W Pulse Start MH					
		400P – 400W Pulse Start MH					

Philips Lighting Company  
200 Franklin Square Drive  
Somerset, NJ 08873  
Phone: 855-486-2216  
www.philips.com/luminaires

Philips Lighting Company  
281 Hillmount Road  
Markham ON, Canada L6C 2S3  
Phone: 800-668-9008

Kleenseal\_KHR200 04/13

**PHILIPS**  
**Day-Brite**

**PHILIPS**  
**CFI**