

Plascolume

Wet Location



Features

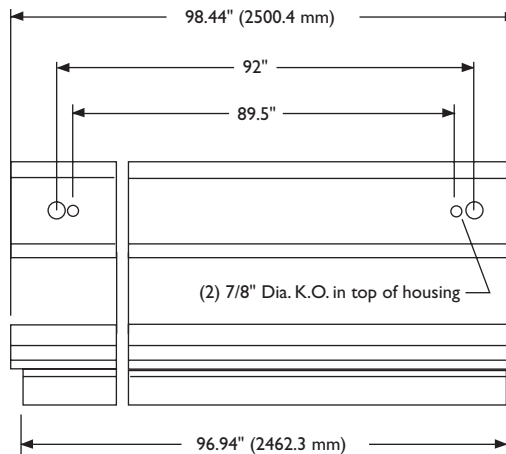
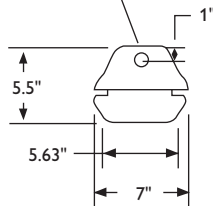
- Housing is formed of 22ga 304 stainless steel with 2B finish for corrosion resistance.
- End caps are attached to channel with silicone sealed rivets to prevent leaking.
- Ballasts are mounted to housing with welded studs to eliminate unnecessary penetration.
- Lens is made from 100% DR Acrylic with embossed prisms for brightness control.
- Lens is sealed to housing with extruded PVC gasket to prevent leaks.
- Stainless steel cam latches hold the lens frame to the body resulting in tool free entry.
- 1/2" cast aluminum hubs are standard with 3/4" aluminum and 3/4" stainless steel hubs optional.
- Class I, Division 2, Groups A, B, C, D; Class II Division 2 Group G; and Class III Temperature code T3C (40°C Ambient) "Hazardous Location" version only.
- Certified to meet UL 1598 standards for wet location.

Dimensions

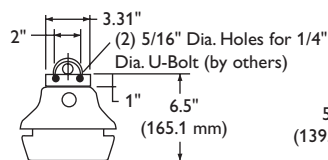
Plascolume is a corrosion resistant stainless steel luminaire with excellent brightness control suited for wet location applications.

Note: For technical information or codes and classifications, see PDFs Tech1-Tech5 online.

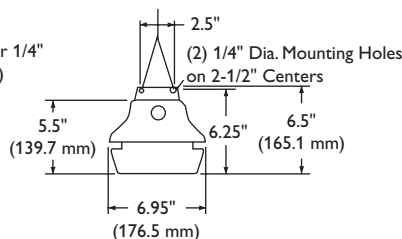
7/8" Dia. K.O. (1) in each end
(2) in top of housing



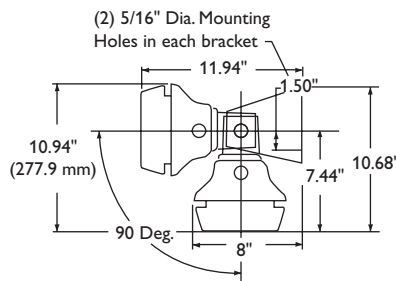
Pipe Mounting /PI



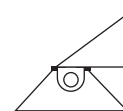
Chain Mounting Brackets /CH



Adjustable Mounting Brackets /AMB



Wall Mount /MB90



Green Product Choice: ACS67821

Lamps/Size		Options	
4 foot	8 foot	FF – Fast Acting Fixture Fuse, Buss GLR	
80 – 1-F32 T8	83 – 4-F32 T8	SFF – Slow Blow (Fusetron) Fuse, Buss GMF	
82 – 2-F32 T8	86 – 1-F96 T8/HO	0° – 0° operation	
95 – 2-T5HO	87 – 2-F96 T8/HO	EB – For Electronic Ballast	
	88 – 1-F96 T8	CH – Stainless Steel Chain Mounting Brackets (one pair)	
	89 – 2-F96 T8	AMB – Stainless Steel Adjustable Mounting Brackets (one pair)*	
	96 – 4-T5HO	PI – Pipe Mounting (PIPE NOT SUPPLIED)	
		SH – 3/4" Stainless Steel Hub	
		MB90 – Wall Mount	
		AH – 3/4" Cast Aluminum Hub	
Family	Voltage	Note: Hazardous location n/a with T5 lamps and approved for conduit, chain bracket, pipe, and wall mounting only.	
ACS77 – Hazardous Location	1 – 120V		
ACS67 – Wet Location	2 – 277V		
	3 – 347V		