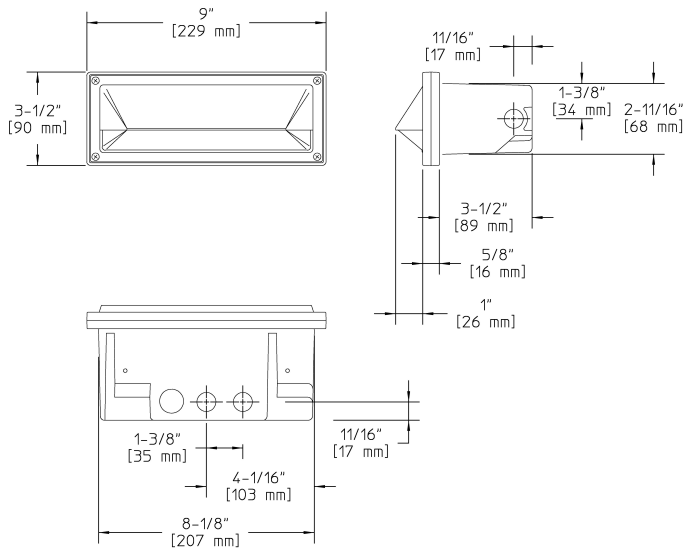


RSBL2_T5412 Specification Sheet

Project Name:	Location:	MFG: Philips Hadco
Fixture Type:	Catalog No.:	Qty:



Ordering Guide

Example: RSBL2_T5412 A P

Product Code	RSBL2_T5412		
Finish	A	Black	
	H	Bronze	
Thermal Protection	P	Thermal Protection Device	*1

*1 Thermal protection device is required for installations in drywall, plaster, "P" to the catalog number to order.

Specifications

- HOUSING:**
Aluminum parts have zinc-rich primer and thermoset powdercoat for durability. Faceplates are color-impregnated. Die-cast aluminum back box contains less than 0.3% copper to prevent corrosion in concrete or masonry applications. Thermal Protection device is required for installations in drywall, plaster, wood or other non-masonry materials. Die-cast aluminum trim contains less than 0.3% copper to resist corrosion. (Note: Flange not included with CB100 fixture.).
- FINISH:**
Thermoset polyester powdercoat is electrostatically applied after a five-stage conversion cleaning process and bonded by heat fusion thermosetting. Composite is textured, pressure formed, molded-in-color.
- OPTICAL ASSEMBLY:**
UV stabilized, injection molded polycarbonate bubble faceplate, reinforced with frosted tempered glass, with stainless steel screws.
- LAMPING:**
20W maximum T3 bi-pin lamp.
- ELECTRICAL ASSEMBLY:**
Bi-pin socket type (G4) with 250° C high temperature teflon coated wire leads. 12 volt fixture is pre-wired with 6-ft. pigtail of 18-2 AWG, 105° C, SPT-1W wire. Low voltage quick connector, catalog #LVC3 included for easy hook-up to the low voltage supply cable, not included. 12 Volt system requires remote transformer, not included.
- WARRANTY:**
Three-year limited warranty.
- CERTIFICATIONS:**
ETL listed to U.S. safety standards for wet locations. cETL listed to Canadian safety standards for wet locations. Manufactured to ISO 9001:2008 Standards. ADA Compliant when used in indoor and outdoor wall applications.
- Height :**
3 1/2" (89mm)
- Width:**
9" (229mm)
- Depth:**
4 1/2"
- Housing Height:**
2 11/16" (68mm)
- Housing Width:**
8 1/8" (207mm)

RSBL2_T5412 Specification Sheet

Project Name:	Location:	MFG: Philips Hadco
Fixture Type:	Catalog No.:	Qty:

Max. Weight:
1.45 lb