

# Large Utility Techtra (CF71) Specification Sheet

Project Name:

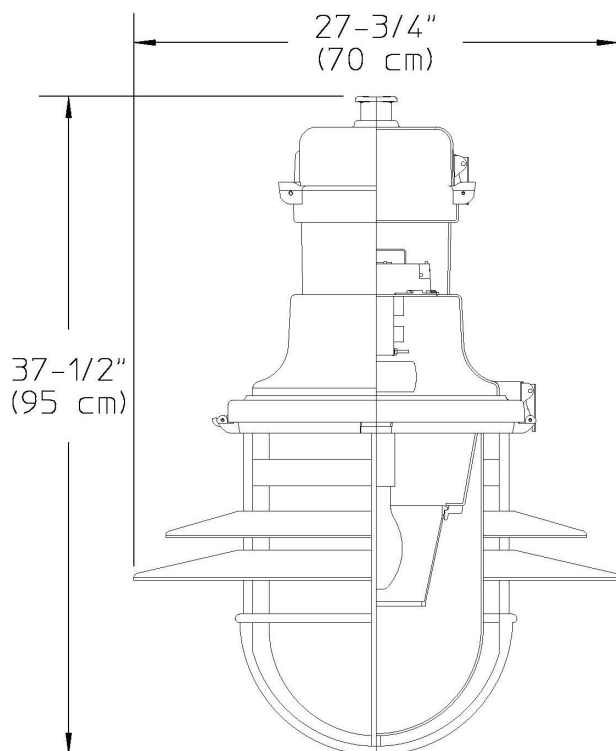
Location:

MFG: Philips Hadco

Fixture Type:

Catalog No.:

Qty:



## Ordering Guide

Example: CF71 A T R3 B D 100S E

Product Code	CF71	Large Utility Techtra
Finish	A	Black
	B	White
	H	Bronze
	I	Gray
	J	Green
Lens	T	Textured Polycarbonate
Optics	R3	Type III Refractor Bowl
	R5	Type V Refractor Bowl
	T3	Type III Cutoff
Photo Control	B	Button Eye Photo Control
	N	None
Socket	D	Medium
	G	Mogul
Wattage	100S	100W HPS
	150S	150W HPS
	250S	250W HPS
	100H	100W MH
	150H	150W PMH
	250H	250W PMH
Voltage	E	120V
	F	208V
	G	240V
	H	277V
	K	347V

\*1 Not available in 347V (K).

\*2 Available with Mogul base (G) socket only.

\*3 Available with Medium base (D) socket only.

## Specifications

### HOUSING:

356 HM high-strength, low-copper, proprietary cast aluminum alloy . 0.090" thick spun aluminum . Tool-less lamp access. Tool-less ballast access. Stainless steel latches and hinges provide tool-less access to ballast and lamping compartments. A weatherproof ballast assembly isolates the ballast from water and heat for longer life. All non-ferrous fasteners prevent corrosion and ensure longer life.

### FINISH:

Thermoset polyester powdercoat is electrostatically applied after a five-stage conversion cleaning process and bonded by heat fusion thermosetting. Laboratory tested for superior weatherability and fade resistance in accordance with ASTM B117 specifications. For larger projects where a custom color is required, contact the factory for more information.

### OPTICAL ASSEMBLY:

Type III Refractor Bowl. Type V Refractor Bowl. Heat-resistant, low expansion borosilicate glass refractor bowl. Type III Cutoff. Adjustable precision formed specular hydro-formed aluminum asymmetrical reflector assembly (adjustable 0° to 15°. Allows IES Type II at 0° and Type III at 15°). U.V. stabilized, clear, textured polycarbonate globe.

### LAMPING:

MH and HPS Medium base: E17. MH and 250W HPS Mogul base: ED28. HPS Mogul base: E23.5.

### ELECTRICAL ASSEMBLY:

Twistlock Ballast Assembly with Quick Disconnects for easy maintenance. Ballasts are HPF core and coil. 4kv rated porcelain mini-can base. Nickel-plated screw shell with center contact. 4kv rated mogul base porcelain socket. Nickel-plated screw shell with center contact.

### BALLAST:

All HID ballasts are core and coil and regulated with power factors better than 90% (HPF). Ballast provides +/- 5% lamp power regulation with +/- 10% input voltage regulation. Ballasts are factory pre-wired and tested. Metal halide ballasts are capable of starting at -20° F or -30° C and HPS at -40°F or -40°C. NOTE: All ballasts are EISA / Title 20 / Title 24 compliant where applicable.

### MOUNTING:

Top Arm Mount (T). Arm sold separately. Mounting adapter welded to fixture housing.

# Large Utility Techtra (CF71) Specification Sheet

Project Name:	Location:	MFG: Philips Hadco
Fixture Type:	Catalog No.:	Qty:

**CERTIFICATIONS:**

ETL Listed to U.S. safety standards for wet locations. cETL listed to Canadian safety standards for wet locations. Manufactured to ISO 9001:2008 Standards.

**WARRANTY:**

Three-year limited warranty.

**Height :**

37 1/2" (95cm)

**Width:**

27 3/4" (70cm)

**Max. EPA:**

2.25 sq. ft.

**Max. Weight:**

55 lbs

**IESNA Classifications:**

Semi Cutoff: Refractor Bowl

**IESNA Classifications:**

Cutoff: Cutoff Optics