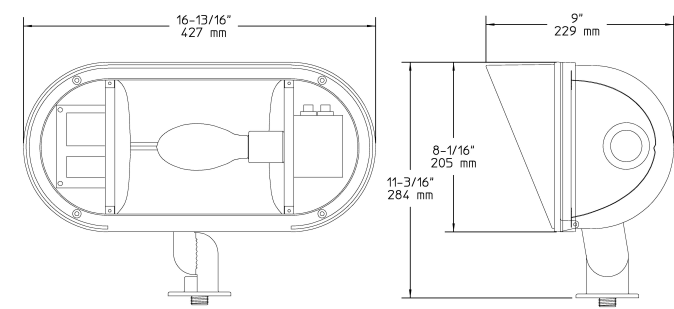


Aluminum Floodlyte (WA3) Specification Sheet

Project Name:	Location:	MFG: Philips Hadco
Fixture Type:	Catalog No.:	Qty:



Ordering Guide

Example: WA3 A HS N 70S E

Product Code	WA3	Aluminum Floodlyte
Finish	A B H G	Black White Bronze Verde
Optics	HS VF HF	Horizontal Spot Vertical Flood Horizontal Flood
Photo Control	N Y	None Yes
Wattage	70S 100S 150S 250S 70H 100H 150H 250H 300Q	70W HPS 100W HPS 150W HPS 250W HPS 70W MH 100W MH 150W PMH 250W PMH 300W qrtz. T-4 mini-can
Voltage	E H	120V 277V

* Please note when ordering fixture, insert finish code where _ is in the ordering guide example. Also, please disregard the A and second HS in the ordering guide example.

*2 Ballast remotored in inground ballast box.

*3 Available only in 120V.

Specifications

HOUSING:

Die-cast aluminum. Integral cast hinge with stainless steel pins is concealed internally and allows easy access for relamping. Aluminum die-cast. Locking teeth provide adjustment by tightening one (1) stainless steel recessed screw. 1/4-14" NPS stainless steel threaded nipple provides secure mounting. One-piece die-cast aluminum. Hinged doorframe is secured to the housing by four (4) stainless steel recessed captive Phillips-head screws. One piece molded silicone gasket between the housing and doorframe provides a long-lasting weather-tight seal.

FINISH:

Thermoset polyester powdercoat is electrostatically applied after a five-stage conversion cleaning process and bonded by heat fusion thermosetting. For larger projects where a custom color is required, contact the factory for more information.

OPTICAL ASSEMBLY:

1/8" tempered silicone glass. One-piece molded silicone gasket and spring clips. Formed from highly reflective Hammertone aluminum and semi-specular kick plates. Reflector assembly is secured to the housing with four (4) stainless steel screws.

ELECTRICAL ASSEMBLY:

Mogul base phenolic socket with nickel-plated screw shell and center contact. Mounted directly onto the reflector assembly and are UL recognized for appropriate lamps. Mounted directly to the housing and pre-wired with leads extending from the swivel arm. All electrical components are UL, cUL recognized.

BALLAST:

All HID ballasts are core and coil and regulated with power factors better than 90% (HPF). Ballast provides +/- 5% lamp power regulation with +/- 10% input voltage regulation. Ballasts are factory pre-wired and tested. Metal halide ballasts are capable of starting at -20° F or -30° C and HPS at -40°F or -40°C. NOTE: All ballasts are EISA / Title 20 / Title 24 compliant where applicable.

WARRANTY:

Three-year limited warranty.

CERTIFICATIONS:

ETL listed to U.S. safety standards for wet locations. cETL listed to Canadian safety standards for wet locations. Manufactured to ISO 9001:2008 Standards.

Height :

11 3/16" (284mm)

Aluminum Floodlyte (WA3) Specification Sheet

Project Name:	Location:	MFG: Philips Hadco
Fixture Type:	Catalog No.:	Qty:

Width:
9" (229mm)

Length:
16 13/16" (427mm)

Max. Weight:
18 lb.



Note: Philips reserves the right to modify the above details to reflect changes in the cost of materials and/or production and/or design without prior notice.
100 Craftway Drive, Littlestown, PA 17340 | P: +1-717-359-7131 F: +1-717-359-9289 | <http://www.hadco.com> | Copyright 2013 Philips
HW2