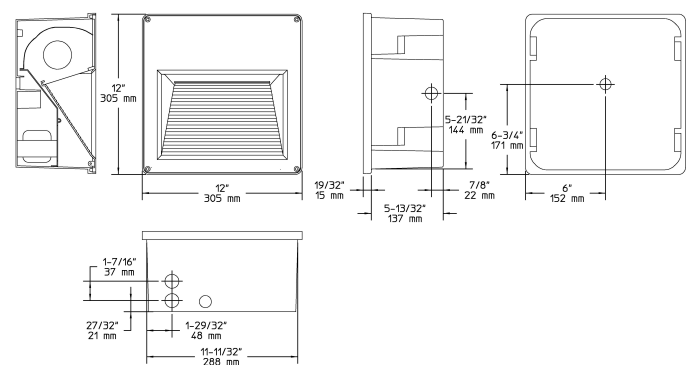


# Aluminum Steplyte ((DISCONTINUED) EWR4) Specification Sheet

Project Name:	Location:	MFG: Philips Hadco
Fixture Type:	Catalog No.:	Qty:



## Ordering Guide

Example: (DISCONTINUED) EWR4 039MH A 120 P

Product Code	(DISCONTINUED) Aluminum Steplyte EWR4	
Wattage	039MH	39W MH
	050MH	50 MH
	070MH	70W MH
	070TMH	70W MH
	100MH	100W MH
	035HPS	35W HPS
	050HPS	50W HPS
	070HPS	70W HPS
	100HPS	100W HPS
	032F	32W CFL
	042F	42W CFL
Finish	A	Black
	B	White
	H	Bronze
Voltage	120	120 Volts
	277	277 Volts
	220 50HZ	220 50 hz Volts
	208	208 Volts
	240	240 Volts
	347	347 Volts
Thermal Protection	P	Thermal Protection Device

\*1 Insulation protector is required for installations in drywall, plaster, wood or other non-masonry materials with the exception of fluorescent lamping and must be ordered as an option - add the suffix "P" to the catalog number. Available in 120/277v only.

\*2 Available in 50, 70, 100 HPS and 70, 100 MH only.

## Specifications

- HOUSING:**  
Fasteners are 300 series stainless steel. Semi-recessed water tight die-cast aluminum with polycarbonate lens. Hinges allow for easy re-lamping. Gasketing is silicone. One (1) ½" NPT conduit tap on the back, two (2) ¾" NPT taps on the bottom and one (1) ¾" NPT tap on each side for easy through-wiring.
- FINISH:**  
Thermoset polyester powdercoat is electrostatically applied after a five-stage conversion cleaning process and bonded by heat fusion thermosetting. Laboratory tested for superior weatherability and fade resistance in accordance with ASTM B117 specifications.
- OPTICAL ASSEMBLY:**  
Frosted tempered glass lens. Specular aluminum segmented reflector assembly.
- ELECTRICAL ASSEMBLY:**  
32W Fluorescent socket is a GX24Q-3 base. 42W Fluorescent socket is a GX24Q-4 base. 4kv rated porcelain mini-can base. Nickel-plated screw shell with center contact.
- BALLAST:**  
HID ballasts are HPF core and coil, factory wired and tested, mounted to a key-slotted removable tray with quick disconnect for easy installation. Ballasts shall provide +/-5% lamp power regulation with +/-10% input voltage regulation. Fluorescent ballast is electronic (-20° F cold weather start).
- WARRANTY:**  
Three-year limited warranty.
- CERTIFICATIONS:**  
ETL listed to U.S. safety standards for wet locations. cETL listed to Canadian safety standards for wet locations. Manufactured to ISO 9001:2008 Standards. ADA Compliant when used in indoor and outdoor wall applications.

**Height :**  
12" (305mm)

**Width:**

# Aluminum Steplyte ((DISCONTINUED) EWR4) Specification Sheet

Project Name:	Location:	MFG: Philips Hadco
Fixture Type:	Catalog No.:	Qty:

12" (305mm)

**Depth:**  
5 13/32" (137mm)

**Max. Weight:**  
4.1 lbs.



Note: Philips reserves the right to modify the above details to reflect changes in the cost of materials and/or production and/or design without prior notice.  
100 Craftway Drive, Littlestown, PA 17340 | P: +1-717-359-7131 F: +1-717-359-9289 | <http://www.hadco.com> | Copyright 2013 Philips  
HW2