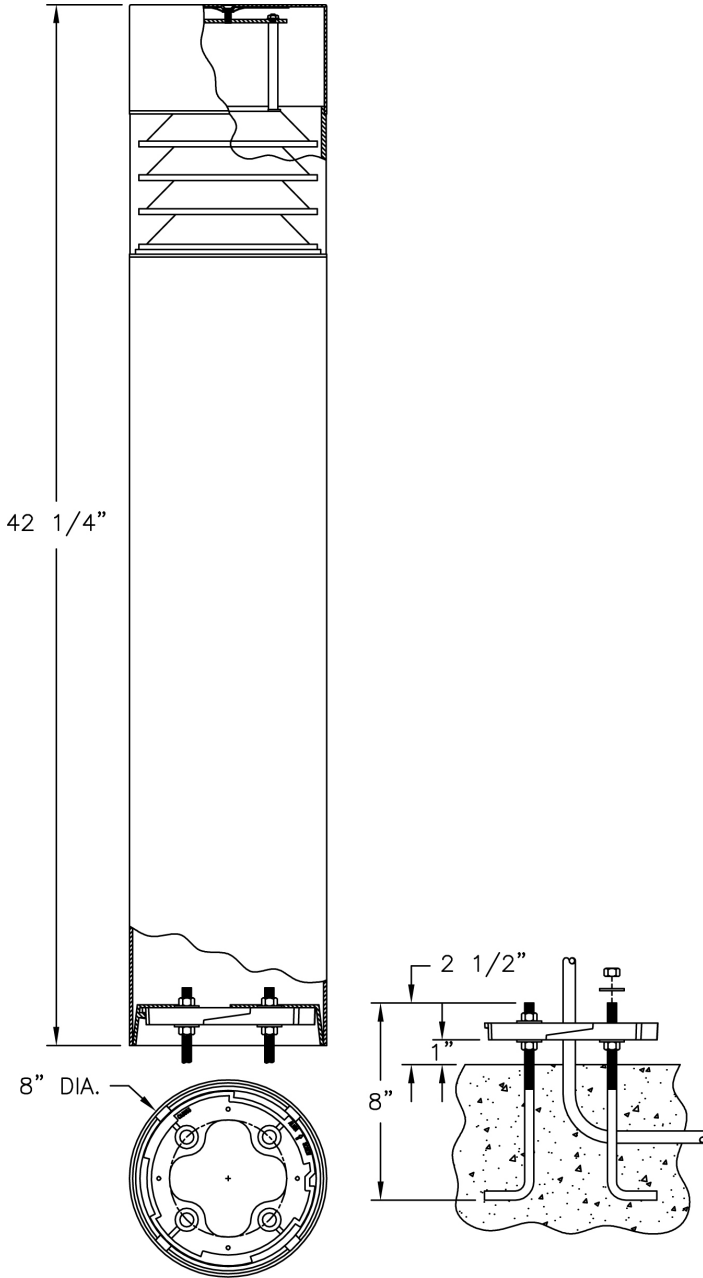


8" Round Bollard (160) Specification Sheet

Project Name:	Location:	MFG: Philips Lighting
Fixture Type:	Catalog No.:	Qty:



Ordering Guide

Example: 160 ABS A D 50H E B

Product Code	160	8" Round Bollard
Finish	ABS ACP ARD ASI BLK BRN BRZ FGN GRA IRN RBZ SRT VBZ VCP VGN VTC WHT WBZ	Antique Brass Antique Copper Antique Red Antique Silver Black Brown Bronze Forest Green Granite Ironstone Rustic Bronze Shadow Rust Verde Bronze Verde Copper Verde Vintage Copper White Weathered Bronze
Panel/Globe	A	Clear Acrylic
Socket	D F	Medium Fluorescent
Wattage/Source	50H 70H 100H 35S 50S 70S 100S 100I 26F 32F 42F	50W MH 70W MH 100W MH 35W HPS *1 50W HPS 70W HPS 100W HPS 100W INC. *1 26W *2 Fluorescent 32W *2 Fluorescent 42W *2 Fluorescent
Voltage	E F G H	120V 208V 240V 277V
Distribution	B C LS LW V	8" Type V - Refractor Bowl 8" Type III - Refractor Bowl Type V - Louver Specular Type V - Louver White Type V - Cone

*1 120V (E) Voltage Only
*2 Only Optic (B, C, LS, LW) available and (F) Socket for Fluorescent Models

Specifications

CONSTRUCTION:

Aluminum roof and stationary cast aluminum anchor base. 8" dia. x .125" wall extruded aluminum post. Black silicone gasket.

FINISH:

Resilient TGIC thermoset polyester powdercoat paint is electrostatically applied to every fixture. Specially formulated for Philips Outdoor Lighting, it provides UV protection, and

8" Round Bollard (160) Specification Sheet

Project Name:	Location:	MFG: Philips Lighting
Fixture Type:	Catalog No.:	Qty:

the highest temperature rating in the industry. In addition to the standard color choices shown, a spectrum of custom colors is available.

PANELS/LENS/GLOBE:

8" dia. Clear Acrylic Lens.

LAMPING:

Lamp is not included.

ELECTRICAL ASSEMBLY:

Lantern will be pre-wired and tested. All electrical components are ETL listed.

BALLAST:

Customer must specify wattage and voltage desired.

MOUNTING:

See template for dimensions & mounting instructions.

WARRANTY:

Three-year limited warranty.

CERTIFICATIONS:

ETL Listed to U.S. safety standards for wet locations. cETL Listed to Canadian safety standards for wet locations.

Bolt Circle:

4 3/4" dia.

Anchor Rods:

(4) 3/8" x 8" long galvanized steel

Base Dimensions:

8" dia.

Height:

42 1/4"