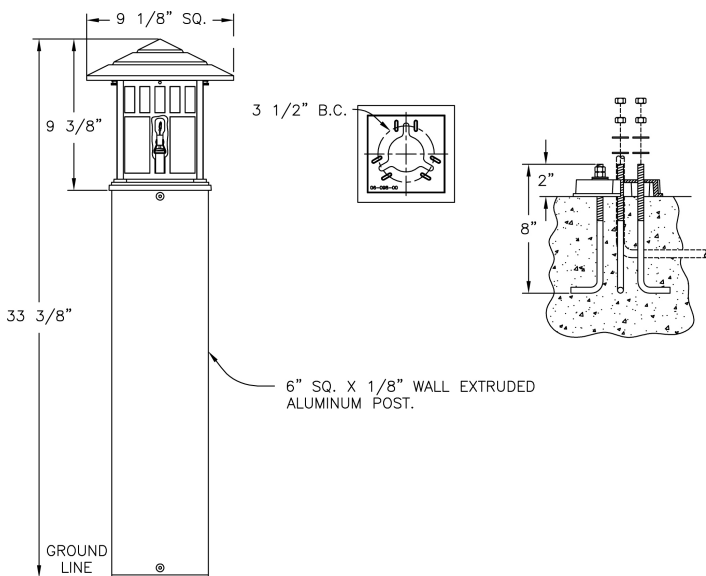


# Bollards ((DISCONTINUED) 28485) Specification Sheet

Project Name:	Location:	MFG: Philips Lighting
Fixture Type:	Catalog No.:	Qty:



## Ordering Guide

Example: (DISCONTINUED) 28485 WBZ A D 50H E

Product Code	(DISCONTINUED) Bollards 28485	
<b>Finish</b>	WBZ	Weathered Bronze
	ABS	Antique Brass
	ACP	Antique Copper
	ARD	Antique Red
	ASI	Antique Silver
	BLK	Black
	BRN	Brown
	BRZ	Bronze
	FGN	Forest Green
	GRA	Granite
	IRN	Ironstone
	RBZ	Rustic Bronze
	SRT	Shadow Rust
	VBZ	Verde Bronze
	VCP	Verde Copper
	VGN	Verde
	VTC	Vintage Copper
	WHT	White
<b>Panel/Globe</b>	A	Clear Acrylic
	B	Opal Acrylic
	C	Clear Seeded Acrylic
	D	Bronze Tone Acrylic
	F	Frosted Glass
	H	Opalescent Honey Glass
	K	Clear Seeded Glass
	L	Opal Iridescent Glass
	M	Opal Polycarbonate
	P	Clear Polycarbonate
<b>Socket</b>	D	Medium
	F	Fluorescent
<b>Wattage/Source</b>	50H	50W MH
	70H	70W MH
	35S	35W HPS *1
	50S	50W HPS
	70S	70W HPS
	60I	60W INC. *1
	26F	26W Fluorescent *2
	32F	32W Fluorescent *2
	42F	42W Fluorescent *2
<b>Voltage</b>	E	120V
	F	208V
	G	240V
	H	277V

\*1 120V (E) Voltage Only

\*2 Only (F) Socket for Fluorescent Models

## Specifications

# Bollards ((DISCONTINUED) 28485) Specification Sheet

Project Name:	Location:	MFG: Philips Lighting
Fixture Type:	Catalog No.:	Qty:

**CONSTRUCTION:**

Cast aluminum square roof. Cast aluminum square cage with grills attached to square cage bottom. 6" sq. x 1/8" wall thickness extruded aluminum post. Cast aluminum 6" square anchor base supplied with anchor bolts.

**FINISH:**

Resilient TGIC thermoset polyester powdercoat paint is electrostatically applied to every fixture. Specially formulated for Philips Outdoor Lighting, it provides UV protection, and the highest temperature rating in the industry. In addition to the standard color choices shown, a spectrum of custom colors is available.

**PANELS/LENS/GLOBE:**

See lenses for available options.

**LAMPING:**

Lamp is not included.

**ELECTRICAL ASSEMBLY:**

Lantern will be pre-wired and tested. All electrical components are ETL listed.

**BALLAST:**

Customer must specify wattage desired.

**MOUNTING:**

See template for dimensions & mounting instructions.

**WARRANTY:**

Three-year limited warranty.

**CERTIFICATIONS:**

ETL Listed to U.S. safety standards for wet locations. cETL Listed to Canadian safety standards for wet locations.

**Bolt Circle:**

3 1/2" dia.

**Anchor Rods:**

(3) 3/8-16 zinc plated steel

**Base Dimensions:**

6" sq.

**Height:**

33 3/8"