



Type No. _____

Job Name _____

Catalog No. _____



Shown: EGN8



EG

Recessed Par 36 Adjustable Emergency Unit

6 Volt Self-Contained Recessed Gimbal Fixture

Housing

- Aluminum housing and gimbal assembly with a compact, low profile design
- Trim ring and gimbal assembly are standard with a matte white finish
- Mounting clips provided for direct installation
- Easy recessed installation in sheetrock or mechanical ceilings
- Trim kit included for plaster and sheetrock ceiling installation

Battery

- Maintenance-free sealed lead calcium or nickel cadmium battery
- Supplies 90 minutes of emergency power
- Sealed lead calcium battery has an estimated service life of 5 years
- Nickel cadmium battery has an estimated service life of 10 years
- Operating temperature range of 65°F (19°C) to 85°F (30°C)

Application

- Commercial locations where an adjustable recessed emergency lighting unit is desired

Warranty

- Electronics: 1 year
- Sealed lead calcium battery: 1 year full, 4 years pro-rata
- Nickel cadmium battery: 5 year full, 5 years pro-rata

Electronics

- 120/277 VAC dual voltage input capability
- Surge-protected solid-state charger restores battery to full charge within UL 924 specifications
- Brownout protection activates lights when AC voltage drops 20% below nominal
- Low voltage disconnect prevents deep battery discharge
- AC indicator lamp and test switch
- All electronics are completely self-contained

Electrical Specifications

- 120 VAC - 0.08 A, 8.4 W
- 277 VAC - 0.03 A, 8.8 W

Code Compliance

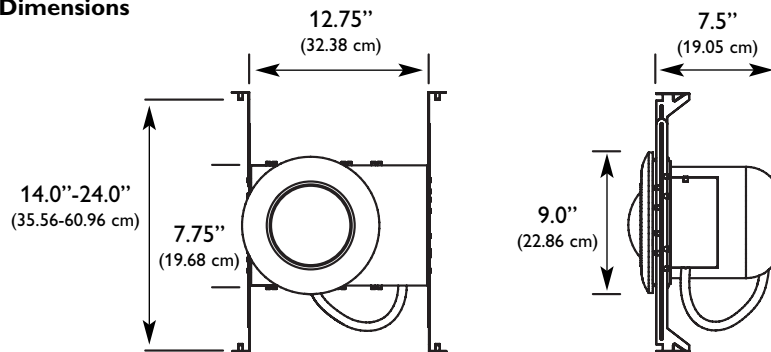
- UL 924 listed
- NFPA 101, NEC, BOCA, OSHA, and IBC illumination standards
- Model EG12C is City of Chicago Environmental Airspace (CCEA) listed

Ordering Information

EG		
SERIES	BATTERY TYPE	LAMP TYPE
EG = Recessed Gimbal	Blank = Lead Calcium 12 W N = Nickel Cadmium	7 = 6 V, 7 W Tungsten 8 = 6 V, 8 W Halogen 12C = 6 V, 12 W Tungsten ¹

NOTE: 1) 12C model only available with lead calcium battery.

Dimensions



Dimensions are approximate and subject to change.

Suggested Specification

Furnish and install LighGuard's decorative emergency lighting model EG. The unit shall be constructed to meet Underwriter's Laboratories, Inc. Standard #924 and the National Electrical Code (NEC).

INSTALLATION AND OPERATION - Unit shall be easily field connected to a 120 or 277 VAC, 60 Hz, unswitched power source. Installation must comply with the NEC as well as other applicable codes. (Emergency Operation Only) - Upon utility power failure or brownout, the unit shall automatically transfer to battery power and maintain the required illumination for a minimum period of 90 minutes. Upon restoration of utility power, the charger shall restore the battery to full charge within UL 924 requirements following a rated discharge of not more than 90 minutes.

CHARGER (Emergency Operation Only) - Product shall utilize a fully automatic, solid-state charging system which will maintain the battery at full capacity without the need for periodic exercising or equalization. The following features shall be standard: low voltage disconnect (LVD), brownout protection and AC lockout.

BATTERY (Emergency Operation Only) - The battery shall be a maintenance-free, sealed lead calcium or nickel cadmium with an optimum operating temperature range of 65°F (19°C) to 85°F (30°C). Sealed lead calcium battery shall be provided with a one year warranty while the nickel cadmium battery shall be provided with a five year warranty.

ILLUMINATION - The EG shall incorporate a sealed beam halogen or tungsten lamp. The lamp shall be adjustable in two planes up to 26°.

HOUSING - The housing and gimbal assembly shall be constructed of aluminum. A matte white finish is standard. Mounting clips shall be provided for direct installation.

ALL SPECIFICATIONS SUBJECT TO CHANGE WITHOUT NOTICE



272 West Stag Park Service Road • Burgaw, NC 28425
(910) 259-1131 • FAX (800) 403-6927
www.lightguard.com

L2106R11
1/12 IH