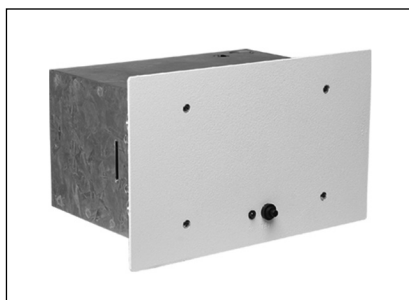




Type No. \_\_\_\_\_

Job Name \_\_\_\_\_

Catalog No. \_\_\_\_\_



Shown: LPM50LV



# LPM

- Emergency Power for Support of Egress Lighting
- 12 Volt, 50 and 75 Watts
- Sealed Lead Calcium Battery

## Housing

- The LPM rough-in enclosure is fabricated from 20 gauge die formed galvanized steel
- The trim plate is fabricated from 12 gauge steel
- Available with choice of white or black trim plate colors
- Knockouts for conduit as well as screw hole knockouts for mounting to joists are conveniently location on the backbox
- The LPM meets the Buy American requirements

## Battery

- Maintenance free, sealed lead calcium battery has an expected service life of 5 years

## Illumination

- \* See selections on back page
- Suggested emergency power source for the “NightWatch” interior/exterior low level LED luminaire, the “LEF” MR16 exterior wall/soffit remote, and the “LRE” recessed MR16 exterior remote
- Any 12 VDC remote emergency luminaire can also be powered by the LPM
- The connected remote load must not exceed the capacity rating of the LPM product

## Electrical Specifications

- LPM50 - (120 VAC) 0.22 A, (277 VAC) 0.11 A
- LPM50DL - (120 VAC) 0.21 A, (277 VAC) 0.11 A
- LPM75 - (120 VAC) 0.22 A, (277 VAC) 0.11 A

## Ordering Information

LPM		L			
SERIES	OUTPUT WATTAGE	BATTERY	HOUSING COLOR	OPTIONS	ACCESSORIES (ORDER AS A SEPARATE ITEM)
LPM = LightGuard Power Module	50 = 50 W Unit 75 = 75 W Unit	L = Sealed Lead Calcium	W = White B = Black	DL = Damp Location* TD = Time Delay (15 min)	BHK1 = Bar Hanger Kit for Mechanical Ceilings

\*Damp Location available on 50W version only

## Electronics

- 120/277 VAC, 60 Hz, dual input
- Utilizes an automatic voltage regulated charging system
- 2-state charger eliminates the need for periodic battery exercising
- Momentary test switch and normal power indicator lamp are located on the trim plate to assist testing and visual inspection
- Low voltage disconnect feature (LVD) prevents deep battery discharge

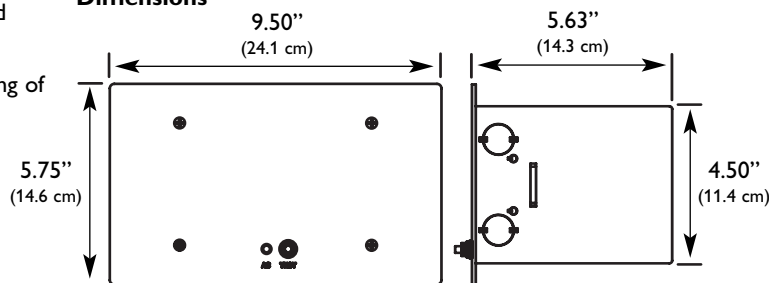
## Code Compliance

- UL 924 listed
- UL 924 damp location listed optional\* (50°F to 104°F)
- NFPA 101, NEC, BOCA, OSHA, and IBC illumination standards
- \* 50 W models only

## Warranty

- Electronics: 3 years
- Battery: 1 year full, 4 years pro-rata

## Dimensions

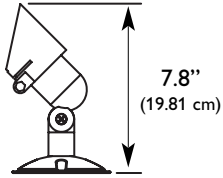


Dimensions are approximate and subject to change.

# Recommended product selection to be used with the LPM Series

## Additional "LEF Series" Luminaire Selections (MR16 Illumination)

\*Maximum of 75 W of connected luminaires can be operated by the LPM Series



Shown: LEF1RBZ20WF



Shown: LEF21RBZ20WF

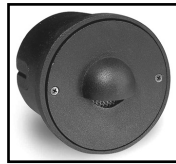
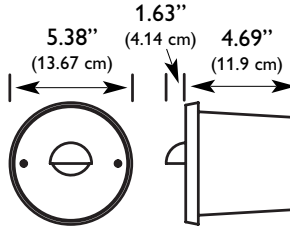
LEF					
SERIES	NUMBER OF HEADS	TYPE OF MOUNTING PLATE	COLOR	LAMP TYPE	ACCESSORIES (Ordered Separately)
LEF = Decorative Outdoor Remote Head	1 = Single Remote Head 2 = Double Remote Head	R = 4" Round Mounting Plate S = Single Gang Rectangular Mounting Plate	BK = Black BZ = Bronze	MR16 Halogen Lamps 20WF = 12 V, 20 W Wide Flood 40° 35FL = 12 V, 35 W Flood 25° 35WF = 12 V, 35 W Wide Flood 40° 50FL = 12 V, 50 W Flood 25° 50WF = 12 Volt, 50 Watt Wide Flood 40° MR16 LED Lamp 7F = 12 V, 7 W LED Flood 35°	ORBBK = Outdoor 4" Round Surface Mount Junction Box, Black ORBBZ = Outdoor 4" Round Surface Mount Junction Box, Bronze OSBBK = Outdoor Single Gang, Surface/Recessed 2 1/4" x 4 1/2" Junction Box, Black OSBBZ = Outdoor Single Gang, Surface/Recessed 2 1/4" x 4 1/2" Junction Box, Bronze

## Additional "LRE Series" Luminaire Selections (MR16 Illumination)

\*Maximum of 75 W of connected luminaires can be operated by the LPM Series

\*Lamps sold separately

SERIES
LREBK = Outdoor Remote Head Recessed, Black LREBZ = Outdoor Remote Head Recessed, Bronze



Shown: LREBK

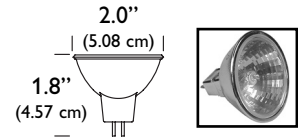
## MR16 Lamp Options

### Description

12 V, 20 W, 40° beam spread  
12 V, 35 W, 25° beam spread  
12 V, 35 W, 40° beam spread  
12 V, 50 W, 25° beam spread  
12 V, 50 W, 40° beam spread

### How to Order

12MR20WFL  
12MR35FL  
12MR35WFL  
12MR50FL  
12MR50WFL



## Additional "NightWatch" Luminaire Selections (White LED Illumination)

\*Maximum of (8) luminaires on high setting, can be operated by the LPM50 Series

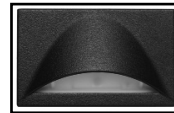
\*Maximum of (13) luminaires on high setting can be operated by the LPM75 Series

\*Consult factory for custom colors

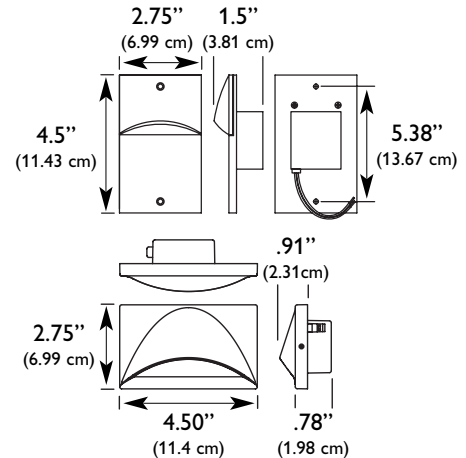
SERIES
S1SBK = Outdoor LED Luminaire, Black S1SWH = Outdoor LED Luminaire, White S1SIV = Outdoor LED Luminaire, Ivory SH1SBK = Outdoor LED Luminaire, Black SH1SWH = Outdoor LED Luminaire, White SH1SIV = Outdoor LED Luminaire, Ivory



Shown: S1SBK



Shown: SH1SBK



## Suggested Specification

Furnish and install LightGuard's recessed emergency lighting model \_\_\_\_\_. The unit shall be constructed to meet Underwriter's Laboratories, Inc standard 924 and the National Electrical Code (NEC).

**INSTALLATION AND OPERATION** - Unit shall be easily field connected to a 120 or 277 VAC, 60 Hz, unswitched power source. The installation must comply with the NEC as well as other applicable codes. Upon utility power failure or brownout, the unit shall automatically and instantaneously transfer to battery power and maintain the specified load for a minimum period of 90 minutes. Upon restoration of utility power, the charger shall restore the battery to full charge within UL 924 requirements following a rated discharge of not more than 90 minutes.

**CHARGING CIRCUITRY** - The product shall utilize a fully automatic, voltage regulated charging system. The charging system shall maintain the battery at full capacity without the need for periodic exercising or equalization. The following features shall be standard: low voltage disconnect (LVD), Brownout protection and a labor saving AC lockout which allows the contractor to fully connect the unit during installation prior to energizing the unit with utility line voltage.

**BATTERY** - The battery shall be sealed, maintenance-free lead calcium with a designed life of 5 to 7 years under ambient temperatures of 65°F to 85°F. The lead calcium battery shall be fully warranted for a period not less than one year.

**HOUSING** - The recessed back box shall be constructed of 20 gauge galvanized steel and be capable of installation into mechanical (T-bar) or sheet rock ceilings. The faceplate shall be constructed of 12 gauge steel and provide manual test switch and AC-on indicator status.

ALL SPECIFICATIONS SUBJECT TO CHANGE WITHOUT NOTICE



272 West Stag Park Service Road • Burgaw, NC 28425  
(910) 259-1131 • FAX (800) 403-6927  
www.lightguard.com

L2318R14  
5/12 IH