

# LIGHTOLIER

by  Signify

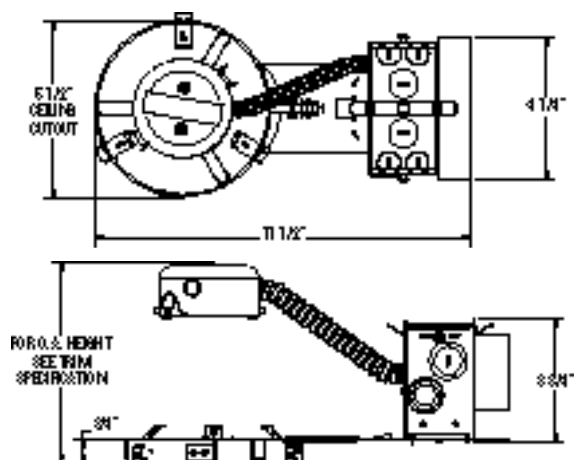
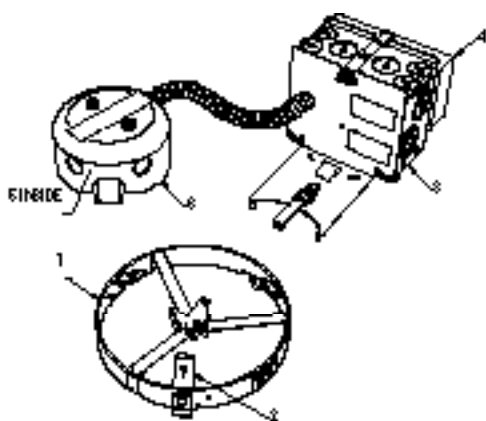
## Downlighting

Lytecaster CFL 5"

1001FR 1 Light, Non-IC Remodeler

Project: \_\_\_\_\_  
 Location: \_\_\_\_\_  
 Cat.No: \_\_\_\_\_  
 Type: \_\_\_\_\_  
 Lamps: \_\_\_\_\_ Qty: \_\_\_\_\_  
 Notes: \_\_\_\_\_

 **Uniframe**



Complete Fixture consists of Frame-In Kit and Reflector Trim. Select each separately.

Uniframe™ Frame-In Kit	Uniframe™ Compact Fluorescent Performance Series Reflector Trims							
	Vertical Open	Vertical Wall Wash - Single	Vertical Wall Wash - Double	Horizontal Open	Horizontal Wall Wash - Single	Horizontal Wet Location Lensed / Diffused		Horizontal Cross Blade
<b>1001FR18U</b> 18w Triple GX24q-2 Base 120v – 0.17amp max 277v – 0.08amp max  <b>1001FR26U</b> 26w Triple GX24q-3 Base 120v – 0.24amp max 277v – 0.11amp max	<b>1001CL</b> <b>1001CD</b> <b>1001WH</b>	<b>1001CLSW</b> <b>1001CDSW</b> <b>1001WHSW</b>	<b>1001CLDW</b> <b>1001CDDW</b> <b>1001WHDW</b>	<b>1001HCL</b> <b>1001HCD</b> <b>1001HWH</b>	<b>1001HCLSW</b> <b>1001HCDSW</b> <b>1001HWHSW</b>	Clear Lens <b>1001HCLC</b> <b>1001HCDC</b> <b>1001HWHC</b>  Opal Lens <b>1001HCL0</b> <b>1001HCDO</b> <b>1001HWHO</b>	Fresnel <b>1001HCLF</b> <b>1001HCDF</b> <b>1001HWHF</b>	<b>1001HACB</b> <b>1001HWHCB</b>
Universal Series Reflector Trims (Reference Trim Spec Sheet for Recommended Lamping)								
	Performance Cone	Cone	Satin Cone	Baffle	Wall Wash	Wet Location		
	1013CFL 1013CDCFL	1012* 1013* 1013BK* 1013WH 1013CD* 1071 1045 1046 1046CD	1008* 1010*	1005* 1005BNM 1005WH 1076 1076WH	1035 1035WH 1085 1095 1096 1096CD	1021** 1024 1078		

\*Add NM suffix to catalog number for Natural Metal flange and finish.

\*\*Only compatible with 18W Quad lamp.

# 1001FR Lytecaster CFL 5"

## 1 Light, Non-IC Remodeler

### Features

- 1. UniFrame™ Mounting Ring:** .032" (#22ga.) thick Galvanized Steel.

Accommodates existing ceilings up to 2" thick. Attaches securely to any type of ceiling material without tools using (3) mounting straps provided. Includes adhesive backed aperture template.

- 2. Trim Clips:** "Push In / Twist Out" clips hold reflector flush to ceiling.

- 3. Junction Box:** 2" x 4" x 3-1/2" (22cu.in.) .032" (#22ga.) galvanized steel. UL Listed for 90° C supply wire. Attaches to mounting ring without tools.

- 4. Ballast:** 120V – 277V UL Listed Electronic Ballast, end of lamp life protection, class "P" thermally protected, class "A" sound rating.

- 5. Socket:** Four-pin base, molded thermoplastic socket, prewired with No. 18 AWM leads to ballast.

- 6. Socket Housing:** .036" (#20ga.) Galvanized Steel housing attaches to reflector trim by spring clip for precise optic alignment.

### Labels

**cULus Listed.** Suitable for Damp Locations.

