

Catalog No.

Finishes	Plain Track			Feed Track		
	4'	8'	12'	4'	8'	12'
Matte White	26604WH	26608WH	26612WH	26601WH	26602WH	26613WH

Features

- Track:** 6063T-5 structural aluminum extrusion; average wall thickness .08.
- Conductors:** "U" shaped copper conductor, increases contact surface area minimizes contact resistance provides reliable positive connection.
- Insulated liner:** .040" wall, high temperature extruded thermoplastic.
- Dead End Cap:** molded thermoplastic.
- Feed Track:** Electrical module built-in. Feeds power to track. Maybe field cut. 7/8" dia. knockout accepts 3/8" or 1/2" electrical connector (by others)
- Plain Track:** May be field cut.
- Hanger Clip:** Item No. 26090. Heavy duty steel. For mounting track by cable.
- Feed-in Connector Module:** included with feed track.
- Metal Spline:** included with Plain and Feed Track. Locks track together.
- Wire Cover:** molded thermoplastic, included with all track connectors.
- Mounting Strap:** included with Plain and Feed Track.

Mechanical

Track units plug together and lock securely to prevent accidental separation. Track units may be field cut. ProSpec® track fixtures can be attached at any point along the track. Flush adapters can be inserted in any orientation to access the circuit desired. Lever identifies which circuit is being used and is easily observed from floor.

Electrical

(2) circuits. Each circuit is 120V, 60Hz, 20 AMP compatible. Each circuit has dedicated neutral for maximum control flexibility. Track units are continuously grounded throughout. Electrical conductors are concealed in an insulated liner in the track. Intended for wiring to branch circuit building wire with ground, in accordance with National and local codes.

Mounting

Recessed Track may be mounted in dry ceiling systems only. The track may be installed in insulated ceilings. There are three methods of mounting. (see page 2)

- Direct Mounting:** field drill holes in the track and mount directly to a structural member above track.
- Mounting Straps:** (included with plain and feed track) slide into the side channel of the track and may be fastened to the building structure.
- Cable Mounting:** using the hanger clip (sold separately) which mounts on top of the track. Ceiling cable or wire is fastened to the hanger clip and building structure.

Finish

All painted finishes are baked enamel.

Labels

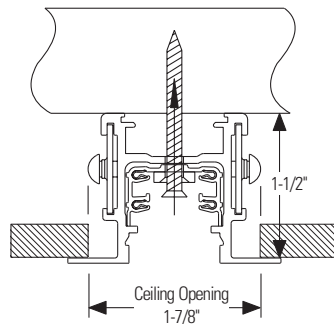
UL; I.B.E.W.

Job Information	Type:
Job Name:	
Cat. No.:	
Lamp(s):	
Notes:	

Lightolier a Genlyte company
 631 Airport Road, Fall River, MA 02720 • (508) 679-8131 • Fax (508) 674-4710
 We reserve the right to change details of design, materials and finish.
 © 2005 Genlyte Group LLC • A0705

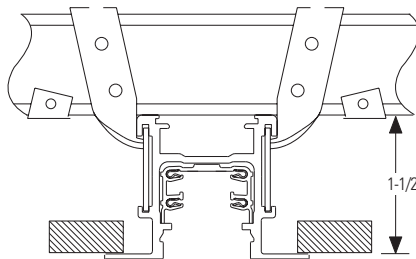
Recessed Track Mounting Systems**Direct Mounting**

Requires field drilling of mounting holes and mounting hardware. Nylon insulators are provided with the Feed and Plain Track to insulate the mounting screws. Use a number 6 flat head or round head screw. The screw should be suitable for the surface to which it will be attached. **DO NOT USE PLASTIC SCREWS.** Steel screws are recommended. Recommended number of mounting holes: (2) per 4' track, (3) per 8' track, and (4) per 12' track. The holes should be evenly spaced along the track length. Do not exceed 4' between supports. Additional supports may be added for heavily loaded applications. Nylon insulators included; (3) per 4' track, (4) per 8' track, (5) per 12' track.

**Mounting Straps****Stamped Steel**

Supplied with Feed Track and Plain Track. (6) per 4' Track, (8) per 8' Track, and (12) per 12' Track.

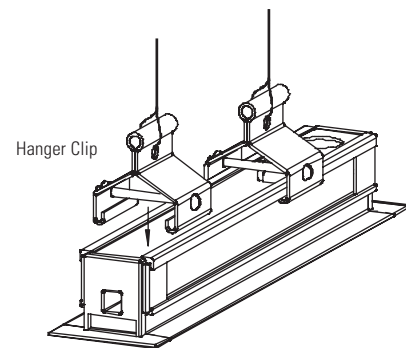
Mounting straps slide into the side channels of the track. They can be formed and attached to the building structure using screws, nails or by wrapping around a structure. They should be positioned evenly along the track length during mounting to balance the load placed on the track. **DO NOT EXCEED 4' BETWEEN MOUNTING STRAPS.**

**Cable Mounting**

HANGER CLIPS are not supplied with the track units. ORDER SEPARATELY. (4) clips and locking screws per catalog number.

Hanger clips attach at any point along the top of the track. Cable or wire (by others) is attached to the Hanger Clip and building structure. Recommended number of clips (2) per 4' track, (3) per 8' track, and (4) per 12' track. Space the mounting clips evenly along the track. **DO NOT exceed 4' between Hanger Clips.**

26090 Set of (4)

**Job Information****Type:**

Lightolier a Genlyte company

www.lightolier.com

631 Airport Road, Fall River, MA 02720 • (508) 679-8131 • Fax (508) 674-4710

We reserve the right to change details of design, materials and finish.

© 2005 Genlyte Group LLC • A0705

Recessed Track Power Feed Systems

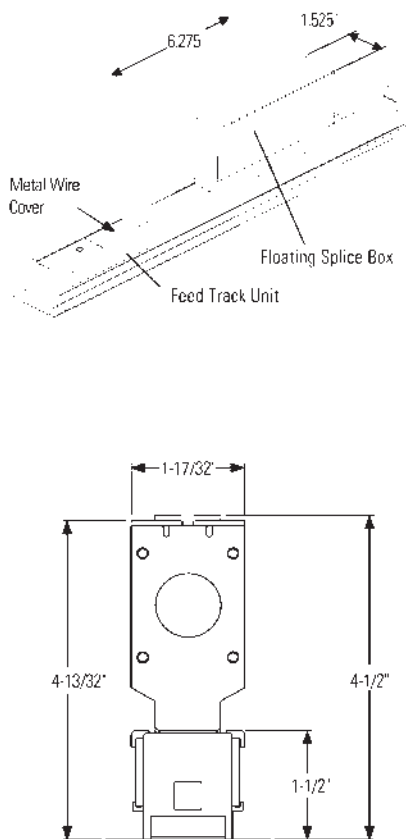
Floating Splice Box

The Floating Splice Box is used to feed the track from a point located away from the track end. Hardware is supplied to mount the splice box a maximum of 4' from the feed end of the track. (5) 7/8" diameter knock outs are available to accept standard 3/8" or 1/2" trade size electrical connectors (by others). The splice box has a wiring volume of 21.34 cu. in. (5) 12 ga. wires max. may be installed in the wire channel of the track.

NOTE: THERE MUST BE ACCESS ABOVE THE CEILING AFTER THE TRACK SYSTEM IS INSTALLED WHEN USING THE FLOATING SPLICE BOX. REQUIRED FOR FUTURE SPLICE MAINTENANCE AND INSPECTION.

(4) 12" pieces (4' total) of galvanized sheet steel wireway cover is included. Wireway cover may be field cut.

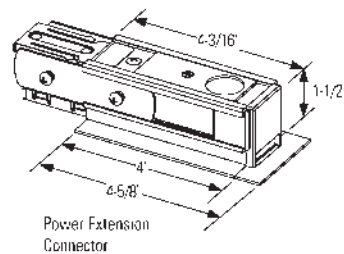
26660 Galvanized Steel



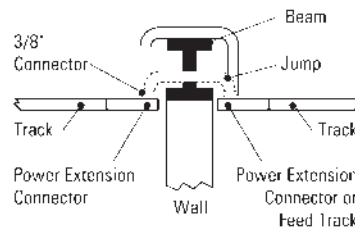
Power Extension Connector

The housing is crafted from .075 nominal wall 6063-T5 aluminum. Replaces the Dead End Cover at the end of the track to permit power continuity around structural obstructions to another track section. The connector is not polarized. Power can be fed into the connector from above using a 3/8" or 1/2" (trade size) connector (by others) or with the Floating Splice Box (26660).

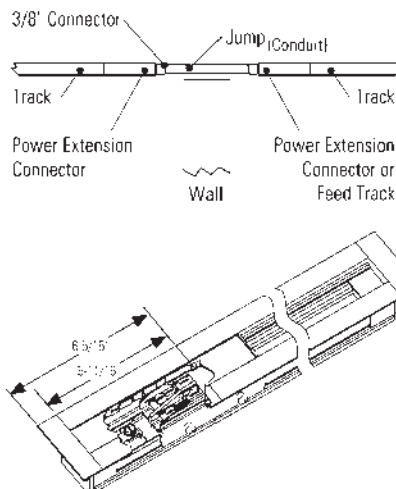
26646WH Matte White



Over Beam or Through Beam



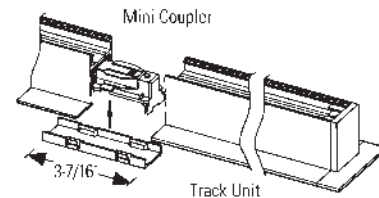
Through Wall or Column



Mini-Coupler

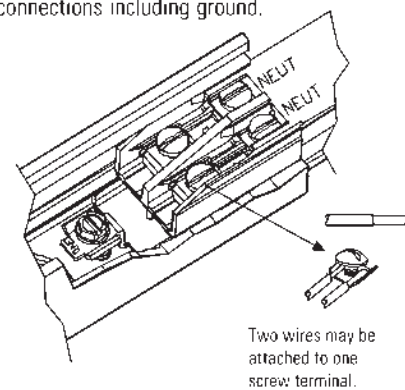
Used to connect two pieces of track together mechanically and electrically. Power cannot be feed into the mini-coupler.

26049WH Matte White



Detail A

Use 12 ga. solid copper wire for feed connections including ground.



Job Information

Type:

Lightolier a Genlyte company

www.lightolier.com

631 Airport Road, Fall River, MA 02720 • (508) 679-8131 • Fax (508) 674-4710

We reserve the right to change details of design, materials and finish.

© 2005 Genlyte Group LLC • A0705

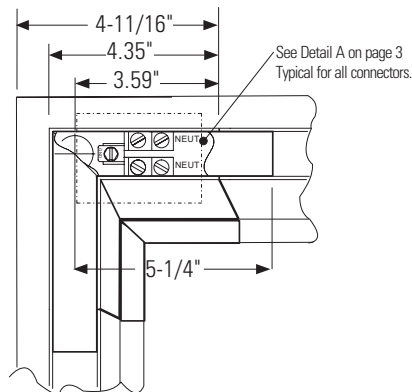
Feed Connectors for Surface and Stem Mounted Patterns

All connectors can be fed directly from above using a 3/8" or 1/2" electrical connector (by others).

"L" Connector

The "L" connector is pre-wired. Not polarized.

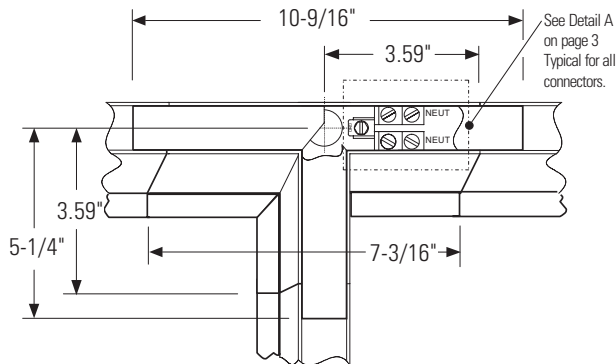
26650WH Matte White



"T" Connector

The "T" connector is not pre-wired or polarized. Used to make "T" pattern with track. 12 ga. copper jumper wires supplied to make all necessary connections.

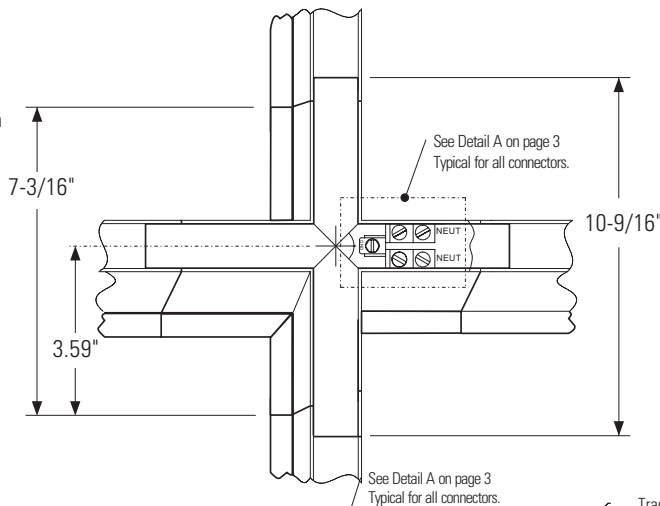
26651WH Matte White



"X" Connector

The "X" connector is not pre-wired or polarized. Used to make "X" pattern with track. 12ga. copper jumper wires supplied to make all necessary connections.

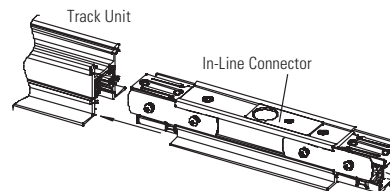
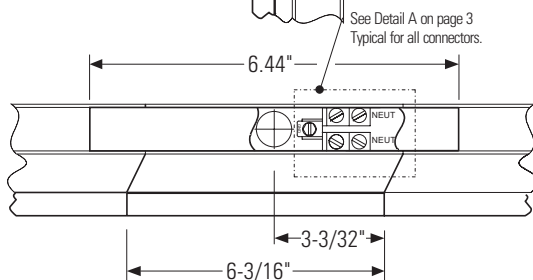
26652WH Matte White



In-Line Connector

Permits power feed-in between track units in a straight run of track. The "In-Line" connector is pre-wired. Not polarized

26654WH Matte White



Job Information

Type:

Lightolier a Genlyte company

www.lightolier.com

631 Airport Road, Fall River, MA 02720 • (508) 679-8131 • Fax (508) 674-4710

We reserve the right to change details of design, materials and finish.

© 2005 Genlyte Group LLC • A0705