

Catalog No.

Finishes	Plain Track			Feed Track		
	4'	8'	12'	4'	8'	12'
Matte White	26804WH	26808WH	26812WH	26801WH	26802WH	26813WH
Matte Black	26804BK	26808BK	26812BK	26801BK	26802BK	26813BK

Features

- Track:** 6063T-5 structural aluminum extrusion; average wall thickness .08.
- Conductors:** "U" shaped copper conductor, increases contact surface area minimizes contact resistance provides reliable positive connection.
- Insulated liner:** .040" wall, high temperature extruded thermoplastic.
- Dead End Cap:** molded thermoplastic.
- Feed Track:** Electrical module built-in. Feeds power to track. May be field cut. 7/8" dia. knockout accepts 3/8" or 1/2" electrical connector (by others)
- Plain Track:** May be field cut.
- Hanger Clip:** Item No. 26090. Heavy duty steel. For mounting track by cable.
- Feed-in Connector Module:** included with feed track.
- Metal Spline:** included with Plain and Feed Track. Locks track together.
- Wire Cover:** molded thermoplastic, included with all track connectors.
- Mounting Strap:** included with Plain and Feed Track.
- Reversible Wing Brackets:** Accommodates 1/2" or 5/8" Gypsum Board.

Mechanical

Track units plug together and lock securely to prevent accidental separation. Track units may be field cut. ProSpec™ track fixtures can be attached at any point along the track. Flush adapters can be inserted in any orientation to access the circuit desired. Lever identifies which circuit is being used and is easily observed from floor.

Electrical

(2) circuits. Each circuit is 120V, 60Hz, 20 AMP compatible. Each circuit has dedicated neutral for maximum control flexibility. Track units are continuously grounded throughout. Electrical conductors are concealed in an insulated liner in the track. Intended for wiring to branch circuit building wire with ground, in accordance with National and local codes.

Mounting

Recessed Flangeless Track may be mounted in dry ceiling systems only. The track may be installed in insulated ceilings. There are three methods of mounting. (see page 2)

- Direct Mounting:** field drill holes in the track and mount directly to a structural member above track.
- Mounting Straps:** (included with plain and feed track) slide into the side channel of the track and may be fastened to the building structure.
- Cable Mounting:** using the hanger clip (sold separately) which mounts on top of the track. Ceiling cable or wire is fastened to the hanger clip and building structure.

Finish

All painted finishes are baked enamel.

Labels

UL; I.B.E.W.

Job Information

Type:

Job Name:

Cat. No.:

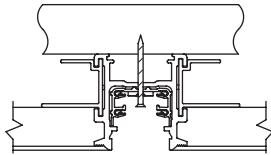
Lamp(s):

Notes:

Recessed Track Mounting Systems

Direct Mounting

Requires field drilling of mounting holes and mounting hardware. Nylon insulators are provided with the Feed and Plain Track to insulate the mounting screws. Use a number 6 flat head or round head screw. The screw should be suitable for the surface to which it will be attached. **DO NOT USE PLASTIC SCREWS.** Steel screws are recommended. Recommended number of mounting holes: (2) per 4' track, (3) per 8' track, and (4) per 12' track. The holes should be evenly spaced along the track length. Do not exceed 4' between supports. Additional supports may be added for heavily loaded applications. Nylon insulators included; (3) per 4' track, (4) per 8' track, (5) per 12' track.

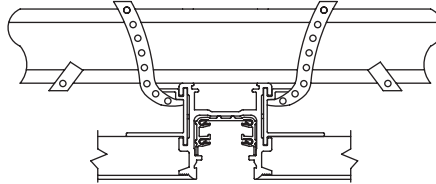


Mounting Straps

Stamped Steel

Supplied with Feed Track and Plain Track. (6) per 4' Track, (8) per 8' Track, and (12) per 12' Track.

Mounting straps slide into the side channels of the track. They can be formed and attached to the building structure using screws, nails or by wrapping around a structure. They should be positioned evenly along the track length during mounting to balance the load placed on the track. **DO NOT EXCEED 4' BETWEEN MOUNTING STRAPS.**

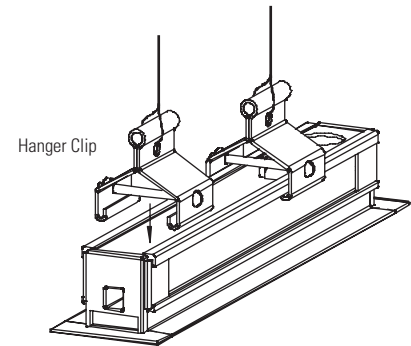


Cable Mounting

HANGER CLIPS are not supplied with the track units. ORDER SEPARATELY. (4) clips and locking screws per catalog number.

Hanger clips attach at any point along the top of the track. Cable or wire (by others) is attached to the Hanger Clip and building structure. Recommended number of clips (2) per 4' track, (3) per 8' track, and (4) per 12' track. Space the mounting clips evenly along the track. **DO NOT** exceed 4' between Hanger Clips.

26090 Set of (4)



Job Information

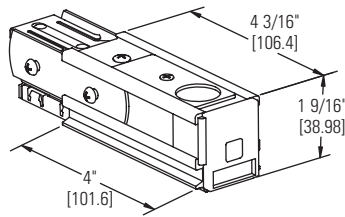
Type:

Recessed Track Power Feed Systems

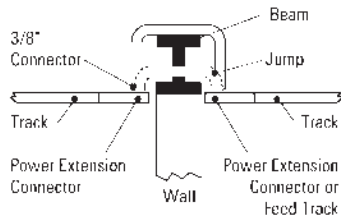
Power Extension Connector

The housing is crafted from .075 nominal wall 6063-T5 aluminum. Replaces the Dead End Cover at the end of the track to permit power continuity around structural obstructions to another track section. The connector is not polarized. Power can be fed into the connector from above using a 3/8" or 1/2" (trade size) connector (by others) or with the Floating Splice Box (26660).

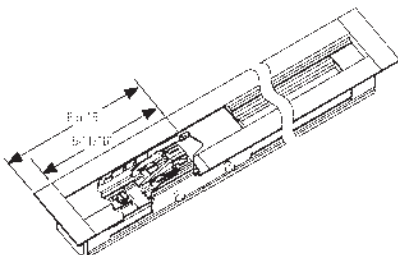
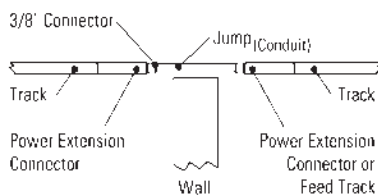
26846WH Matte White
26846BK Black



Over Beam or Through Beam



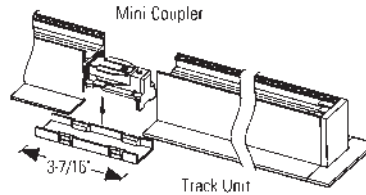
Through Wall or Column



Mini-Coupler

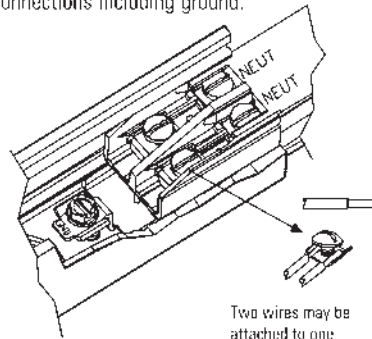
Used to connect two pieces of track together mechanically and electrically. Power cannot be feed into the mini-coupler.

26049WH Matte White



Supply Connections

Use 12 ga. solid copper wire for feed connections including ground.



Job Information

Type:

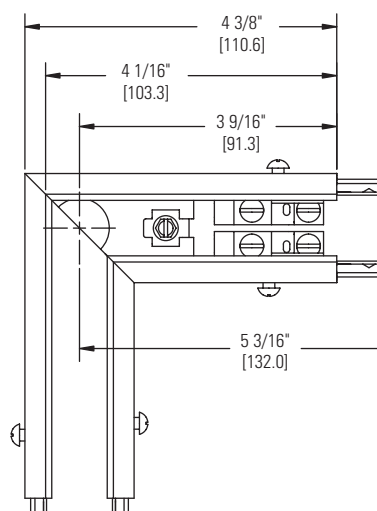
Feed Connectors for Recessed Flangeless Patterns

All connectors can be fed directly from above using a 3/8" or 1/2" electrical connector (by others).

"L" Connector

The "L" connector is pre-wired. Not polarized.

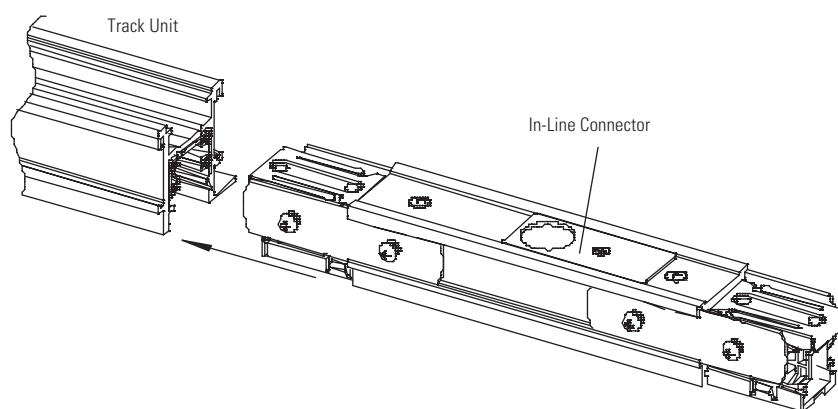
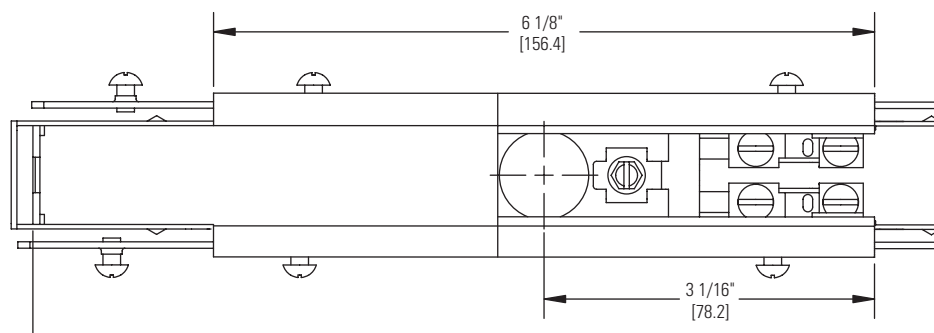
26850WH Matte White
26850BK Black



In-Line Connector

Permits power feed-in between track units in a straight run of track. The "In-Line" connector is pre-wired. Not polarized.

26854WH Matte White
26854BK Black



Job Information

Type: