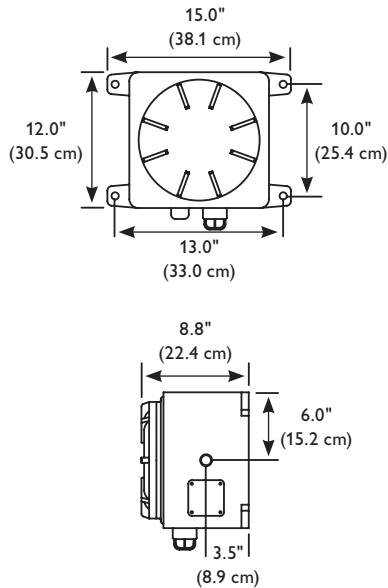
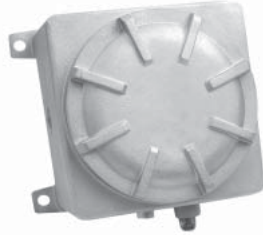


HC Series

Explosion-Proof Emergency Power Unit

Page 1 of 2

HC28N



Features

Illumination: Illumination is accomplished with incandescent or compact fluorescent F Series fixtures. The F Series fixtures must be ordered separately.

Housing: Copper-free cast aluminum enclosure designed to withstand the pressure of explosions generated by internal arc without propagating them into the hazardous atmosphere. Suitable for use in Class I, Div. 1, Groups C & D, Zones 0, 1 & 2, Groups IIA, IIB + H₂ & IIC; Class I, Div. 2, Groups C & D, Zone 2, Groups IIA, IIB + H₂ & IIC; Class II, Div. 1, Groups E, F & G; Class II, Div. 2, Groups F & G; and Class III hazardous location areas. Enclosure and cover are constructed separately. Cover is threaded to allow easy attachment and removal. Enclosure includes three threaded openings for 3/4" rigid conduit — one for AC input and two for mounting hazardous fixtures.

Operating Temperature

Range: Pure Lead Units
65°F (19°C) to 85°F (30°C)
Nickel Cadmium Units
20°F (-7°C) to 95°F (35°C)

Electronics:

120/277 VAC dual voltage input with surge-protected, solid-state circuitry provides for a reliable charging system. HC85P uses a temperature compensating charger. Charging system is complete with low voltage disconnect, AC lockout, brownout protection, AC indicator lamp and test switch. HC14N power pack operates 7 watt compact fluorescent hazardous fixtures in both AC and emergency modes. HC28N, HC50N and HC85P power units operate 6 and 12 volt incandescent hazardous fixtures in emergency mode only.

Electrical Specifications:

HC28N: (120 VAC) 0.15 A, 60 Hz, (120 VAC) 0.08 A, 60 Hz
HC50N, HC85P: (120 VAC) 0.33 A, 60 Hz, (120 VAC) 0.16 A, 60 Hz
HC14N: (120 VAC) 0.50 A, 60 Hz, (120 VAC) 0.25 A, 60 Hz

Code Compliance

UL 924, 844, 1203 and 1604 listed. NFPA 101, NEC, BOCA, OSHA and IBC illumination standards.

Warranty

Three year full electronics warranty. Five year full plus five year prorated nickel cadmium battery warranty. One year full plus four year prorated pure lead battery warranty.

Job Information	Type:
Job Name:	
Cat. No.:	
Notes:	

PHILIPS
LIGHTOLIER

HC Series

Explosion-Proof Emergency Power Unit

Page 2 of 2

Ordering Information

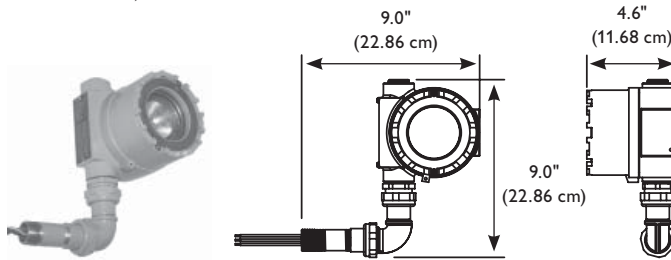
HC		
Series	Voltage/Battery	Factory Installed Options
HC = Hazardous Location Emergency Lighting Power Pack	6 Volt, Nickel Cadmium 14N = 14 W Power Pack, Compact Fluorescent Lamp Operation, AC and Emergency Operation ¹ 28N = 28 W Power Pack, Incandescent Lamp Operation, Emergency Operation Only 6 Volt, Pure Lead 85P = 85 W Power Pack, Incandescent Lamp Operation, Emergency Operation Only 12 Volt, Nickel Cadmium 50N = 50 W Power Pack, Incandescent Lamp Operation, Emergency Operation Only	EX = Special Input Transformer (specify voltage & frequency) T1 = 120 VAC Time Delay ² T2 = 277 VAC Time Delay ²

Note

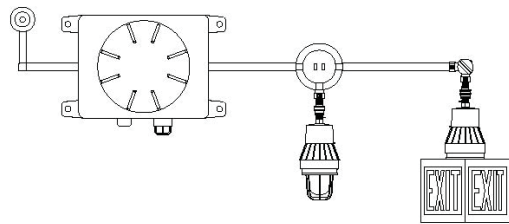
- 1) Compatible only with F Series fixtures using 7 W compact fluorescent lamps. Will not operate incandescent lamps. Maximum remote mounting distance from the HC14N is 8 feet.
- 2) 15 minute delay.

Accessories (order as a separate item)

OB3 = 3-Way Explosion Proof 3/4" Conduit Hub
SEA = Swivel Elbow Arm for Use With Pendant Mount Fixture to Connect to OB3 or HC Unit
EVL12 = 12 V, 12 W Directional Head



Sample Application



The sample application above consists of:

- (1) HC14N - 14 W power pack for exclusive use with compact fluorescent fixtures
- (2) SEA - elbow arms
- (1) FPHFP7 - 7 W compact fluorescent lamp fixture (operates in AC and emergency mode)
- (1) FPHFP7EFK - 7 W compact fluorescent lamp fixture with exit accessory (operates in AC and emergency mode)



Philips Lightolier
e: lol.webmaster@philips.com
t: (508) 679-8131
w: www.lightolier.com

HC Series May 4, 2012

Specifications are subject to change without notice.
© Koninklijke Philips Electronics N.V., 2012. All rights reserved.

Job Information **Type:**