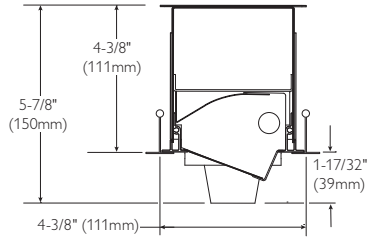


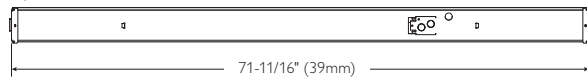
# Lytecel 4

## 72" Multi-Function Recessed, T5/T5HO, MR16/LED

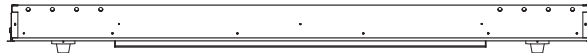
Page 1 of 2



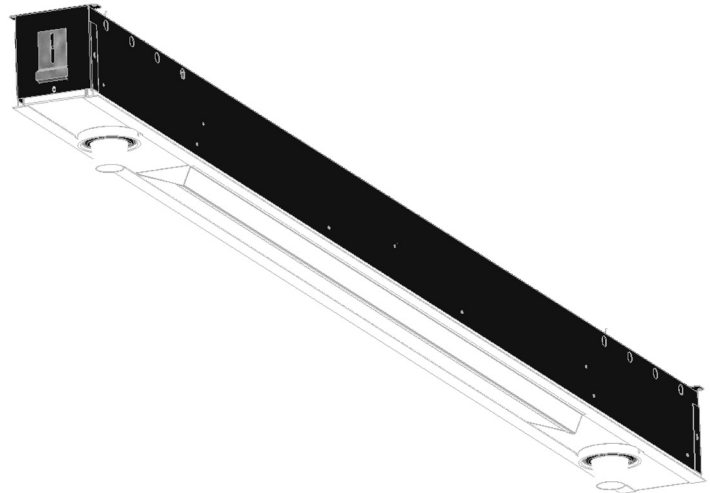
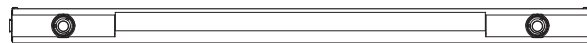
Top View



Profile



Room Side



### Ordering Information

Lytecel 4	Body Style	Fixture Size	Ceiling Type	Reflector	Lens Style	Spot Lamp <sup>1</sup>	Spot Wattage	Wall Wash	Wall Wattage	Voltage	Ballast Type	Options
<b>LI</b>	<b>S</b>	<b>4</b>	<b>G</b>	<b>A</b>	<b>K</b>			<b>1</b>			<b>PG</b>	-
Recessed Luminaire	S = Static	4 = 4" Width (Nominal size)	G = 9/16" or 15/16" Grid	A = Asymmetric	K = Frost Acrylic	M = MR16 L = LED	1 = 10 Watt LED 3 = 35 Watt MR16 5 = 50 Watt MR16	1 = 1 Lamp	28 = 28 Watt T5 54 = 54 Watt T5HO (Nominal 48")	120 = 120 volts 277 <sup>†</sup> = 277 volts	PG	Add appropriate suffix to catalog no., i.e.: (C) <10THD PG†
										1 Lamp Elec. T5 or T5HO, 28 or 54 watt		†Program Rapid Start

<sup>1</sup> Dimming not available for Spot lamp when 277 voltage is specified.

### Features

- Ideal for use in retail, patient care and hospitality environments.
- General wall wash illumination using linear T5 or T5HO fluorescent lamping with (2) adjustable accent MR16 or LED spot lamps allowing for flexibility in a multi-function space.
- Wall operated independent switching of fluorescent and accent spot lighting within fixture.
- Two part reflector system, flat white baked polyester enamel and specular anodized aluminum, create a smooth wall wash free of shadows.
- Narrow 4-3/8" width.
- Crisp frost white acrylic lens.
- Hold down clips.
- Lamps shielded for glare control.
- Black housing for cooler operating temperature.
- Ballast accessible from below ceiling.
- Individual mounting.
- Construction for Chicago plenum available.

Job Information	Type:
Job Name:	
Cat. No.:	
Notes:	

**PHILIPS**  
**LIGHTOLIER**

## 72" Multi-Function Recessed, T5/T5HO, MR16/LED

Page 2 of 2

### Specifications

**Materials: Chassis Parts**—Die-formed 20 gauge cold rolled steel. **End Caps**—20 gauge cold rolled steel. **End Trim**—Extruded aluminum.

**Finish: Chassis exterior**—Black baked polyester enamel.

**Reflector**—Flat white baked polyester enamel with specular anodized aluminum.

**Lens**—High light transmission frost white acrylic.

**Wall wash lamp**—One T5 or T5HO lamp per 4 foot section.

**Spot lamp**—Optional 10 watt LED MR16, 35 watt MR16 or 50 MR16. 10 Degree NSP. (Dimming not available for Spot lamp when 277 voltage is specified.)

**Labels:** I.B.E.W. UL and ULc Listed. UL listed for damp locations.

### Options & Accessories

**Access Plate:** Top Wiring access plate is shipped with fixture as standard. When access plates are required in advance for wiring convenience, specify separately.

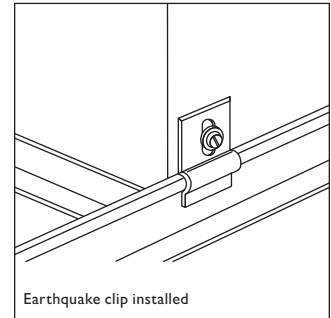
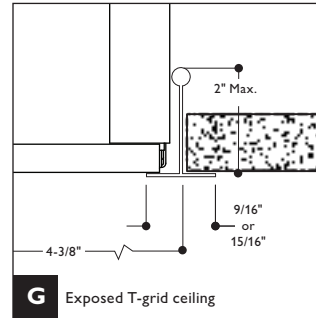
Order Catalog Number: **ACP5 CSP**.

**Electrical/Wiring Options:** Consult factory.

**Fusing:** Internal fast-blow fusing. Suffix: **A**.  
Internal slow-blow fusing. Suffix: **C**.

**Chicago Plenum:** Suffix: **C**.

### Mounting Options



Philips Lightolier  
e: [lol.webmaster@philips.com](mailto:lol.webmaster@philips.com)  
t: (508) 679-8131, Technical info. (978) 657-7600  
w: [www.lightolier.com](http://www.lightolier.com)

LIS4GAK-72 March 19, 2012

Specifications are subject to change without notice.  
© Koninklijke Philips Electronics N.V., 2012. All rights reserved.

**Job Information** **Type:**