

LMI Series

100 & 250 W INTERRUPTIBLE POWER SUPPLY

Page 1 of 2

LMI100R



LMI250S



LMI100T



Overall Characteristics

Features: Universal 120 or 277 VAC input and output. Operating temperature range of 68°F (20°C) to 86°F (30°C). Fused output connections. Normally on and/or normally off loads. Minimum 90 minutes of battery operating time. 91% nominal lumen output from luminaire.

Application: Operates incandescent, fluorescent, and LED lighting loads. Compatible with dimming ballasts. A versatile emergency power source option that can be located outside of critical spaces such as hazardous locations, extreme environments, or aesthetically sensitive areas. Hazardous locations include: painting facilities, clean rooms, chemical operations, and waste water treatment plants. Special requirement locations include: food processing, walk-in cooler/freezers, weatherproof/ exterior egress routes, schools, and strip malls. Decorative locations include: decorative/architectural fixtures in conference rooms and decorative/architectural fixtures in lobbies.

Housing: NEMA 1 enclosure with heavy duty steel cabinet and a standard white powder coat finish. Surface, recess, and grid ceiling mounting options available. Multiple conduit entries also available.

Battery: Maintenance free, sealed lead calcium battery (68°F to 86°F).

Inverter: Square wave output with completely solid-state inverter. Brownout protection is 75% of nominal line voltage. Standard low voltage disconnect (LVD) and DC overload and short circuit protection. Self-diagnostics is optional.

Charger: Variable rate, fully automatic, temperature compensated charger with a 24 hour battery recharge time.

Indicator/Controls:

Equipment status panel includes a momentary test switch, normally off load indicator, and an optional remote test switch.

Electrical Specifications:

100 W Models
(120 VAC) 60 Hz, 0.198 A
(277 VAC): 60 Hz, 0.080 A
250 W Models
(120 VAC) 60 Hz, 0.570 A
(277 VAC) 60 Hz, 0.268 A

Code Compliance

UL 924 listed. Meets NFPA 101, NEC, BOCA, OSHA, state and local codes.

Warranty

Three years full electronics warranty. One year full, four years pro-rata battery warranty.

Job Information Type:

Job Name:

Cat. No.:

Notes:

PHILIPS
LIGHTOLIER

LMI Series

100 & 250 W INTERRUPTIBLE POWER SUPPLY

Page 2 of 2

Ordering Information

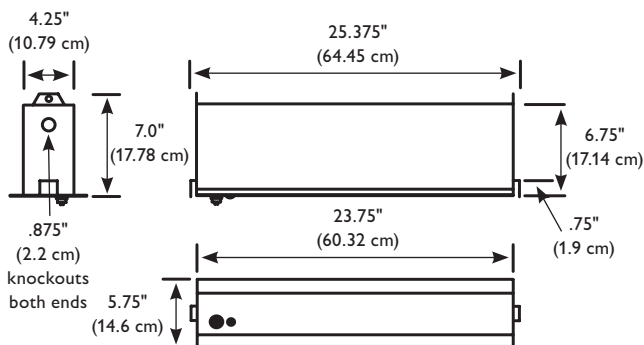
LMI				
Series	Output Wattage	Mounting Configuration	Factory Installed Options	Accessories (order as a separate item)
LMI = LMI Series	100 = 100 Watts	T = Ceiling Installation	SD = Self-Diagnostics	LIRT = Remote Test Switch
Inverter	250 = 250 Watts*	S = Surface Wall Mount	TD1 = 120 V 15 Minute Time Delay	Note
		R = Recessed Wall Mount	TD2 = 277 V 15 Minute Time Delay	* Available in surface mount only.
			SP = Special Paint (consult factory)	

System Input/Output

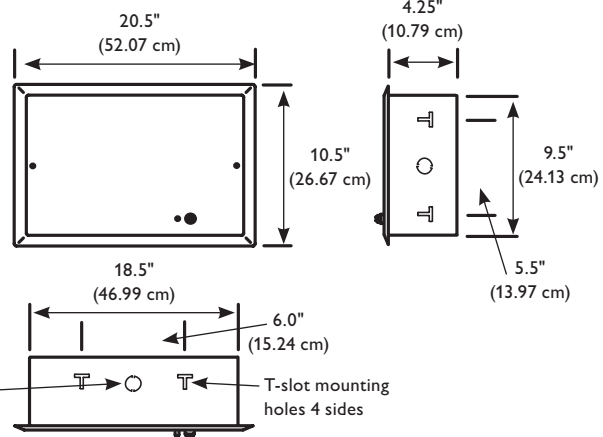
MODEL	OUTPUT VOLTS	WATTS FOR 1½ HRS	WATTS FOR 2 HRS	WATTS FOR 3 HRS	WATTS FOR 4 HRS	MOUNTING TYPE	WEIGHT (LBS.)
LMI100T	120/277	100	75	50	37	Ceiling Grid	37
LMI100R	120/277	100	75	50	37	Recessed	37
LMI100S	120/277	100	75	50	37	Surface	37
LMI250S*	120/277	250	185	115	87	Surface	89

* Available in surface mount only.

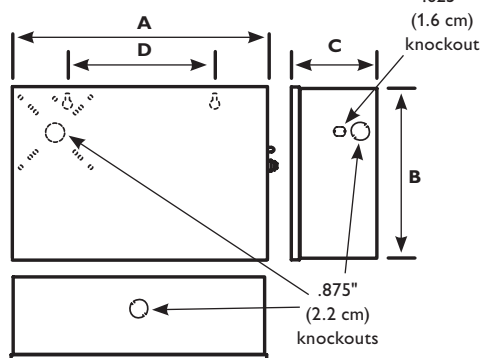
Ceiling Grid Model (T)



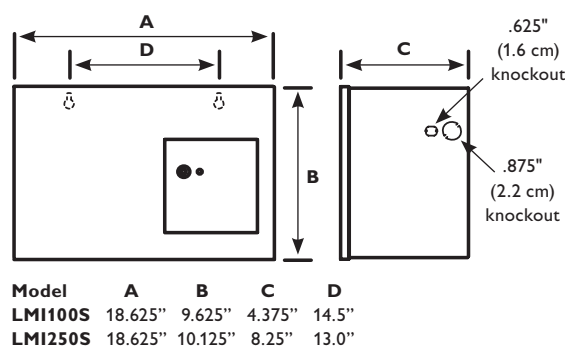
Recessed Model (R)



Surface Model (S) - 100 W



Surface Model (S) - 250 W



Model	A	B	C	D
LMI100S	18.625"	9.625"	4.375"	14.5"
LMI250S	18.625"	10.125"	8.25"	13.0"



Philips Lightolier
e: lol.webmaster@philips.com
t: (508) 679-8131
w: www.lightolier.com

LMI Series - 100 March 13, 2012

Specifications are subject to change without notice.
© Koninklijke Philips Electronics N.V., 2012. All rights reserved.

Job Information Type: