

1'x1' RECESSED DIRECT/INDIRECT FLUORESCENT,  
2 LAMP, TT5 BI-TUBE TRIPLE TUBE, 5" DEEP  
MICROPERFORATED MESH LAMP SHIELD, STATIC

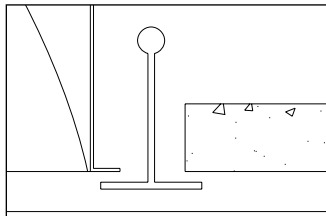
## Features

- Efficiency 40.0%.
- Dual swing down microperforated lamp shields separated by luminous strip for easy relamping and maintenance.
- Alter soft white film on inside of mesh conceals lamp image providing balance between reflected and direct light.
- Fully recessed luminaire and with two separate lamp compartments.
- 95% Reflective Alter soft white paint finish.
- Specular interior reflector (solid lamp shield only).
- One piece body for easy installation.
- Easy access to ballast through lamp compartment.
- Fits standard T-Grid ceilings.

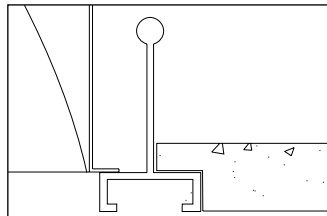


## Mounting Methods / Features

Ceiling compatibility

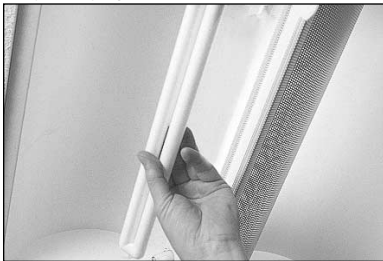


Suited to standard exposed  
T-grid ceilings

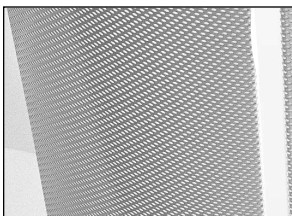


Suited to standard exposed  
Slot T-grid ceilings

Swing down optical system for  
easy relamping and maintenance



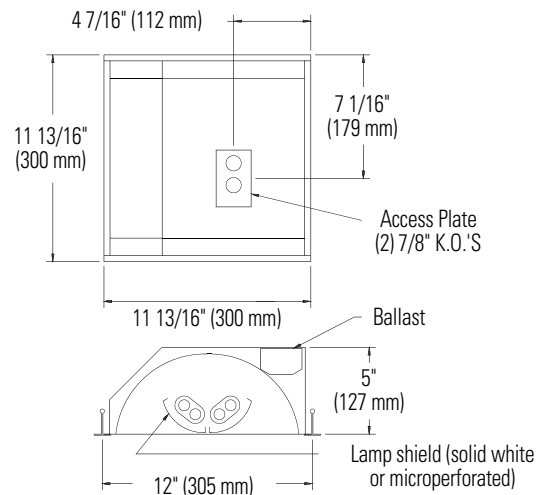
Microperforated mesh  
lamp shields



Also available with solid opaque swing-  
down lamp shield



## Dimensions



## Job Information

## Type:

**Job Name:**

**Cat. No.:**

**Lamp(s):**

**Volts/Ballast:**

**Lightolier** a Genlyte Thomas Company

[www.lightolier.com](http://www.lightolier.com)

Technical Information: (978) 657-7600 • Fax (978) 658-0595  
631 Airport Road, Fall River, MA 02720 • (508) 679-8131 • Fax (508) 674-4710

We reserve the right to change details of design, materials and finish.

© 2002 Genlyte Thomas Group LLC (Lightolier Division)

A0902

**Section 5 / Folio L40-10**

**LIGHTOLIER®**

# ALTER SOFT LIGHTS QVS1GPFOS2FT 2X18W

Page 2 of 2

1'x1' RECESSED DIRECT/INDIRECT FLUORESCENT,  
2 LAMP, TT5 BI-TUBE TRIPLE TUBE, 5" DEEP  
MICROPERFORATED MESH LAMP SHIELD, STATIC

## Photometry

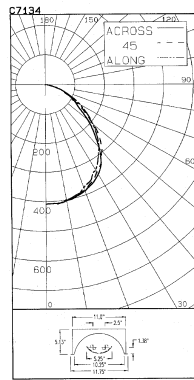


LIGHTING SCIENCES CANADA LTD.

440 Phillip St., Unit 19, Waterloo, Ont., Canada N2L 5P9  
Tel: (519) 746-3140 Fax: (519) 746-3166

CERTIFIED TEST REPORT NO. LSC7134  
COMPUTED BY LSC PROGRAM \*\*TEST-LITE\*\*

CFI ALTER 1x1 RECESSED INDIRECT FIXTURE CAT. NO. QVS1GPFOS218120SB  
WITH WHITE PAINTED INTERIOR AND PERFORATED LAMP SHIELDS WITH TRANSLUCENT LENSES  
TWO 18W BIAX COMPACT FLUORESCENT LAMPS. LUMEN RATING = 1250 LMS.  
MAGNETEK 120V 1 OR 2-LAMP ELECTRONIC TRIAD BALLAST NO. B2321120RH



| CANDLEPOWER SUMMARY |       | OUTPUT LUMENS |             |
|---------------------|-------|---------------|-------------|
| ANGLE               | ALONG | 45            | 67.5 ACROSS |
| 0                   | 409   | 409           | 409         |
| 5                   | 408   | 407           | 408         |
| 10                  | 399   | 402           | 404         |
| 15                  | 391   | 391           | 399         |
| 20                  | 374   | 379           | 384         |
| 25                  | 360   | 360           | 367         |
| 30                  | 337   | 339           | 345         |
| 35                  | 309   | 313           | 326         |
| 40                  | 280   | 285           | 295         |
| 45                  | 246   | 256           | 259         |
| 50                  | 208   | 217           | 211         |
| 55                  | 172   | 182           | 164         |
| 60                  | 136   | 140           | 120         |
| 65                  | 99    | 98            | 88          |
| 70                  | 67    | 64            | 62          |
| 75                  | 41    | 41            | 41          |
| 80                  | 19    | 22            | 20          |
| 85                  | 6     | 6             | 5           |
| 90                  | 0     | 0             | 0           |

### ZONAL LUMENS AND PERCENTAGES

| ZONE   | LUMENS | % LAMP | % LUMINAIRE |
|--------|--------|--------|-------------|
| 0-30   | 318    | 12.75  | 31.89       |
| 0-40   | 518    | 20.73  | 51.85       |
| 0-60   | 854    | 34.17  | 85.47       |
| 0-90   | 999    | 39.98  | 100.00      |
| 40-90  | 481    | 19.25  | 48.15       |
| 60-90  | 145    | 5.81   | 14.53       |
| 90-180 | 0      | .00    | .00         |
| 0-180  | 999    | 39.98  | 100.00      |

\*\* EFFICIENCY = 40.0% \*\*

LUMINANCE SUMMARY-CD. / SQ. M.

| ANGLE | ALONG | 45   | ACROSS |
|-------|-------|------|--------|
| 45    | 4775  | 5052 | 4517   |
| 55    | 4112  | 3956 | 3377   |
| 65    | 3221  | 2884 | 2963   |
| 75    | 2159  | 2182 | 2311   |
| 85    | 1021  | 937  | 1520   |

CERTIFIED BY:

DATE: NOV 4, 1997  
PREPARED FOR:  
CANADIAN FLUORESCENT INDUSTRIES  
CORNWALL, ONTARIO

TESTED ACCORDING TO IES PROCEDURES. TEST DISTANCE EXCEEDS FIVE TIMES THE GREATEST LUMINOUS OPENING OF LUMINAIRE.

LIGHTING SCIENCES CANADA LTD.

440 PHILLIP ST. UNIT 19  
WATERLOO, ONTARIO CANADA N2L 5P9

CERTIFIED TEST REPORT NO. LSC7134  
COMPUTED BY LSC PROGRAM \*\*TEST-LITE\*\*

CFI ALTER 1x1 RECESSED INDIRECT FIXTURE CAT. NO. QVS1GPFOS218120SB  
WITH WHITE PAINTED INTERIOR AND PERFORATED LAMP SHIELDS WITH TRANSLUCENT LENSES  
TWO 18W BIAX COMPACT FLUORESCENT LAMPS. LUMEN RATING = 1250 LMS.  
MAGNETEK 120V 1 OR 2-LAMP ELECTRONIC TRIAD BALLAST NO. B2321120RH

### COEFFICIENTS OF UTILIZATION

#### ZONAL CAVITY METHOD

EFFECTIVE FLOOR CAVITY REFLECTANCE = .20

| CC WALL | 80  | 70  | 50  | 30  | 10  | 0   |
|---------|-----|-----|-----|-----|-----|-----|
| 70      | 50  | 30  | 10  | 70  | 50  | 30  |
| 50      | 30  | 10  | 70  | 50  | 30  | 10  |
| 30      | 10  | 70  | 50  | 30  | 10  | 70  |
| 10      | 70  | 50  | 30  | 10  | 70  | 50  |
| 0       | 70  | 50  | 30  | 10  | 70  | 50  |
| RCR     | 0   | .48 | .48 | .48 | .46 | .46 |
| 1       | .44 | .43 | .41 | .40 | .43 | .42 |
| 2       | .41 | .38 | .36 | .34 | .40 | .37 |
| 3       | .38 | .34 | .31 | .29 | .37 | .34 |
| 4       | .35 | .31 | .28 | .26 | .34 | .30 |
| 5       | .32 | .28 | .25 | .22 | .32 | .27 |
| 6       | .30 | .25 | .22 | .20 | .29 | .25 |
| 7       | .28 | .23 | .19 | .17 | .27 | .22 |
| 8       | .26 | .21 | .17 | .15 | .25 | .20 |
| 9       | .24 | .19 | .16 | .13 | .23 | .19 |
| 10      | .22 | .17 | .14 | .12 | .22 | .17 |

DETERMINED IN ACCORDANCE WITH CURRENT IES PUBLISHED PROCEDURES  
LUMINAIRE INPUT WATTS = 27.9  
LABORATORY RESULT MAY NOT BE REPRESENTATIVE OF FIELD PERFORMANCE.  
BALLAST FACTORS HAVE NOT BEEN APPLIED.

## Ordering Information

Explanation of Catalog Number. Example: QVS1GPFOS2FT120BA

| QVS   | 1                    | G   | OS   | 2             | FT  |                                  |   |          |
|---|----------------------|---|--|---------------|---|----------------------------------|---|----------|
| QUALITY VISUAL STATIC<br>Recessed direct indirect soft light optical system | FIXTURE WIDTH:<br>1' | CEILING TYPE:<br>Standard exposed T-grid ceilings | LAMP SHIELD:<br>PF = Microperforated<br>SD = Solid | LAMP QUANTITY | LAMP/FIXTURE LENGTH:<br>FT = TT5<br>Bi-Tube | VOLTAGE:<br>120V<br>277V<br>347V | BALLAST:<br>BA = 18W Electronic TT5 RS<br>PA = 18W TT5 PowerSpec Dimming* | OPTIONS: |
|   |                      |   | OS = Open slot (no acrylic)                        |               |   |                                  | *Not available in 347V.   |          |

## Specifications

**MATERIALS:** One piece chassis constructed from die formed 20 gauge cold rolled steel. Reflectors - 95% reflectance baked white acrylic matte paint finish. Specular interior reflector (solid lamp shield only). Soft white acrylic film on inside of lamp shield conceals lamp image.

**FINISH:** Chassis exterior - phosphate undercoating, baked white acrylic matte high reflectance paint finish.

**ELECTRICAL:** Rapid start HPF, thermally protected class "P" ballast (Bi-tube type).

If K.O.s are within 3" of ballast use wire suitable for at least 90C.

**LABELS:** Listed by



## Job Information

## Type:

Lightolier a Genlyte Thomas Company

www.lightolier.com

Technical Information: (978) 657-7600 • Fax (978) 658-0595

631 Airport Road, Fall River, MA 02720 • (508) 679-8131 • Fax (508) 674-4710

We reserve the right to change details of design, materials and finish.

© 2002 Genlyte Thomas Group LLC (Lightolier Division)

A0902

Section 5 / Folio L40-10

LIGHTOLIER®