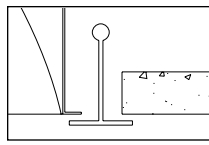
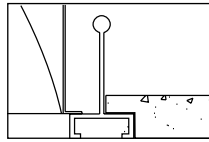


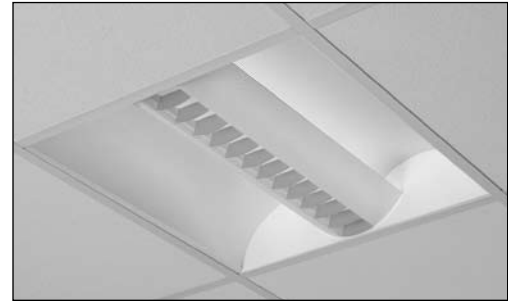
Ceiling compatibility



Suited to standard exposed T-grid ceilings



Suited to standard exposed Slot T-grid ceilings



Ordering information

QVS	2	G	PT						
Quality Visual Static	Luminaire Width	Ceiling Type	Lamp Shield		Lamp Quantity	Lamp	Voltage	Ballast Type	Options
Recessed direct indirect soft light optical system	2'	G = Standard exposed T-grid ceilings	PT = Metallic Reflector / Micro-perforated mesh lamp shield		1 = 1 Lamp 2 = 2 Lamp 3 = 3 Lamp	24 = 24WT5HO 17 = 17WT8 FT = TT5 Bi-Tube	UNV 120 277 347	T5/T5HO PG = Electronic Linear T5/T5HO Program Start (<10% THD) T8 S0 = Electronic T8 Instant Start (<20% THD) RO = Electronic T8 Rapid Start (<10% THD) HI = Electronic T8 Instant Start (<10% THD) O3 = 3 Lamp Electronic T8 Instant Start (<20% THD) H3 = 3 Lamp Electronic T8 Instant Start (<10% THD) TT5 SB = 40W Electronic TT5 Instant Start or Rapid Start (<20% THD) BE = 50W Electronic TT5 Rapid Start (<20% THD) BF = 55W Electronic TT5 Rapid Start (<10% THD)	F = Internal Fusing (Canada) GLR = Internal Fusing (USA) FK92X2 = Drywall Kit for plaster frames EM = T8/TT5/T5/T5HO Emergency Lighting System (USA) O = T8/TT5 Emergency Lighting System (Canada) E = T5/T5HO Emergency Lighting System (Canada) R = Radio Interface Filter QVS-HD = Alter Hold Down Clips (Std 15/16" only) QVS22DG = 2'x2' Dust and Germ Guard
				Lamp Shield Details LV = White perforated flat blade louver LG = Grey solid flat blade louver LW = White solid flat blade louver					
For Dimming Ballast Suffix, please consult your Lightolier Representative.									

Features

- Efficiency 43.9%
- Semi-specular aluminum reflectors with lengthwise ridges
- Flat blade louver with lens overlay and perforated curved side blades
- Alter soft white film on inside of mesh conceals lamp image providing balance between reflected and direct light
- Fully recessed luminaire and lamp compartment
- 95% Reflective Alter soft white paint finish
- One piece body for easy installation
- Easy access to ballast through lamp compartment
- Fits standard T-Grid or drywall ceilings
- Choice of white microperforated blade, white solid blade or grey solid blade

Material

One piece chassis constructed from die formed 20 gauge cold rolled steel.
Reflectors - 95% reflectance baked white acrylic matte paint finish. Soft white acrylic film on inside of lamp shield conceals lamp image.

Finish

Chassis exterior - phosphate undercoating, baked white acrylic matte high reflectance paint finish.

Electrical

Rapid start HPF, thermally protected class "P" ballast. If K.O.s are within 3" of ballast use wire suitable for at least 90C. Suitable for damp location.

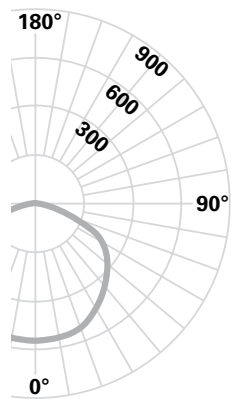
Labels

Listed by CSA, UL.

Job Information	Type:
Job Name:	
Cat. No.:	
Lamp(s):	
Notes:	

Performance

CANDLEPOWER CURVE 224



CANDLEPOWER

ZONE DEG	CANDLEPOWER				
	ALONG	22.5	45	67.5	ACROSS
0	578	578	578	578	578
5	573	572	575	577	576
10	558	562	566	570	571
15	539	544	554	563	566
20	509	515	535	548	556
25	471	481	510	530	535
30	428	444	477	503	510
35	387	402	441	470	484
40	341	358	399	440	454
45	291	315	357	403	427
50	244	268	314	370	400
55	199	222	272	338	367
60	165	181	231	294	324
65	133	146	190	240	260
70	104	111	146	170	164
75	77	76	89	90	98
80	48	45	43	52	56
85	16	17	15	19	18
90	0	0	0	0	0

REPORT NO: LSCA814
 CAT. NO: QVS2GPTLV224UNVPG
 2 24W T5HO Fluorescent Lamps at 1760 lumens.
 Efficiency: 43.9%
 Candela at Nadir: 578cd

COEFFICIENTS OF UTILIZATION

ZONAL CAVITY METHOD * EFFECTIVE FLOOR CAVITY REFLECTANCE = .20

Room Cavity Ratio	Wall Reflectance											
	80				70				50			
	70	50	30	10	70	50	30	10	50	30	10	
0	.52	.52	.52	.52	.51	.51	.51	.51	.49	.49	.49	
1	.48	.46	.45	.43	.47	.45	.44	.42	.43	.42	.41	
2	.44	.41	.38	.36	.43	.40	.38	.35	.38	.36	.35	
3	.41	.36	.33	.30	.40	.36	.33	.30	.34	.32	.30	
4	.37	.32	.29	.26	.36	.32	.28	.26	.31	.28	.25	
5	.34	.29	.25	.22	.33	.28	.24	.22	.27	.24	.22	
6	.31	.26	.22	.19	.31	.25	.22	.19	.24	.21	.19	
7	.29	.23	.19	.17	.28	.23	.19	.17	.22	.19	.16	
8	.27	.21	.17	.14	.26	.20	.17	.14	.20	.17	.14	
9	.25	.19	.15	.12	.24	.18	.15	.12	.18	.15	.12	
10	.23	.17	.13	.11	.22	.17	.13	.11	.16	.13	.11	

DETERMINED IN ACCORDANCE WITH CURRENT IES PUBLISHED PROCEDURES
 LUMINAIRE INPUT WATTS = 51.2

DISTRIBUTION

ZONE	LUMENS	% LAMP	%LUMINAIRE
0-30	443	12.60	28.69
0-40	716	20.34	46.34
0-60	1241	35.27	80.35
0-90	1545	43.90	100.00
40-90	829	23.55	53.66
60-90	303	8.63	19.65
90-180	0	.00	.00
0-180	1545	43.90	100.00

Job Information	Type:
------------------------	--------------