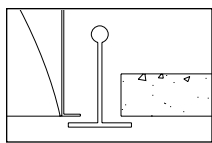
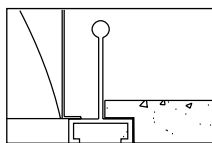


Ceiling compatibility



Suited to standard exposed T-grid ceilings



Suited to standard exposed Slot T-grid ceilings



## Ordering information

QVS	2	G	PT						
Quality Visual Static	Luminaire Width	Ceiling Type	Lamp Shield		Lamp Quantity	Lamp	Voltage	Ballast Type	Options
Recessed direct indirect soft light optical system	2'	G = Standard exposed T-grid ceilings	PT = Metallic Reflector/ Micro-perforated mesh lamp shield		1 = 1 Lamp 2 = 2 Lamp 3 = 3 Lamp	24 = 24WT5HO 17 = 17WT8 FT = TT5 Bi-Tube	UNV 120 277 347	<b>T5/T5HO</b> PG = Electronic Linear T5/T5HO Program Start (<10% THD) <b>T8</b> SO = Electronic T8 Instant Start (<20% THD) RO = Electronic T8 Rapid Start (<10% THD) HI = Electronic T8 Instant Start (<10% THD) O3 = 3 Lamp Electronic T8 Instant Start (<20% THD) H3 = 3 Lamp Electronic T8 Instant Start (<10% THD) <b>TT5</b> SB = 40W Electronic TT5 Instant Start or Rapid Start (<20% THD) BE = 50W Electronic TT5 Rapid Start (<20% THD) <b>For Dimming Ballast Suffix, please consult your Lightolier Representative.</b>	F = Internal Fusing (Canada) GLR = Internal Fusing (USA) FK92X2 = Drywall Kit for plaster frames EM = T8/TT5/T5/T5HO Emergency Lighting System (USA) O = T8/TT5 Emergency Lighting System (Canada) E = T5/T5HO Emergency Lighting System (Canada) QVS-HD = Alter Hold Down Clips (Std 15/16" only) QVS22DG = 2' x 2' Dust and Germ Guard
			<b>Clear Polished Acrylic Drop Down Visual Element</b> OS = Open slot (no acrylic) lamp shield OP = One piece (no center slot) lamp shield GC = Clear acrylic GG = Clear acrylic / Green projected color face GB = Clear acrylic / Blue projected color face GR = Clear acrylic / Red projected color face						

## Features

- Efficiency 40.7%
- Swing down microperforated lamp shield for easy relamping and maintenance
- Semi-specular aluminum reflectors with lengthwise ridges
- Alter soft white film on inside of mesh conceals lamp image providing balance between reflected and direct light
- Fully recessed luminaire and lamp compartment
- 95% Reflective Alter soft white paint finish
- One piece body for easy installation
- Easy access to ballast through lamp compartment
- Fits standard T-Grid or drywall ceilings
- Optional acrylic drop-down visual element

## Material

One piece chassis constructed from die formed 20 gauge cold rolled steel.  
**Reflectors** - 95% reflectance baked white acrylic matte paint finish. Soft white acrylic film on inside of lamp shield conceals lamp image.

## Finish

**Chassis exterior** - phosphate undercoating, baked white acrylic matte high reflectance paint finish.

## Electrical

Thermally protected class "P" ballast. If K.O.s are within 3" of ballast use wire suitable for at least 90C. Suitable for damp location.

## Labels

Listed by CSA, UL.

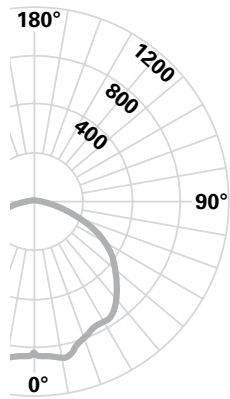
Job Information	Type:
<b>Job Name:</b>	
<b>Cat. No.:</b>	
<b>Lamp(s):</b>	
<b>Notes:</b>	

**Lightolier** [www.lightolier.com](http://www.lightolier.com)  
 631 Airport Road, Fall River, MA 02720 • (508) 679-8131 • Fax (508) 674-4710  
 We reserve the right to change details of design, materials and finish.  
 © 2008 Philips Group • **QVS2x2PTOS.pdf**

**Canlyte** [www.canlyte.com](http://www.canlyte.com)  
 3015 Louis-Amos, Lachine, Québec H8T 1C4 • (514) 636-0670 • (514) 636-0460

## Performance

### CANDLEPOWER CURVE 2FT



ZONE DEG	CANDLEPOWER				
	ALONG	22.5	45	67.5	ACROSS
0	939	939	939	939	939
5	941	950	954	959	962
10	916	946	959	985	984
15	882	929	964	967	953
20	840	880	923	897	903
25	782	841	836	862	870
30	709	768	773	832	864
35	632	698	722	825	851
40	557	591	691	775	793
45	483	515	639	700	727
50	398	438	554	621	653
55	330	373	464	554	587
60	270	314	384	463	505
65	213	240	302	369	397
70	167	187	233	253	254
75	121	123	130	138	160
80	75	61	62	81	86
85	22	14	13	25	29
90	0	0	0	0	0

REPORT NO: LSC9522  
 CAT. NO: QVS2GPTOS2FT120SB  
 2 40W TT5 Compact Fluorescent Lamps at 3150 lumens.  
 Efficiency: 40.7%  
 Candela at Nadir: 939cd

### COEFFICIENTS OF UTILIZATION

ZONAL CAVITY METHOD \* EFFECTIVE FLOOR CAVITY REFLECTANCE = .20

Room Cavity Ratio	Wall Reflectance											
	80				70				50			
	70	50	30	10	70	50	30	10	50	30	10	
0	.48	.48	.48	.48	.47	.47	.47	.47	.45	.45	.45	
1	.45	.43	.42	.40	.44	.42	.41	.40	.40	.39	.38	
2	.41	.38	.36	.34	.40	.38	.35	.33	.36	.34	.33	
3	.38	.34	.31	.29	.37	.33	.31	.28	.32	.30	.28	
4	.35	.31	.27	.25	.34	.30	.27	.25	.29	.26	.24	
5	.32	.27	.24	.21	.31	.27	.24	.21	.26	.23	.21	
6	.30	.25	.21	.19	.29	.24	.21	.19	.23	.21	.18	
7	.27	.22	.19	.16	.27	.22	.18	.16	.21	.18	.16	
8	.25	.20	.17	.14	.25	.20	.17	.14	.19	.16	.14	
9	.24	.18	.15	.13	.23	.18	.15	.13	.17	.15	.13	
10	.22	.17	.13	.11	.21	.16	.13	.11	.16	.13	.11	

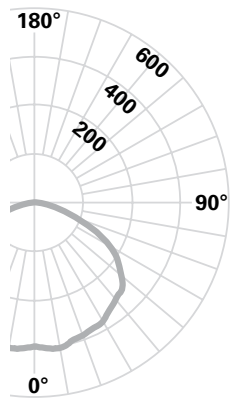
DETERMINED IN ACCORDANCE WITH CURRENT IES PUBLISHED PROCEDURES  
 LUMINAIRE INPUT WATTS = 65.0

### DISTRIBUTION

ZONE	LUMENS	% LAMP	% LUMINAIRE
0-30	744	11.81	29.01
0-40	1208	19.19	47.11
0-60	2091	33.20	81.51
0-90	2565	40.73	100.00
40-90	1357	21.54	52.89
60-90	474	7.53	18.49
90-180	0	.00	.00
0-180	2565	40.73	100.00

## Performance

### CANDLEPOWER CURVE 217



ZONE DEG	CANDLEPOWER				
	ALONG	22.5	45	67.5	ACROSS
0	401	401	401	401	401
5	400	404	408	409	409
10	392	399	409	410	412
15	377	389	399	400	400
20	358	373	380	388	394
25	331	351	361	378	386
30	305	322	345	371	382
35	274	289	321	355	365
40	244	260	302	339	353
45	208	229	271	319	345
50	175	200	246	301	317
55	146	172	226	267	284
60	120	143	192	230	239
65	93	118	154	180	182
70	75	93	115	121	115
75	55	65	67	69	74
80	37	37	36	39	40
85	15	17	12	14	12
90	0	0	0	0	0

REPORT NO: LSCD068  
 CAT. NO: QVS2GPTOS217120SO  
 2 F17T8/TL841 17W T8 Fluorescent Lamps at 1400 lumens.  
 Efficiency: 41.4%  
 Candela at Nadir: 401cd

### COEFFICIENTS OF UTILIZATION

ZONAL CAVITY METHOD \* EFFECTIVE FLOOR CAVITY REFLECTANCE = .20

Room Cavity Ratio	Wall Reflectance											
	80				70				50			
	70	50	30	10	70	50	30	10	50	30	10	
0	.49	.49	.49	.49	.48	.48	.48	.48	.46	.46	.46	
1	.45	.44	.42	.41	.44	.43	.41	.40	.41	.40	.39	
2	.42	.38	.36	.34	.41	.38	.35	.33	.36	.34	.32	
3	.38	.34	.31	.28	.37	.33	.30	.28	.32	.30	.28	
4	.35	.30	.27	.24	.34	.30	.27	.24	.29	.26	.24	
5	.32	.27	.23	.20	.31	.26	.23	.20	.25	.22	.20	
6	.29	.24	.20	.18	.29	.23	.20	.18	.23	.20	.17	
7	.27	.21	.18	.15	.26	.21	.18	.15	.20	.17	.15	
8	.25	.19	.16	.13	.24	.19	.16	.13	.18	.15	.13	
9	.23	.17	.14	.11	.22	.17	.14	.11	.16	.13	.11	
10	.21	.16	.12	.10	.21	.15	.12	.10	.15	.12	.10	

DETERMINED IN ACCORDANCE WITH CURRENT IES PUBLISHED PROCEDURES  
 LUMINAIRE INPUT WATTS = 34.7

### DISTRIBUTION

ZONE	LUMENS	% LAMP	% LUMINAIRE
0-30	317	11.33	27.34
0-40	518	18.51	44.67
0-60	925	33.06	79.79
0-90	1160	41.43	100.00
40-90	641	22.92	55.33
60-90	234	8.37	20.21
90-180	0	.00	.00
0-180	1160	41.43	100.00

## Job Information Type:

**Lightolier** [www.lightolier.com](http://www.lightolier.com)  
 631 Airport Road, Fall River, MA 02720 • (508) 679-8131 • Fax (508) 674-4710  
 We reserve the right to change details of design, materials and finish.  
 © 2008 Philips Group • QVS2x2PTOS.pdf

**Canlyte** [www.canlyte.com](http://www.canlyte.com)  
 3015 Louis-Amos, Lachine, Québec H8T 1C4 • (514) 636-0670 • (514) 636-0460