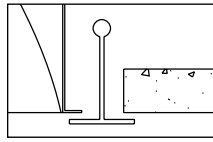
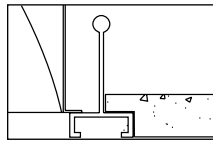


Ceiling compatibility



Suited to standard exposed T-grid ceilings



Suited to standard exposed Slot T-grid ceilings



## Ordering information

QVS	2	G	OL	OP					
Quality Visual Static	Luminaire Width	Ceiling Type	Lamp Shield		Lamp Quantity	Lamp	Voltage	Ballast Type	Options
Recessed direct indirect soft light optical system	2'	G = Standard exposed T-grid ceilings	OL = Curved Soft White Opal Lens		2 = 2 Lamp 3 = 3 Lamp	28 = 28WT5 54 = 54WT5HO 32 = 32WT8	UNV 120 277 347	<b>T5/T5HO</b> PG = Electronic Linear T5/T5HO Program Start (<10% THD)  <b>T8</b> SO = Electronic T8 Instant Start (<20% THD) RO = Electronic T8 Rapid Start (<10% THD) HI = Electronic T8 Instant Start (<10% THD) O3 = 3 Lamp Electronic T8 Instant Start (<20% THD) H3 = 3 Lamp Electronic T8 Instant Start (<10% THD)	F = Internal Fusing (Canada) GLR = Internal Fusing (USA) FK92X4 = Drywall Kit for Plaster Frames  EM = T8/T5/T5HO Emergency Lighting System (USA) O = T8 Emergency Lighting System (Canada) E = T5/T5HO Emergency Lighting System (Canada) QVS-HD = Alter Hold Down Clips (Std 15/16" only) QVS24DG = 2'x4' Dust and Germ Guard
				<b>Lamp Shield Details</b>					
				OP = One piece (no center slot) lampshield					

## Features

- Efficiency 80.2%
- Seamless welded form: curved top and side reflectors are formed together without any gaps or visual barriers
- Swing down microperforated lamp shield for easy relamping and maintenance
- Soft white opal lens conceals lamp image and provide balance between reflected light and direct light
- Fully recessed luminaire and lamp compartment
- 95% Reflective Alter soft white paint finish
- One piece body for easy installation
- Easy access to ballast through lamp compartment
- Fits standard T-Grid or drywall ceilings

## Material

One piece chassis constructed from die formed 20 gauge cold rolled steel.  
**Reflectors** - 95% reflectance baked white acrylic matte paint finish. Soft white acrylic film on inside of lamp shield conceals lamp image.

## Finish

**Chassis exterior** - phosphate undercoating, baked white acrylic matte high reflectance paint finish.

## Electrical

Thermally protected class "P" ballast. If K.O.s are within 3" of ballast use wire suitable for at least 90C. Suitable for damp location.

## Labels

Listed by CSA, UL.

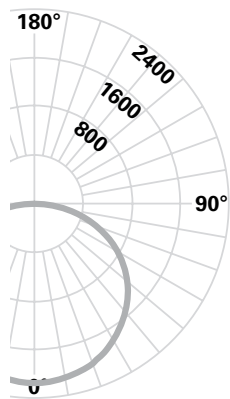
Job Information	Type:
<b>Job Name:</b>	
<b>Cat. No.:</b>	
<b>Lamp(s):</b>	
<b>Notes:</b>	

**Lightolier** [www.lightolier.com](http://www.lightolier.com)  
 631 Airport Road, Fall River, MA 02720 • (508) 679-8131 • Fax (508) 674-4710  
 We reserve the right to change details of design, materials and finish.  
 © 2008 Philips Group • [QVS2x4OPL.pdf](#)

**Canlyte** [www.canlyte.com](http://www.canlyte.com)  
 3015 Louis-Amos, Lachine, Québec H8T 1C4 • (514) 636-0670 • (514) 636-0460

### Performance

#### CANDLEPOWER CURVE 332



ZONE DEG	CANDLEPOWER				
	ALONG	22.5	45	67.5	ACROSS
0	2283	2283	2283	2283	2283
5	2273	2274	2277	2274	2273
10	2248	2253	2264	2252	2249
15	2197	2204	2228	2231	2223
20	2134	2147	2157	2169	2170
25	2052	2058	2077	2089	2101
30	1953	1961	1985	2009	2010
35	1832	1849	1883	1913	1913
40	1701	1722	1764	1795	1804
45	1551	1582	1623	1665	1680
50	1381	1411	1476	1518	1540
55	1212	1243	1324	1374	1394
60	1021	1067	1154	1210	1229
65	836	895	979	1042	1049
70	644	706	796	827	817
75	450	524	587	597	604
80	266	330	370	392	391
85	107	140	151	150	142
90	0	0	0	0	0

REPORT NO: LSCB029  
 CAT. NO: QVS2GOL0P33212003  
 3 32W T8 Fluorescent Lamps at 2950 lumens.  
 Efficiency: 80.2%  
 Candela at Nadir: 2283cd

#### COEFFICIENTS OF UTILIZATION

ZONAL CAVITY METHOD \* EFFECTIVE FLOOR CAVITY REFLECTANCE = .20

Room Cavity Ratio	Wall Reflectance											
	80				70				50			
	70	50	30	10	70	50	30	10	50	30	10	
0	.95	.95	.95	.95	.93	.93	.93	.93	.89	.89	.89	
1	.87	.84	.80	.77	.85	.82	.79	.76	.78	.76	.74	
2	.79	.73	.68	.63	.78	.72	.67	.62	.69	.65	.61	
3	.73	.64	.58	.53	.71	.63	.57	.52	.61	.56	.51	
4	.67	.57	.50	.45	.65	.56	.50	.44	.54	.48	.44	
5	.61	.50	.43	.38	.59	.49	.42	.37	.48	.41	.37	
6	.56	.45	.38	.32	.54	.44	.37	.32	.43	.36	.32	
7	.51	.40	.33	.28	.50	.40	.33	.28	.38	.32	.28	
8	.47	.36	.29	.24	.46	.35	.29	.24	.34	.28	.24	
9	.43	.32	.26	.21	.42	.32	.25	.21	.31	.25	.21	
10	.40	.29	.23	.18	.39	.29	.23	.18	.28	.22	.18	

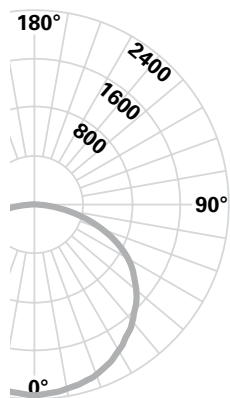
DETERMINED IN ACCORDANCE WITH CURRENT IES PUBLISHED PROCEDURES  
 LUMINAIRE INPUT WATTS = 86.9

#### DISTRIBUTION

ZONE	LUMENS	% LAMP	% LUMINAIRE
0-30	1800	20.34	25.38
0-40	2974	33.61	41.93
0-60	5393	60.94	76.03
0-90	7094	80.16	100.00
40-90	4119	46.55	58.07
60-90	1700	19.22	23.97
90-180	0	.00	.00
0-180	7094	80.16	100.00

### Performance

#### CANDLEPOWER CURVE 254



ZONE DEG	CANDLEPOWER				
	ALONG	22.5	45	67.5	ACROSS
0	2335	2335	2335	2335	2335
5	2334	2334	2334	2322	2322
10	2307	2313	2319	2311	2298
15	2264	2275	2286	2277	2270
20	2195	2202	2209	2215	2228
25	2112	2120	2134	2142	2162
30	2017	2025	2047	2069	2071
35	1893	1924	1945	1981	1977
40	1755	1792	1832	1870	1881
45	1606	1638	1695	1740	1765
50	1443	1476	1535	1604	1637
55	1265	1312	1396	1451	1489
60	1074	1135	1222	1290	1330
65	879	948	1047	1101	1124
70	689	750	860	882	882
75	467	553	625	625	631
80	284	362	376	393	384
85	107	154	148	146	132
90	0	0	0	0	0

REPORT NO: LSCD065  
 CAT. NO: QVS2GOL0P254UNVPG  
 2 54W T5HO Fluorescent Lamps at 4450 lumens.  
 Efficiency: 83.1%  
 Candela at Nadir: 2335cd

#### COEFFICIENTS OF UTILIZATION

ZONAL CAVITY METHOD \* EFFECTIVE FLOOR CAVITY REFLECTANCE = .20

Room Cavity Ratio	Wall Reflectance											
	80				70				50			
	70	50	30	10	70	50	30	10	50	30	10	
0	.99	.99	.99	.99	.97	.97	.97	.97	.92	.92	.92	
1	.91	.87	.83	.80	.88	.85	.82	.79	.81	.79	.76	
2	.82	.76	.70	.65	.80	.74	.69	.64	.71	.67	.63	
3	.75	.66	.60	.55	.73	.65	.59	.54	.63	.58	.53	
4	.69	.59	.52	.46	.67	.58	.51	.46	.56	.50	.45	
5	.63	.52	.44	.39	.61	.51	.44	.38	.49	.43	.38	
6	.58	.46	.39	.33	.56	.45	.38	.33	.44	.38	.33	
7	.53	.41	.34	.29	.52	.41	.34	.29	.39	.33	.29	
8	.49	.37	.30	.25	.47	.36	.30	.25	.35	.29	.25	
9	.45	.33	.26	.21	.44	.33	.26	.21	.32	.26	.21	
10	.42	.30	.23	.19	.41	.30	.23	.19	.29	.23	.19	

DETERMINED IN ACCORDANCE WITH CURRENT IES PUBLISHED PROCEDURES  
 LUMINAIRE INPUT WATTS = 117.0

#### DISTRIBUTION

ZONE	LUMENS	% LAMP	% LUMINAIRE
0-30	1849	20.78	25.02
0-40	3063	34.42	41.43
0-60	5598	62.91	75.72
0-90	7393	83.08	100.00
40-90	4330	48.65	58.57
60-90	1795	20.17	24.28
90-180	0	.00	.00
0-180	7393	83.08	100.00

### Job Information Type:

**Lightolier** [www.lightolier.com](http://www.lightolier.com)  
 631 Airport Road, Fall River, MA 02720 • (508) 679-8131 • Fax (508) 674-4710  
 We reserve the right to change details of design, materials and finish.  
 © 2008 Philips Group • QVS2x4OPL.pdf

**Canlyte** [www.canlyte.com](http://www.canlyte.com)  
 3015 Louis-Amos, Lachine, Québec H8T 1C4 • (514) 636-0670 • (514) 636-0460